

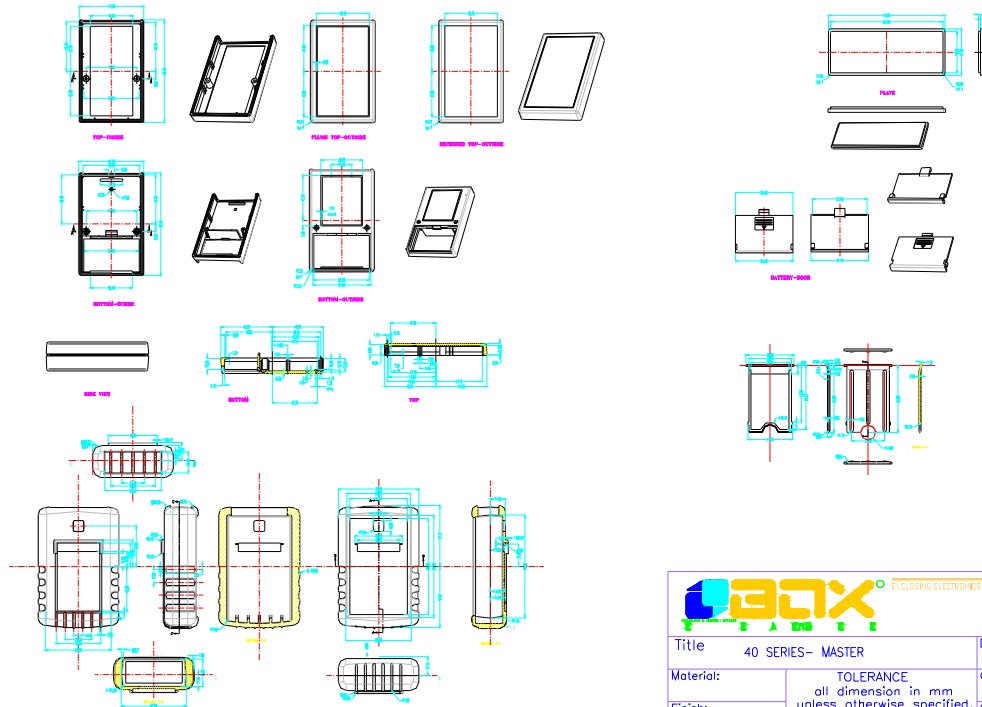


ENCLOSING ELECTRONICS ONE BOX AT A TIME


BOX ENCLOSURES, INC

28835 N. HERKY DRIVE, #114,
LAKE BLUFF, IL 60044

TEL: 847-932-4700 WWW.BOXENCLOSURES.COM FAX: 847-932-4701



THIS DRAWING IS THE PROPERTY OF AND MAY CONTAIN PROPRIETARY INFORMATION OWNED BY BOX[®] Enclosures. If it is provided under a CONFIDENTIAL RELATIONSHIP FOR A SPECIFIC PURPOSE, THE RECIPIENT AGREES TO USE IT ONLY FOR SUCH PURPOSE AND RETURN IT TO BOX[®] ENCLOSURES UPON REQUEST.

 ENCLOSING ELECTRONICS ONE BOX AT A TIME		Revision:	
		Model:	
Title	40 SERIES- MASTER	Dwg. No.:	Part No.:
Material:	TOLERANCE all dimension in mm unless otherwise specified. x ±0.20 .x ±0.10 .xx ±0.05 ANGLE ±0.5°	Color:	Drn. Date H.P.K. 12-13-01
Finish:		Qty:	Chk. Date
Proj:		A1 Sheet 1 of 1	App. Date