

# MICRO SWITCH

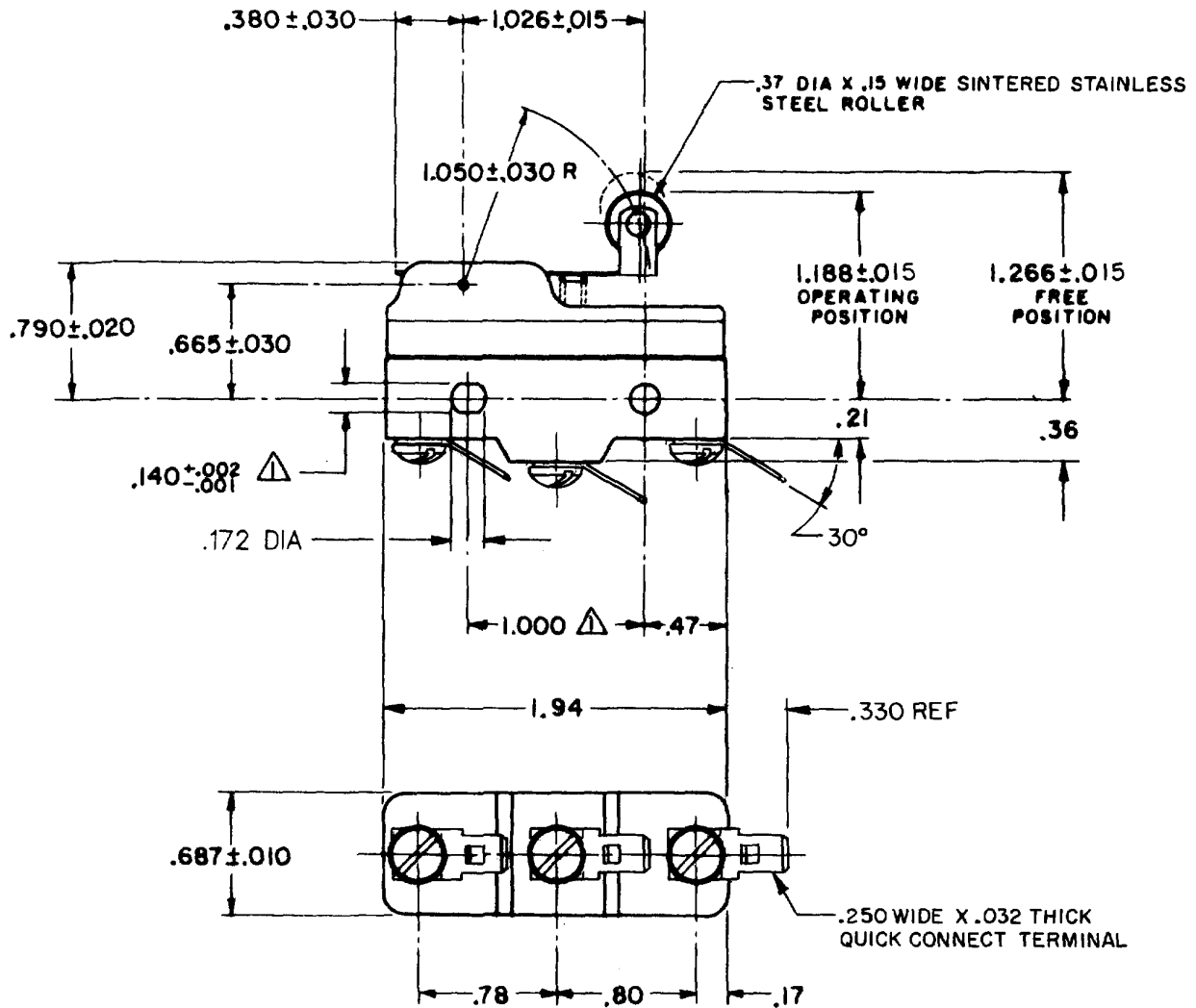
FREERPORT ILLINOIS, U.S.A  
A DIVISION OF HONEYWELL  
FED. MFG. CODE 91929

# SWITCH - BASIC

CATALOG LISTING  
**BZ-2RW822-D612**

APF2560

**M BZ-2RW822-D612**  
 DRAWING NUMBER  
 ISSUE 7  
 18 FEB 06  
 REVISIONS  
 A CO 82446  
 WJM 31 JAN 83  
 B CO 70184-H  
 G R T 2 JUN 92  
 C CO-175204B  
 DAW 1 FEB 94  
 D CO 77589  
 TSM 29 MAR 94  
 E C093346  
 DLT 2 SEP 98  
 F 0018449  
 TGP 18 FEB 06  
 RE R 19 JAN 72  
 DRAWN  
 FO-80378-1A  
 FORMTEK



**NOTE**  
 ▲ - MOUNTING HOLES WILL ACCEPT PINS OR SCREWS OF .139 MAX DIA ON 1.000 ± .002 CENTERS

THIS DRAWING COVERS A PROPRIETARY ITEM AND IS THE PROPERTY OF MICRO SWITCH. A DIVISION OF HONEYWELL. THIS DRAWING IS NOT TO BE COPIED OR USED WITHOUT THE APPROVAL OF MICRO SWITCH.

CHARACTERISTICS	ELECTRICAL DATA	SCALE FULL
OPERATING FORCE - - - - - 6 OZ MAX	CONTACT ARRANGEMENT S P D T	DO NOT SCALE PRINT
RELEASE FORCE - - - - - 1 1/2 OZ MIN	- L74 - 15A-125, 250, OR 480 VAC; 2A-600 VAC 1/8HP-125 VAC; 1/4HP-250 VAC 1/2A-125 VDC; 1/4A-250 VDC	UNLESS OTHERWISE NOTED DIMENSIONS ARE IN INCHES
DIFFERENTIAL TRAVEL - - - .003 - .020	- L288 -	<b>TOLERANCES ARE:</b>
OVERTRAVEL - - - - - .094 MIN	- L306 -	ONE PLACE (.0) ± .030
	- L315 -	TWO PLACE (.00) ± .015
	16A 250V ~ T85 5E4	THREE PLACE (.000) ± .005
		ANGLES ± 5°
		WEIGHT .076 LB