

# Inductive Sensors



Housing Style	Part Number	ID Number	Features	Sensing Range (mm)	Output	
<b>18 mm - Embeddable, eurofast® Connection</b> 	Bi 8U-EM18-AN6X-H1141	M1644738	<i>Uprox+</i> , Stainless steel	8	3-Wire DC NPN	
	Bi 8U-EM18WD-AN6X-H1141	M1634839	<i>Uprox+</i> , Washdown	8		
	Bi 8U-M18-AN6X-H1141	M1644737	<i>Uprox+</i>	8		
	Bi 8U-MT18-AN6X-H1141	M1644739	<i>Uprox+</i> , Teflon	8		
		Bi 8U-EM18-AP6X-H1141	M1644734	<i>Uprox+</i> , Stainless steel	8	3-Wire DC PNP
		Bi 8U-EM18WD-AP6X-H1141	M1634816	<i>Uprox+</i> , Washdown	8	
		Bi 8U-M18-AP6X-H1141	M1644731	<i>Uprox+</i>	8	
		Bi 8U-MT18-AP6X-H1141	M1644730	<i>Uprox+</i> , Teflon	8	
		Bi 8U-MT18M-AP6X2-H1141*	M1644740	<i>Uprox+</i> , Dual LED's	8	
		Ni 15U-EM18-AN6X-H1141	M1635336	<i>Uprox+</i> , Stainless steel	15	
Ni 15U-EM18WD-AN6X-H1141	M1634835	<i>Uprox+</i> , Washdown	15			
Ni 15U-M18-AN6X-H1141	M1635335	<i>Uprox+</i>	15			
Ni 15U-MT18-AN6X-H1141	M1635337	<i>Uprox+</i> , Teflon	15			
<b>18 mm - Embeddable, eurofast Connection</b> 	Ni 15U-EM18-AP6X-H1141	M1635332	<i>Uprox+</i> , Stainless steel	15	3-Wire DC PNP	
	Ni 15U-EM18WD-AP6X-H1141	M1634818	<i>Uprox+</i> , Washdown	15		
	Ni 15U-M18-AP6X-H1141	M1635331	<i>Uprox+</i>	15		
	Ni 15U-MT18-AP6X-H1141	M1635333	<i>Uprox+</i> , Teflon	15		
	Ni 15U-MT18M-AP6X2-H1141*	M1635338	<i>Uprox+</i> , Dual LED's	15		
	Bi 8U-EM18E-AP6X-H1141	M1634865	<i>Uprox+</i> , Stainless steel	8	3-Wire DC PNP	
	Bi 8U-M18M-VP44X-H1141	M1634877	<i>Uprox+</i>	8	4-Wire DC PNP	

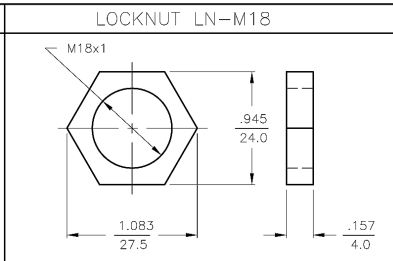
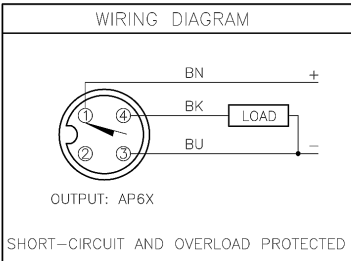
\* MT18M = Barrel length 62 mm.



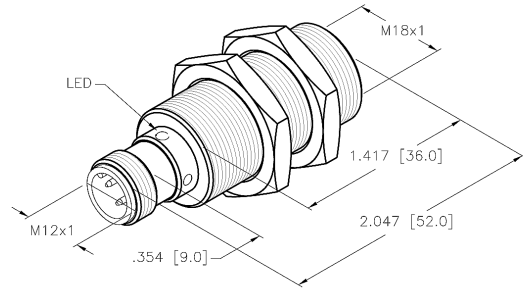
Voltage	Switching Freq. (Hz)	Operating Current (mA)	Operating Temp. (°C)	Protection	Housing	Face	Power LED	Output LED	Mating Cordset	Wiring Diagram #	Wiring Diagrams
10-30 VDC	1500	≤200	-25 to +75	IP 68	SS	LCP	N/A	YE	RK 4T-*	1	<div style="border: 1px solid black; padding: 5px; margin-bottom: 5px;"> <b>Diagram 1</b> </div> <div style="border: 1px solid black; padding: 5px; margin-bottom: 5px;"> <b>Diagram 2</b> </div> <div style="border: 1px solid black; padding: 5px;"> <b>Diagram 3</b> </div>
	1500	≤200	0 to +85	IP 68, 69K	SS	LCP	N/A	YE	RK 4T-*	1	
	1500	≤200	-25 to +75	IP 68	CPB	LCP	N/A	YE	RK 4T-*	1	
	1500	≤200	-25 to +75	IP 68	TC	LCP	N/A	YE	RK 4T-*	1	
10-30 VDC	1500	≤200	-25 to +75	IP 68	SS	LCP	N/A	YE	RK 4T-*	2	
	1500	≤200	0 to +85	IP 68, 69K	SS	LCP	N/A	YE	RK 4T-*	2	
	1500	≤200	-25 to +75	IP 68	CPB	LCP	N/A	YE	RK 4T-*	2	
	1500	≤200	-25 to +75	IP 68	TC	LCP	N/A	YE	RK 4T-*	2	
	1500	≤200	-25 to +75	IP 68	TC	LCP	GN	YE	RK 4T-*	2	
10-30 VDC	1000	≤200	-25 to +75	IP 68	SS	LCP	N/A	YE	RK 4T-*	1	
	1000	≤200	0 to +85	IP 68, 69K	SS	LCP	N/A	YE	RK 4T-*	1	
	1000	≤200	-25 to +75	IP 68	CPB	LCP	N/A	YE	RK 4T-*	1	
	1000	≤200	-25 to +75	IP 68	TC	LCP	N/A	YE	RK 4T-*	1	
10-30 VDC	1000	≤200	-25 to +75	IP 68	SS	LCP	N/A	YE	RK 4T-*	2	
	1000	≤200	0 to +85	IP 68, 69K	SS	LCP	N/A	YE	RK 4T-*	2	
	1000	≤200	-25 to +75	IP 68	CPB	LCP	N/A	YE	RK 4T-*	2	
	1000	≤200	-25 to +75	IP 68	TC	LCP	N/A	YE	RK 4T-*	2	
	1000	≤200	-25 to +75	IP 68	TC	LCP	GN	YE	RK 4T-*	2	
10-30 VDC	1000	≤200	-25 to +75	IP 68	SS	LCP	N/A	YE	RK 4T-*	2	
10-55 VDC	1500	≤200	-30 to +85	IP 68	CPB	LCP	N/A	YE	RK 4.4T-*	3	

Uprox+

\* Length in meters.



SPECIFICATIONS	
RATED OPERATING DISTANCE	8mm [.315]
MOUNTING MODE	FLUSH
TEMPERATURE DRIFT	≤±10%
HYSTERESIS	3-15%
MIN. REPEAT ACCURACY	≤ 2%
OPERATING TEMPERATURE	-25°C to +75°C (-13°F to +167°F)
RATED OPERATIONAL VOLTAGE	10-30 VDC
MAX. RIPPLE	≤ 10%
RATED OPERATIONAL CURRENT	≤ 200 mA
NO-LOAD CURRENT	≤ 15 mA
MAX. OFF-STATE CURRENT	≤ 0.1 mA
RATED INSULATION VOLTAGE	≤ 0.5 kV
SHORT-CIRCUIT PROTECTION	YES
MAX. VOLTAGE DROP	≤ 1.8 V
WIRE BREAKAGE PROTECTION	INCORPORATED
REVERSE POLARITY PROTECTION	INCORPORATED
OUTPUT FUNCTION	3-WIRE, NORMALLY OPEN, PNP
MAX. SWITCHING FREQUENCY	≤ 1.5 kHz
HOUSING MATERIAL	BRASS, CHROME PLATED
ACTIVE FACE	PLASTIC, LCP-GF30
VIBRATION RESISTANCE	55 Hz (IN ALL 3 PLANES)
SHOCK RESISTANCE	30 g, 11 ms
DEGREE OF PROTECTION	IP 68
SWITCHING STATUS INDICATION	LED, YELLOW



SOURCE DRAWING - FOR REFERENCE ONLY

NOTES:  
1. UPROX HAS IMMUNITY TO AC AND DC WELD FIELDS.

A	DRAWING RELEASE	RDS	09/20/05	
REV	DESCRIPTION	BY	DATE	ECO. NO.

RELATED DOCUMENTS	3RD ANGLE PROJECTION	THIS DRAWING IS PROPERTY OF TURCK INC. USE OF THIS DOCUMENT WITHOUT WRITTEN PERMISSION IS PROHIBITED.		<b>TURCK INC</b> High Technology Sensors and Automation Controls	
1. 2. 3. 4.		DRFT	RDS	DATE 09/20/05	DESCRIPTION
MATERIAL	TOLERANCES UNLESS OTHERWISE SPECIFIED	DGSN	SCALE 1=1.0	BI 8U-M18-AP6X-H1141	
FINISH	.X ±0.02 .XX ±0.01 .XXX ±0.005 ANGLES ±1° ALL MILLIMETER DIMENSIONS ARE REFERENCE ONLY	UNIT OF MEASUREMENT <b>INCH [ MILLIMETER ]</b>		IDENTIFICATION NO.	REV
		DO NOT SCALE THIS DRAWING		M1644731	A
				FILE: M1644731	SHEET 1 OF 1