


Current refinements (click  to remove)

[Search Tips](#) 
 [Region](#)  [USA](#) [Product Family](#)  [Male Disconnect, Nylon Barrel Insulated – Funnel Entry](#) [Text Search: 'DNF18-250M-C'](#)

Your search criteria matched only one product, shown below.

Related Products
[Female Disconnect, Nylon Barrel Ins...](#)
[Contour Crimp™ Control...](#)
[Wire and Cable Stripping Tools](#)


- Male tab couples with (all .250 x .032) female disconnects
- Male tab can be inserted and removed from the female disconnect without the use of tools for lower installed cost
- Metal insulation grip sleeve crimps to wire insulation, providing protection to the crimp joint during high vibration applications
- Internal barrel serrations assure good wire contact and maximum tensile strength
- Maximum insulation temperature 221°F (105°C)

Part Number:	DNF18-250M-C
RoHS Compliancy Status:	Compliant
Part Description:	Male Disconnect, nylon barrel insulated, funnel entry, 22 – 18 AWG, .250 x .032 tab.
Product Type:	Disconnects
CSA Certified:	Yes
Length (In.):	.90
Max. Ins.:	.136
Panduit Color Code:	Red
Tab Size (In.):	.250 x .032
Tool:	CT-1550, CT-1551, CT-2500
Wire Range:	22 – 18 AWG
Min. Order UOM:	PC
Min. Order Qty.:	100

BOM Qty. (# of Pkgs.)

[Add to My Catalog](#)

 Please [register](#) to utilize the 'Bill of Materials', 'Submit Quotes' and 'My Catalog' features.

[View Content Details](#)

Evaluate

Design a Solution

Install & Maintain

Part Drawings:

 [Male Disconnect, Nylon Barrel Insulate...](#)

Design a Solution

Part Drawings:

 [Male Disconnect, Nylon Barrel Insulated - Funnel Entry pdf](#)

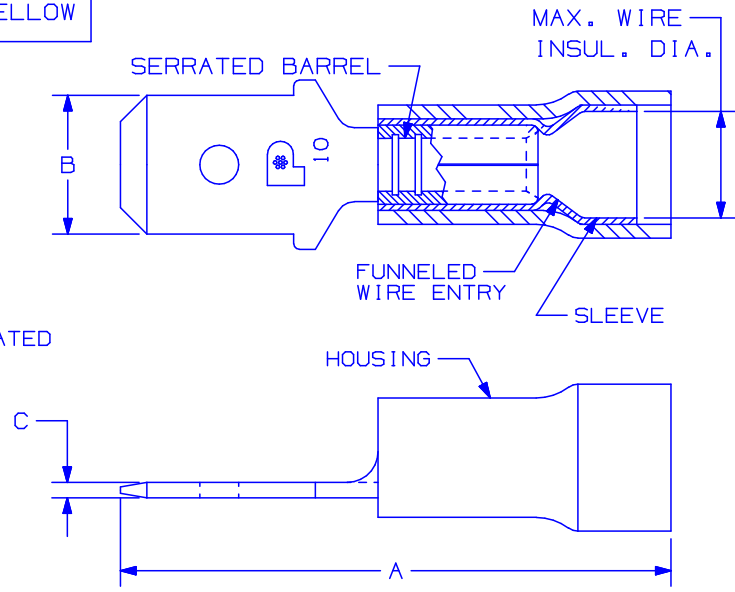
THIS COPY IS PROVIDED ON A RESTRICTED BASIS AND IS NOT TO BE USED IN ANY WAY DETRIMENTAL TO THE INTERESTS OF PANDUIT CORP.

PANDUIT PART NUMBER		WIRE RANGE AWG	MAX. WIRE INSUL. DIA.	DIMENSIONS in.			HOUSING COLOR
PREFIX	PKG			A $\pm .03$	B $\pm .01$	C $\pm .002$	
DNF18-250M	-C -M	22-18	.136 (3,5)	.90 (22,9)	.25 (6,4)	.032 (0,81)	RED
DNF14-250M	-C -M	16-14	.162 (4,1)	.90 (22,9)	.25 (6,4)	.032 (0,81)	BLUE
DNF10-250M*	-L -D	12-10	.230 (5,8)	1.03 (26,2)	.25 (6,4)	.032 (0,81)	YELLOW

*NOT UL LISTED OR CSA CERTIFIED

NOTES:

- CSA CERTIFIED FOR:
 - A. 600V. MAX. VOLTAGE RATING
 - B. 221° F (105° C) MAX. TEMP. RATING
 - C. FOR STRANDED COPPER WIRE ONLY
- MATERIAL:
 - A. STAMPING - .032 (.81) THK COPPER, NICKEL PLATED
 - B. HOUSING - NYLON
 - C. SLEEVE - BRASS, TIN PLATED
- PACKAGE QTY: STD. PKG. -L=50
 BULK PKG. -C=100
 -D=500
 -M=1000
- DIMENSIONS IN BRACKETS ARE IN MILLIMETERS
- INSTALLATION TOOLS:
 - A. CSA CERTIFIED: CT-100, CT-1550, CT-1551
 - B. PANDUIT APPROVED: CT-160, CT-260
- WIRE STRIP LENGTH: $9/32^{+1/32}_0$ (7.1 $^{+0.8}_0$)



CERTIFIED
LR31212

A41322_08



CORP.

TINLEY PARK, ILLINOIS

NYLON INSULATED MALE DISCONNECT
FUNNELED WIRE ENTRY
.250 X .032 (6.35 X 0.81) MALE TAB

08	11/04	KLFU		ADDED LOGO AND MARKING 10			
07	7/01	JAMB	RLS	ADDED PACKAGING COLUMN TO TABLE	09498	TRO	JAC
06	1/01	RM	SKB	FILESPEC WAS N41322AA_PCD_05	08925	TRO	JCJ
05	10/00	SB	SKB	ADDED DNF10-250M AND REMOVED CT-500 & CT-550 TOOLS	08739	TRO	JCJ
04	3/99	JD	SKB	ADDED CT-1551 & CT-1550 TOOLS	07634	TRO	JCJ
REV	DATE	BY	CHK	DESCRIPTION	ECN #	PM	CUST

DRAWN BY	CHK'D	SCALE	DRAWING NO.
DAW	RLS	NONE	A41322