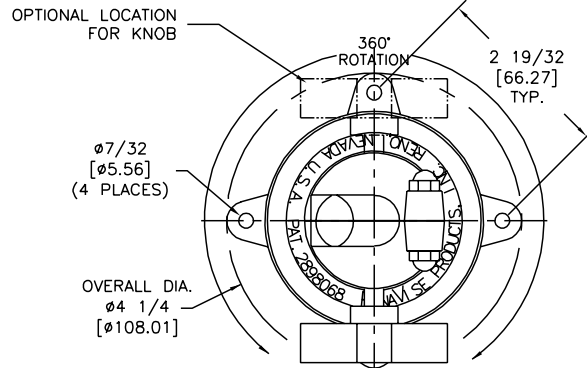


ALL DIMENSIONS ARE
FOR REFERENCE ONLY
DIMENSIONS ARE IN INCHES [MILLIMETERS]
UNLESS OTHERWISE NOTED

PRODUCT SPECIFICATION SHEET			DWG NO	328 SP	
REVISIONS			TITLE		
REV	ECO	DESCRIPTION	BY/DATE	APPROVED	
A		INITIAL RELEASE	IB 8 DEC 95		
B		SHOW OPTIONAL KNOB LOCATION	IB 28 MAR 96		
C		SHOW MOUNTING HOLE DIAMETER	IB 10 JUN 96		
D		CORRECTED DIM IN SPEC FOR HEIGHT, CHANGED MATERIAL OF HALF BALL HOUSING TO ALUMINUM	IB 15 JUL 96		

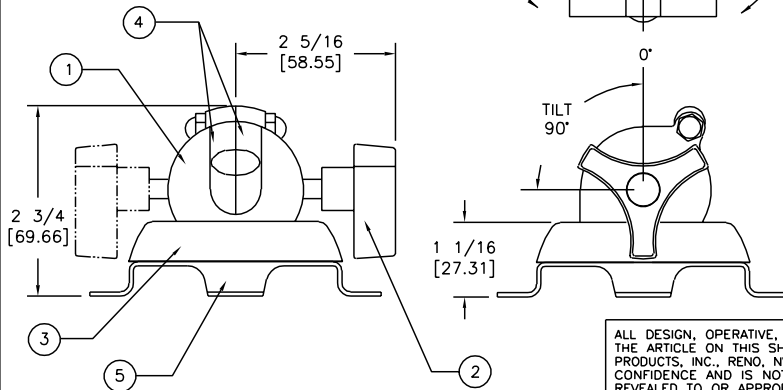


SPECIFICATIONS

OVERALL HEIGHT 2 3/4 [69.66]
 SHIPPING WEIGHT 1.22 POUNDS [.55 KG]
 COLOR BLACK PAINT
 MOVEMENT:
 TILT 180°
 ROTATION 360°
 TURNS 360°

- MATERIAL:
1. HALF BALL HOUSING #380 ALUMINUM CASTING PAINTED BLACK
 2. KNOB BLACK ABS PLASTIC, STEEL SCREW, ZINC PLATED
 3. BODY #3 ZINC DIE CASTING PAINTED BLACK
 4. HALF BALL (2 EA.) #3 ZINC DIE CASTING BLACK ZINC
 5. PHONE MOUNT BRACKET . 16 GAUGE COLD ROLLED STEEL PAINTED BLACK

- NOT SHOWN:
- RETAINER RING #3 ZINC DIECASTING BURNISHED
 - SCREW (3 EA) 10-32 X 1/2 SCREW PHILLIPS DRIVE ZINC PLATED
 - STUD 10-32 1 5/16 STEEL STUD NATURAL FINISH
 - NUT STEEL ACORN NUT 10-32 X 3/8
 - SCREW CONE POINTED 5/16-18 X 1/2 SCREW SOCKET HEAD BLACK OXIDE



ALL DESIGN, OPERATIVE, AND PROCESS DATA PERTAINING TO THE ARTICLE ON THIS SHEET IS THE PROPERTY OF PANAVISE PRODUCTS, INC., RENO, NV. THIS INFORMATION IS DISCLOSED IN CONFIDENCE AND IS NOT TO BE COPIED, REPRODUCED, OR REVEALED TO OR APPROPRIATED BY OTHERS, IN PART OR IN WHOLE, WITHOUT THE EXPRESSED CONSENT OF PANAVISE. THIS PRINT IS LOANED, AND MUST NOT BE USED IN ANY MANNER DETRIMENTAL TO THE INTEREST OF PANAVISE, AND MUST BE RETURNED ON DEMAND



PANAVISE®
 7540 Colbert Drive, Reno, Nevada 89511-1225
 Phone (702) 850-2900, Fax (702) 850-2929

TITLE
 STANDARD PHONE MOUNT
 BASE MODEL 328

BASIC DIM. ENGLISH [ALTERNATE DIM. METRIC]

DRAWN	DATE	SCALE	SIZE	DWG. NO.	REV
I BENNETT	15 JUL 96	NONE	A	328 SP	D

SHT 1 OF 1