


Part Number: **5952101002F**

### General Description

Series	595
Configuration	2 mm Lens
Description	2MM PRISM R SAMPLE STRIP
Sizes	2mm
Lamp Type	Single Color

### Operating Characteristics

Color	 Red
-------	---



This is a  
RoHS Compliant Product  
To learn more click [here](#)

PART NUMBER	LED COLOR
595-2101-002F	RED
595-2101-007F	
595-2101-013F	
595-2201-002F	HI. INTENSITY GREEN
595-2201-007F	
595-2201-013F	
595-2301-002F	GREEN
595-2301-007F	
595-2301-013F	
595-2401-002F	YELLOW
595-2401-007F	
595-2401-013F	
595-2501-002F	ORANGE
595-2501-007F	
595-2501-013F	
595-2701-002F	AllInGp YELLOW
595-2701-007F	
595-2701-013F	

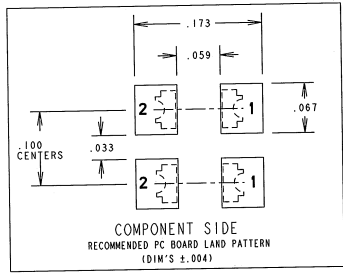
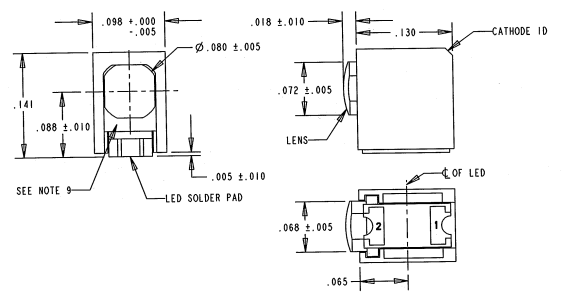
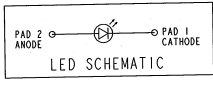
OPERATING CHARACTERISTICS AT 25°C AMBIENT						
CHARACTERISTICS		MIN	TYP	MAX	UNITS	TEST CONDITIONS
LUMINOUS INTENSITY	RED		25.0		mcd	I <sub>f</sub> = 20 mA
	GREEN		11.0			
	YELLOW		9.0			
FORWARD VOLTAGE	RED		1.7	2.0	V	I <sub>f</sub> = 20 mA
	GREEN		2.1	2.5		
	YELLOW		2.2	2.5		
REVERSE VOLTAGE	RED		4		V	I <sub>r</sub> = 100 µA
	GREEN		4			
	YELLOW		4			
PEAK WAVELENGTH	RED		660		nm	
	GREEN		560			
	YELLOW		580			

OPERATING CHARACTERISTICS AT 25°C AMBIENT						
CHARACTERISTICS		MIN	TYP	MAX	UNITS	TEST CONDITIONS
LUMINOUS INTENSITY	HI. INT. GREEN		8.5		mcd	I <sub>f</sub> = 10 mA
	AllInGp YELLOW		41.0			
FORWARD VOLTAGE	HI. INT. GREEN		2.2	2.6	V	I <sub>f</sub> = 20 mA
	AllInGp YELLOW		2.02	2.4		
REVERSE CURRENT	HI. INT. GREEN			100	µA	V <sub>r</sub> = 5 V
PEAK WAVELENGTH	HI. INT. GREEN		566		nm	
	AllInGp YELLOW		592			

ABSOLUTE MAXIMUM RATING AT 25°C AMBIENT			
CHARACTERISTICS		MIN	MAX
POWER DISSIPATION	HI. INT. GREEN		65
	AllInGp YELLOW		81
DERATE LINEARLY FROM 75°C (+ FROM 55°C)	HI. INT. GREEN		0.75
	AllInGp YELLOW		0.58 *
CONTINUOUS FORWARD CURRENT	HI. INT. GREEN		25
	AllInGp YELLOW		30
OPERATING TEMPERATURE	ALL		-30 TO 85
STORAGE TEMPERATURE	ALL		-40 TO 100

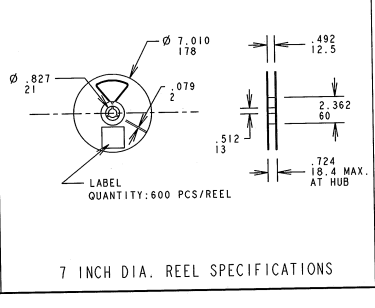
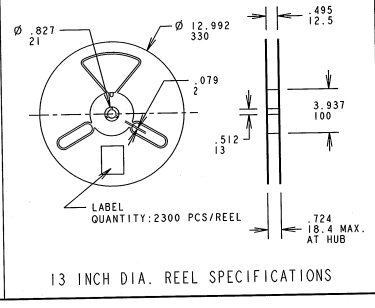
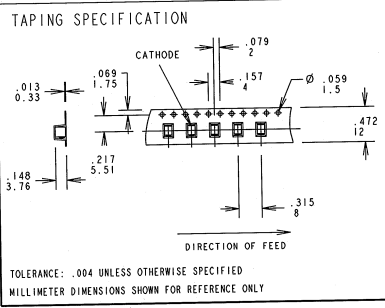
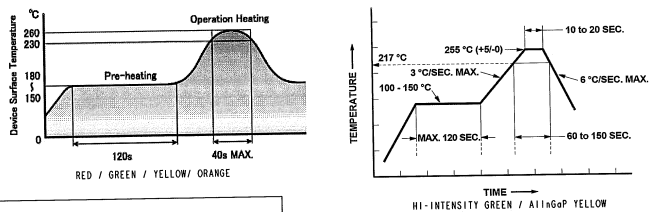
REV	ECN NO	REVISIONS	DRN	CKD	APP	DATE
A		NEW RELEASE	TWC	N.O.	WES	1-12-06
B		NEW RELEASE	KLJ	TR		4/15/08

ABSOLUTE MAXIMUM RATINGS AT 25°C AMBIENT			
CHARACTERISTICS		MIN	MAX
POWER DISSIPATION	RED		60
	GREEN		75
	YELLOW		75
	ORANGE		75
DERATE LINEARLY FROM 25°C	RED, GRN, YEL		0.42
CONTINUOUS FORWARD CURRENT	RED, GRN, YEL, ORANGE		30
PEAK FORWARD CURRENT (1/10 DUTY CYCLE, 0.1 ms PULSE WIDTH)	RED, GRN, YEL, ORANGE		70
OPERATING TEMPERATURE	RED, GRN, YEL, ORANGE		-30 TO +85
	RED, GRN, YEL, ORANGE		-30 TO 80
STORAGE TEMPERATURE	ORANGE		-40 TO +100



- NOTES:
- 1- MILLIMETER DIMENSIONS SHOWN FOR REFERENCE ONLY.
  - 2- PAD NUMBERS ARE FOR REFERENCE ONLY. DESIGNATION NON-EXISTENT ON PART.
  - 3- STORAGE CONDITIONS FOR TAPED PRODUCT: RE-TAPING MAY BE NECESSARY FOR PRODUCTS STORED MORE THAN TWELVE MONTHS.
  - 4- ORDER QUANTITY IS LED ASSEMBLIES, NOT REELS.
  - 5- ...002 SUFFIX MEANS PARTS ARE PACKED ON A 20 pc SAMPLE STRIP
  - 6- ...007 SUFFIX MEANS PARTS ARE PACKED ON A 7 INCH REEL, 600 PCS/REEL
  - 7- ...013 SUFFIX MEANS PARTS ARE PACKED ON A 13 INCH REEL, 2300 PCS/REEL
  - 8- DIALIGHT PART NUMBERS = 595-2101-002F, 595-2101-007F, 595-2101-013F, 595-2201-002F, 595-2201-007F, 595-2201-013F, 595-2301-002F, 595-2301-007F, 595-2301-013F, 595-2401-002F, 595-2401-007F, 595-2401-013F, 595-2501-002F, 595-2501-007F, 595-2501-013F, VACUUM SEAL BAG.
  - 9- PACKAGE ONE HUMIDITY INDICATOR CARD (P/N 9100-999-0662-99) PER BAG.
  - 10- PER LENS INSPECTION PROCEDURE 01-225 THIS AREA CAN HAVE PORTIONS MISSING OF UP TO 50%. NON-CRITICAL AREA BELOW LENS.

RoHS COMPLIANT REFLOW PROFILES



**RoHS Compliant 595-2X01-0XXF Surface Mount CBI**

Part Numbers with the "F" suffix ending are RoHS Compliant.  
 Example: 595-2101-002F  
 Packaging is marked with "RoHS Compliant" label or equivalent markings.  
 Parts can be wave soldered, dip soldered or hand soldered using typical lead-free soldering process with max 260°C temp. for 5 sec.

SCALE: DRAWING SCALE	DRAWING NUMBER	REV
ALL DIM'S IN: INCHES (MM)	C-17345	B
TOLERANCES: UNLESS OTHERWISE SPECIFIED	TITLE	SURFACE MOUNT CBI
FRACTIONS: 1/16 IN	DRAWING NUMBER	RoHS COMPLIANT
DECIMALS: 1.0001 - .01	TITLE	
DECIMALS: 1.0001 - .005	MATERIAL	
ANGLES: .1°		
FINISH:	Dialight	1501 ROUTE 34 SOUTH FARMINGDALE, NJ 07727
FSM: 83330	SHEET 1 OF 1	FAMILY TABLE: