

Style	Surface Mount Fuse	Surface Mount Fuse	Surface Mount Fuse	Surface Mount Fuse
Dimensions	7.4 x 3.1 mm	12 x 5.2 mm	11 x 4.6 mm	11 x 4.6 mm
Product picture				
Type	<b>OMT 125</b>	<b>OMZ 125</b>	<b>OMF 250</b>	<b>OMT</b>
Rated Voltage	125 VAC/DC	125 VAC/DC	250 VAC/DC	125 - 250 VAC
Rated Current	0.25 - 5 A	0.25 - 5 A	0.25 - 4 A	0.75 - 5 A
Breaking Capacity	100 A	100 A	100 A	50 A - 100 A
Comment				
Characteristic	Time-Lag T	Time-Lag T	Quick-Acting F	Time-Lag T
Approvals	CCC	CCC	CCC	CCC
Catalogue page	xxx	xxx	xxx	xxx

Style	Surface Mount Fuse	Surface Mount Fuse	Surface Mount Fuse	Subminiature Fuse
Dimensions	5 x 20 mm	5 x 20 mm	5 x 20 mm	6.4 x 6.4 mm
Product picture				
Type	<b>SMD-FST</b>	<b>SMD-SPT</b>	<b>SMD-FTT</b>	<b>MSF 125</b>
Rated Voltage	250 VAC	250 VAC	250 VAC	125 VAC/DC
Rated Current	0.05 - 20 A	1 - 16 A	0.16 - 4 A	0.1 - 5 A
Breaking Capacity	35 A - 125 A	500 A - 1500 A	35 A	300 A
Comment				
Characteristic	Time-Lag T	Time-Lag T	Super-Time-Lag TT	Quick-Acting F
Approvals	CCC	CCC	UL	CCC
Catalogue page	xxx	xxx	see WEB	xxx

Style	Subminiature Fuse	Subminiature Fuse	Subminiature Fuse	Subminiature Fuse
Dimensions	8.5 x 8.5 mm	8.5 x 8.5 mm	8.5 x 8.5 mm	8.5 x 8.5 mm
Product picture				
Type	<b>MSF 250</b>	<b>MST 250</b>	<b>MSTU 250</b>	<b>MXT 250</b>
Rated Voltage	250 VAC/DC	250/125 VAC/DC	250 VAC	250 VAC
Rated Current	0.04 - 5 A	0.05 - 6.3 A	0.063 - 10 A	0.8 - 10 A
Breaking Capacity	35 A	35 A - 63 A	50 A	100 A
Comment	Fuse Kit available	Fuse Kit available		
Characteristic	Quick-Acting F	Time-Lag T	Time-Lag T	Time-Lag T
Approvals	CCC	CCC	CCC	CCC
Catalogue page	xxx	xxx	xxx	xxx

## OMT 125



OMT 125

UL 248-14 · 125 VAC/DC · Time-Lag T



## Description

- Directly solderable on printed circuit boards
- OMZ 125 = OMT 125 + OMH 125

## Standards

- UL 248-14
- CSA C22.2 no. 248.14

## Approvals

- UL File Number: E41599

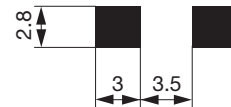
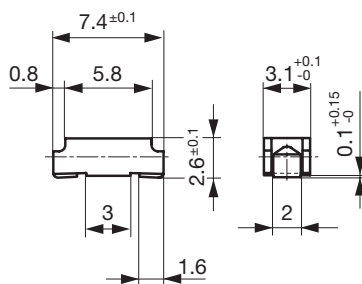
## Technical Data

Rated Voltage	125 VAC/DC
Rated Current	0.25 - 5 A
Breaking Capacity	100 A
Characteristic	Time-Lag T
Mounting	PCB,SMT
Admissible Ambient Air Temp.	-40 °C to 85 °C
Climatic Category	40/085/21 acc. to IEC 60068-1
Material: Housing	Thermoplastic, UL 94V-0
Material: Terminals	Tin-Plated Copper Alloy
Unit Weight	0.08 g
Stock Conditions	0 °C to 60 °C, max. 70% r.h.
Product Marking	Type, Current Rating, Approvals

Soldering Methods	Reflow, Wave
Solderability	245 °C / 3 sec acc. to IEC 60068-2-58, Test Td
Resistance to Soldering Heat	260 °C / 10 sec acc. to IEC 60068-2-58, Test Td
Moisture Resistance Test	MIL-STD-202, Method 106E (50 cycles in a temp./mister chamber)
Terminal Strength	MIL-STD-202, Method 211A (Deflection of board 1 mm for 1 minute)
Case Resistance	acc. to EIA/IS-722, Test 4.7 >100 MΩ (between leads and body)
Mechanical Shock	MIL-STD-202, Method 213B (Shock 50gn, half sine wave, 11 ms)
Resistance to Solvents	MIL-STD-202, Method 215A
Flammability	min. UL 94V-1 (acc. to EIA/IS-722, Test 4.12)

## Dimensions

Length 7.4 mm



OMT 125

Solder pads

## Pre-Arcing Time

Rated Current In	1.0 x In	2.0 x In	8.0 x In	8.0 x In
	min.	max.	min.	max.
0.25 A - 0.375 A	4 h	60 s	2 ms	30 ms
0.5 A - 6.3 A	4 h	60 s	5 ms	100 ms

## OMT 125

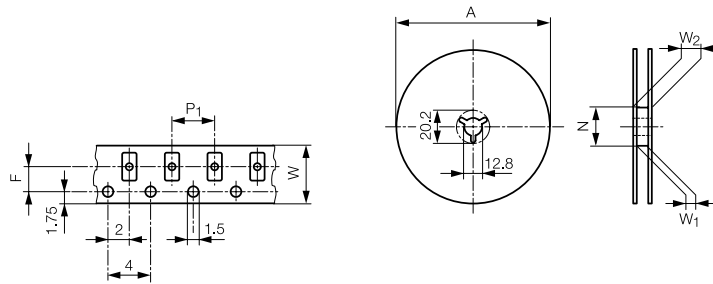
## Variants

Order Number	Type	Fuse	Holder	Rated Current [A]	Rated Voltage [V]	Breaking Capacity	Voltage Drop 1.0 In typ [mV]	Power Dissipation 1.0 In typ [mW]	Melting I <sup>2</sup> t 8.0 In typ [A <sup>2</sup> s]	UL <sup>®</sup>	CCC
3404.0110.xx	OMT 125	●		0.25	125	1)	142	35.5	0.02	●	●
3404.0111.xx	OMT 125	●		0.375	125	1)	123	46.1	0.054	●	●
3404.0112.xx	OMT 125	●		0.5	125	1)	95	47.5	0.16	●	●
3404.0113.xx	OMT 125	●		0.75	125	1)	92	69	0.43	●	●
3404.0114.xx	OMT 125	●		1	125	1)	88	88	0.77	●	●
3404.0115.xx	OMT 125	●		1.5	125	1)	82	123	1.73	●	●
3404.0116.xx	OMT 125	●		2	125	1)	75	150	3.58	●	●
3404.0117.xx	OMT 125	●		2.5	125	1)	137	343	5.6	●	●
3404.0118.xx	OMT 125	●		3	125	1)	128	384	8.06	●	●
3404.0119.xx	OMT 125	●		3.5	125	1)	119	417	11.76	●	●
3404.0120.xx	OMT 125	●		4	125	1)	77	308	12.3	●	●
3404.0121.xx	OMT 125	●		5	125	1)	79	395	20.8	●	●
3404.0122.xx	OMT 125	●		6.3	125	1)	82	516	25.4	●	●

1) 100 A @ 125 VAC , p.f. ≥ 0.95 / 100 A @ 125 VDC

## Packaging Unit

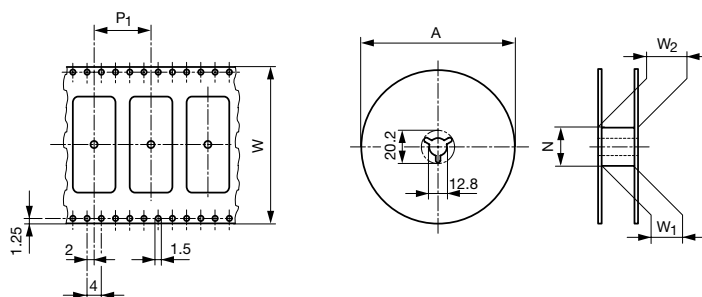
- .11 Plastic Bag (100 pcs.)
- .22 Blister Tape 18 cm Reel (750 pcs.)
- .24 Blister Tape 33 cm Reel (3000 pcs.)



**Blister tape and Reel Dimensions**

according to IEC 60286-3

Type	P1 [mm]	F [mm]	W [mm]	N [mm]	W1 [mm]	W2 [mm]	A						
							750 Pcs.	1000 Pcs.	1500 Pcs.	2000 Pcs.	3000 Pcs.	5000 Pcs.	10000 Pcs.
USF 0603	4	3.5	8	62	8.4	14.4	180 mm						
USF 1206	4	3.5	8	62	8.4	14.4	180 mm						
MGA	4	3.5	8	62	8.4	14.4	180 mm			180 mm			330 mm
UMT 250	8	11.5	24	62	24.4	30.4	330 mm						
172876	4	5.5	12	62	12.4	18.4	180 mm			330 mm			
MKF	4	5.5	12	62	12.4	18.4	180 mm [500 Pcs.]		180 mm				
MSB	4	5.5	12	62	12.4	18.4	180 mm			330 mm			
MKT	4	5.5	12	62	12.4	18.4	180 mm [500 Pcs.]		180 mm				
OMF 63	8	7.5	16	62	16.4	22.4	180 mm			330 mm			
OMK 63	8	11.5	24	62	24.4	30.4	330 mm						
OMF 125	8	7.5	16	62	16.4	22.4	180 mm			330 mm			
OMK 125	8	11.5	24	62	24.4	30.4	180 mm		330 mm				
OMT 125	8	7.5	16	62	16.4	22.4	180 mm			330 mm			
OMZ 125	8	11.5	24	62	24.4	30.4	180 mm		330 mm				
OMF 250	8	11.5	24	62	24.4	30.4	330 mm						
OMT 250	8	11.5	24	62	24.4	30.4	330 mm						
TF 600	8	11.5	24	62	24.4	30.4	330 mm						
OSU 125	8	7.5	16	62	16.4	22.4	180 mm			330 mm			
OSU 250	8	11.5	24	62	24.4	30.4	330 mm						
OMH 125	8	11.5	24	62	24.4	30.4	180 mm		330 mm				
PFNF	4	3.5	8	62	8.4	14.4	180 mm						
PFMF	8	5.5	12	62	12.4	18.4	180 mm		180 mm				
PFDF	8	7.5	16	62	16.4	22.4	360 mm						
PFSM	8/12	7.5	16	62	16.4	22.4	360 mm		360 mm				
PFHT	8/12	7.5	16	62	16.4	22.4	360 mm		360 mm				



**Blister tape and Reel Dimensions**

according to IEC 60286-3

Type	P1 [mm]	W [mm]	N [mm]	W1 [mm]	W2 [mm]	A		
						250 Pcs.	400 Pcs.	2000 Pcs.
SMD-FST	8	32	100	32.4	38.4	380 mm		
SMD-SPT	8	32	100	32.4	38.4	380 mm		
SMD-FTT	8	32	100	32.4	38.4	380 mm		
OGN-SMD	16	44	100	44.4	50.4	380 mm		
FPG7	16	56	150	56.4	62.4	380 mm		