

FlukeView Forms Software with cable



Expand the power of the world's most rugged, accurate handheld test tools with FlukeView® Forms Documenting Software.

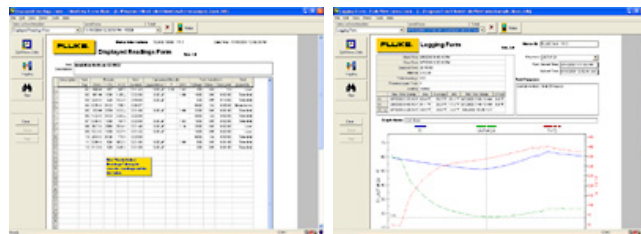
To address the increasing demands for reporting and documentation, Fluke presents FlukeView Forms documenting software. FlukeView Forms increases the power of your Fluke tool by enabling you to document, store and analyze individual readings or series of measurements, then convert them into professional-looking documents.

FlukeView Forms supports the following meters:

- Fluke 287 and 289 (Model FVF-SC2)
- Fluke 180 Series Digital Multimeters (Model FVF-SC2)
- Fluke 1653 Installation Testers (Model FVF-SC2)
- Fluke-1550B MegOhmMeter (Model FVF-SC2)
- Fluke 53-II & 54-II Thermometers (Model FVF-SC1)
- Fluke 87-IV & 89-IV Digital Multimeters (Model FVF-SC1)
- Fluke 45 Bench Meter (Model FVF-SC3)
- Fluke 789 ProcessMeter™ (Model FVF-SC2)

FlukeView® Forms Basic

Owners of Fluke 280 series, 180 series, 789 and 1550B, who do not need the full power of FlukeView forms, can use FlukeView® Basic version. Transfer data points from your meter to your PC and use the two standard, non-customizable forms to display your readings in table or graphical form. For a larger array of forms or to use FlukeView® Forms Designer to customize your forms, upgrade to FlukeView® Forms version 3.3 with FVF-UG.



FlukeView Forms Compatibility Chart

FVF Option	Instrument	Cable**	Application Level
FVF-UG	Software only upgrade, Fluke 568, 975, 983	No Cable included	FVF Full (includes Designer)
FVF-SC1	Fluke 53-II, 54-II, 87-IV*, 89-IV*	Serial / IRDA	
FVF-SC2	Fluke 280 Series, 789, 1550B, 1653, 180 Series*	USB / IR	
FVF-SC4	Fluke 8808A, 8845A, 8846A, 45*	USB / Serial	
FVF-BASIC	Fluke 280 Series, 789, 1550B, 1653, 180 Series*	USB / IR	FVF BASIC
FVF-SC5	8808A, 8845A, 8846A, 45*	USB / Serial	

* Obsolete

** USB cables are not supported for Microsoft Windows NT 4.0

Model Name	Description
FlukeView Forms	FlukeView Forms Software with cable

© 1995 - 2008 Fluke Corporation