

## EASY-MARK™ Labeling Software

Generate labels quickly and easily with *EASY-MARK™* Labeling Software with market specific labeling application tools that assist in creating optimum signs, pipe markers, and labels for many common labeling applications. *EASY-MARK™* saves time and money in creating labels for wire/cable, network components, and safety identification. Features such as WYSIWYG user interface, data import, symbol import, barcoding and pre-loaded label formats make label creation easy and flexible.



**PATENTED**

### Key Features

### Benefits

<b>Market specific labeling application tools</b>	Reduces time (up to 75%) and errors by: simplifying label creation for network components, panel building, construction and maintenance; selecting and formatting the optimum label for your specific application; automatically generating standards (OSHA, TIA, ANSI, etc.) compliant legends on your label
<b>Barcoding</b>	Easy-to-use wizard quickly generates barcodes in the following symbologies: Codabar, Code 128 (A, B, C, Auto), Code 39, Code 39 Extended, Code 93, Code 93 Extended, Data Matrix, EAN/JAN 13, EAN/JAN 8, Interleaved 2 of 5, MSI Plessey, PDF417, UCC128, UPC-A, UPC-E (System0, System1), BC-Postnet
<b>Multiple language options</b>	Instructions and user interface are available in English, Chinese, French, German, Italian, Korean, Portuguese and Spanish
<b>WYSIWYG (What You See Is What You Get)</b>	Program allows you to see labels on-screen as they will appear when printed to improve productivity and reduce errors
<b>Alpha and numeric serializations</b>	Reduces time required to create incremented legend lists
<b>Data file import</b>	Reduce time and errors by importing data previously created in EXCEL <sup>®</sup> (.XLS) files or comma separated value (.CSV) files onto labels
<b>Image library and symbol import</b>	Choose from over 100 standard symbols for electrical and data communications applications and import .jpeg, .bmp, .gif, or .wmf symbols
<b>Pre-loaded PANDUIT label formats</b>	Labels for thermal transfer, dot matrix, laser and ink jet, including <i>ULTIMATE ID®</i> Network Labeling System, can be created quickly and easily
<b>Quick text entry</b>	Enter text for individual labels or an entire range of labels
<b>Upgradeable</b>	Future revisions and enhancements including additional markets and application tools will be available on the <i>PANDUIT</i> website

### System Requirements

- 64 MB of hard drive space and 64 MB of RAM (256 MB of RAM recommended)
- Mouse or compatible pointing device
- WINDOWS<sup>®</sup> 2000, NT 4.X, or XP
- CD-ROM Drive

### Ordering Information

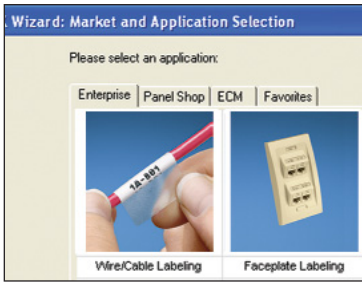
Part Number	Description	Std. Pkg. Qty.	Std. Ctn. Qty.
PROG-EMCD3	<i>EASY-MARK™</i> Labeling Software, CD-ROM.	1	10

<sup>®</sup>WINDOWS, WINDOWS 2000, NT 4.X and XP, and EXCEL are registered trademarks of Microsoft Corporation in the United States and/or other countries.

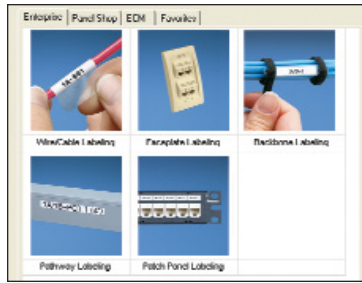
# EASY-MARK<sup>®</sup> Labeling Software



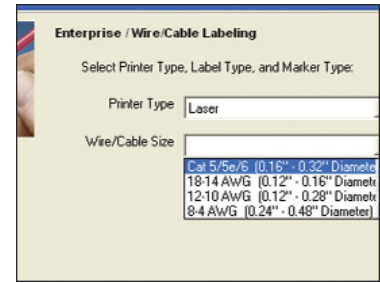
Now With Market Specific Labeling Application Tools



Select Specific Market



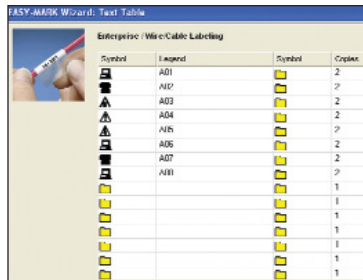
Select Labeling Application



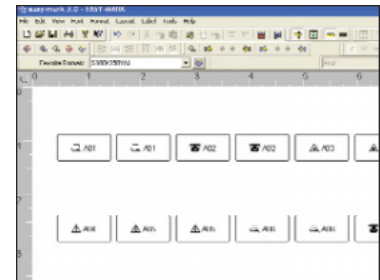
Select Details of Application



Select Method of Data Input



Enter Data



EASY-MARK<sup>®</sup> Automatically Selects and Populates Labels

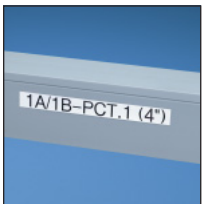
## Network Application Examples\*



Wire/Cable Labeling



Faceplate Labeling



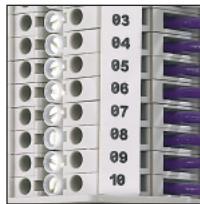
Pathway Labeling



Patch Panel Labeling

\*Not all applications shown

## Panel Building Application Examples\*



Terminal Block Labeling



Safety Sign Labeling



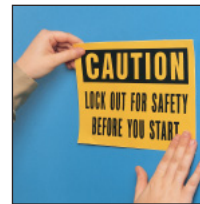
Wire/Cable Labeling



Heat Shrink Labeling

\*Not all applications shown

## Construction and Maintenance Application Examples\*



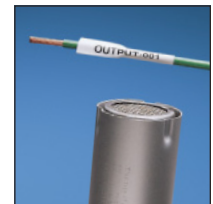
Safety Sign Labeling



Pipe Marking



Wire/Cable Labeling



Heat Shrink Labeling

\*Not all applications shown