

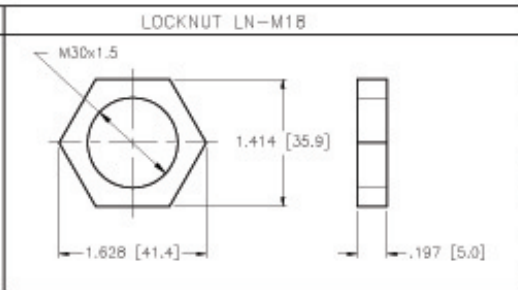
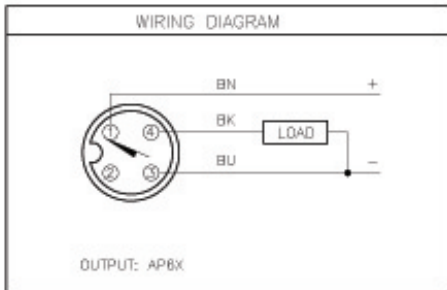
# Inductive Sensors



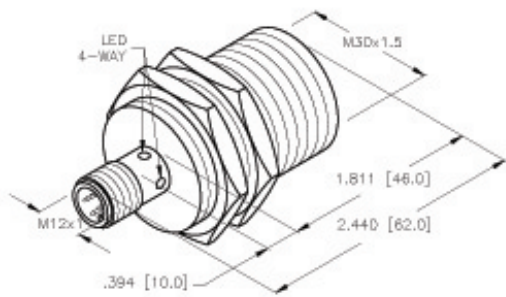
Housing Style	Part Number	ID Number	Features	Sensing Range (mm)	Output	
<b>30 mm - Embeddable, eurofast® Connection</b> 	Bi 10-M30-AD4X-H1141	T4417500		10	2-Wire DC	
	Bi 12-M30-AD4X-H1141	T4417041	Extended Range	12		
	Bi 10-M30-AN6X-H1141	T4617600		10	3-Wire DC NPN	
	Bi 10U-EM30-AN6X-H1141	M1636350	Uprox	10		
	Bi 10U-EM30H-AN6X2-H1141	M1636407	Uprox, Stoneface	10		
	Bi 10U-EM30H-AN6X2-H1141/S1589	M1636490	weldguard, Uprox	10		
	Bi 10U-M30-AN6X-H1141	M1636150	Uprox	10		
	Bi 10U-M30-AN6X2-H1141	M1636155	Uprox	10		
	Bi 12-EM30WD-AN6X-H1141	M4614544	Washdown	12		
	Bi 15-M30-AN6X-H1141	T4618600	Extended Range	15		
	Bi 15-EM30H-AN6X-H1141	T4618692	Extended Range	15		
	Bi 15-EM30H-AN6X-H1141/S1589	T4618693	weldguard	15		
	Bi 10-M30-AP6X-H1141	T4617500		10	3-Wire DC PNP	
	Bi 10U-EM30-AP6X-H1141	M1636340	Uprox	10		
	Bi 10U-EM30H-AP6X2-H1141	M1636406	Uprox, Stoneface	10		
	Bi 10U-EM30H-AP6X2-H1141/S1589	M1636491	weldguard, Uprox	10		
	Bi 10U-M30-AP6X-H1141	M1636140	Uprox	10		
	Bi 10U-M30-AP6X2-H1141	M1636145	Uprox	10		
	Bi 12-EM30WD-AP6X-H1141	M4614541	Washdown	12		
	Bi 15-M30-AP6X-H1141	T4618500	Extended Range	15		
	Bi 15-EM30H-AP6X-H1141	T4618592	Extended Range	15		
	Bi 15-EM30H-AP6X-H1141/S1589	T4618593	weldguard	15		
	Bi 15-EM30H-AP6X-H1141/S1610	T4618589	Weld/armorguard	15		
	Bi 10-M30-VN4X-H1141	T1571600	Comp. Outputs	10	4-Wire DC NPN	
	Bi 10U-M30-VN4X-H1141	M1582352	Uprox, Comp. Outputs	10		
	Bi 15-M30-VN4X-H1141	T4570711	Comp. Outputs	15	4-Wire DC PNP	
	Bi 10-M30-VP4X-H1141	T1561600	Comp. Outputs	10		
	Bi 10U-M30-VP4X-H1141	M1582253	Uprox, Comp. Outputs	10		
	Bi 15-M30-VP4X-H1141	T4570710	Comp. Outputs	15	2-Wire DC	
	Bi 10-M30-Y1X-H1141	M4020200		10		
	<b>30 mm - Embeddable, eurofast Connection, Stainless Steel</b> 	Bi 10-EM30F-AP6X-H1141	M4614537	Stainless Steel Front Cap	10	3-Wire DC PNP

Voltage	Switching Freq. (Hz)	Operating Current (mA)	Operating Temp. (°C)	Protection	Housing	Face	Power LED	Output LED	Mating Cordset	Wiring Diagram #	Wiring Diagrams					
10-65 VDC	500	≤100	-25 to +70	IP 67	CPB	PA 12	N/A	YE	RK 4.2T-*	1	<b>Diagram 1</b> 					
	500	≤100	-25 to +70	IP 67	CPB	PA 12	N/A	YE	RK 4.2T-*	1						
10-30 VDC	500	≤200	-25 to +70	IP 67	CPB	PA 12	N/A	YE	RK 4T-*	2	<b>Diagram 2</b> 					
	2000	≤200	-30 to +85	IP 68	SS	PA 12	N/A	YE	RKV 4T-*	2						
	2000	≤200	-30 to +85	IP 68	SS	SF	GN	YE	RKV 4T-*	2						
	2000	≤200	-30 to +85	IP 68	SS	WG	GN	YE	RKG 4T-*/S600	2						
	2000	≤200	-30 to +85	IP 67	CPB	PA 12	N/A	YE	RK 4T-*	2						
	2000	≤200	-30 to +85	IP 67	CPB	PA 12	GN	YE	RK 4T-*	2						
	1000	≤200	-25 to +85	IP 68, 69K	SS	PVDF	N/A	YE	RK 4T-*	2						
	300	≤200	-25 to +70	IP 67	CPB	PA 12	N/A	YE	RK 4T-*	2						
	300	≤200	-25 to +70	IP 67	SS	SF	N/A	YE	RKG 4T-*/S600	2						
	300	≤200	-25 to +70	IP 67	SS	WG	N/A	YE	RKG 4T-*/S600	2						
10-30 VDC	500	≤200	-25 to +70	IP 67	CPB	PA 12	N/A	YE	RK 4T-*	3	<b>Diagram 3</b> 					
	2000	≤200	-30 to +85	IP 68	SS	PA 12	N/A	YE	RKV 4T-*	3						
	2000	≤200	-30 to +85	IP 68	SS	SF	GN	YE	RKV 4T-*	3						
	2000	≤200	-30 to +85	IP 68	SS	WG	GN	YE	RKG 4T-*/S600	3						
	2000	≤200	-30 to +85	IP 67	CPB	PA 12	N/A	YE	RK 4T-*	3						
	2000	≤200	-30 to +85	IP 67	CPB	PA 12	GN	YE	RK 4T-*	3						
	1000	≤200	-25 to +85	IP 68, 69K	SS	PVDF	N/A	YE	RK 4T-*	3						
	300	≤200	-25 to +70	IP 67	CPB	PA 12	N/A	YE	RK 4T-*	3						
	300	≤200	-25 to +70	IP 67	SS	SF	N/A	YE	RKV 4T-*	3						
	300	≤200	-25 to +70	IP 67	SS	WG	N/A	YE	RKG 4T-*/S600	3						
10-65 VDC	500	≤200	-25 to +70	IP 67	CPB	PA 12	N/A	YE	RK 4.4T-*	4	<b>Diagram 4</b> 					
	2000	≤200	-30 to +85	IP 67	CPB	PA 12	N/A	YE	RK 4.4T-*	4						
	500	≤200	-25 to +70	IP 67	CPB	PA 12	N/A	YE	RK 4.4T-*	4						
	10-65 VDC	500	≤200	-25 to +70	IP 67	CPB	PA 12	N/A	YE	RK 4.4T-*		5	<b>Diagram 5</b> 			
		2000	≤200	-30 to +85	IP 67	CPB	PA 12	N/A	YE	RK 4.4T-*		5				
		300	≤200	-25 to +70	IP 67	CPB	PA 12	N/A	YE	RK 4.4T-*		5				
		5-30 VDC	2000	Remote	-25 to +70	IP 67	CPB	PA 12	N/A	YE		RK 4.21T-*		6	<b>Diagram 6</b> 	
			10-30 VDC	180	≤200	-25 to +80	IP 68, 69K	SS	SS	N/A		YE		RKV 4T-*		3

\* Length in meters.



SPECIFICATIONS	
OPERATING VOLTAGE	10-30 VDC
RIPPLE	≤10%
HYSTERESIS (DIFFERENTIAL TRAVEL)	3-15% (5% TYPICAL)
VOLTAGE DROP ACROSS CONDUCTING SENSOR	≤1.8 V at 200 mA
OUTPUT FUNCTION	NORMALLY OPEN 3-WIRE DC SELF-CONTAINED
TTL COMPATIBLE	NO
SHORT-CIRCUIT PROTECTED	YES
TRIGGER CURRENT FOR OVERLOAD PROTECTION	≥220 mA
CONTINUOUS LOAD CURRENT	≤200 mA
OFF-STATE (LEAKAGE) CURRENT	≤ 10 μA
NO-LOAD CURRENT	5.5-9.5 mA
TIME DELAY BEFORE AVAILABILITY	≤8 ms
POWER-ON EFFECT	Per IEC 947-5-2
REVERSE POLARITY PROTECTION	INCORPORATED
WIRE-BREAK PROTECTION	INCORPORATED
TRANSIENT PROTECTION	Per EN 60947-5-2
OPERATING TEMPERATURE	-25°C to +70°C (-13°F to +158°F)
ENCLOSURE	MEETS NEMA 1, 3, 4, 6, 13 AND IEC IP67
SHOCK	30 g, 11 ms
VIBRATION	55 Hz, 1 mm AMPLITUDE (IN ALL 3 PLANES)
LED FUNCTION	YELLOW: OUTPUT ENERGIZED
RATED OPERATING DISTANCE(S <sub>R</sub> )	10 mm = .394" (NOMINAL)
SWITCHING FREQUENCY	500 Hz
REPEATABILITY	≤2% of RATED OPERATING DISTANCE
SHIELDED	YES



SOURCE DRAWING - FOR REFERENCE ONLY

NOTE: ALL TOLERANCES ±1.0 mm.

RELATED DOCUMENTS 1. 2. 3. 4.	3RD ANGLE PROJECTION 	THIS DRAWING IS PROPERTY OF TURCK INC. USE OF THIS DOCUMENT WITHOUT WRITTEN PERMISSION IS PROHIBITED.	<b>TURCK INC</b> High Technology Sensors and Automation Controls	
			MATERIAL BRASS BARREL	TOLERANCES UNLESS OTHERWISE SPECIFIED .X ±0.02 .XX ±0.01 .XXX ±0.005 ANGLES ±1° ALL MILLIMETER DIMENSIONS ARE REFERENCE ONLY
FINISH COPPER/NICKEL/ CHROME PLATING	UNIT OF MEASUREMENT <b>INCH [ MILLIMETER ]</b>		IDENTIFICATION NO. T4617500	REV C
DO NOT SCALE THIS DRAWING	FILE: T4617500	SHEET 1 OF 1		