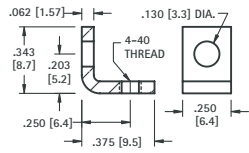


THREADED MOUNTING BRACKETS

THREADED MOUNTING BRACKETS

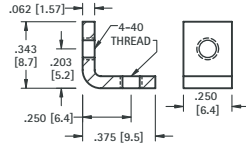
4-40 THREAD



MATERIAL:
.062 (1.57) thick Steel,
Zinc Plate

CAT. NO. 612

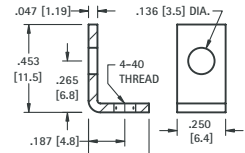
4-40 THREAD



MATERIAL:
.062 (1.57) thick Steel,
Zinc Plate

CAT. NO. 621

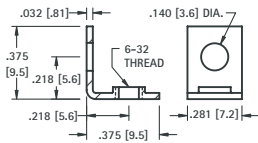
4-40 THREAD



MATERIAL:
.047 (1.19) thick Brass,
Tin Plate

CAT. NO. 616

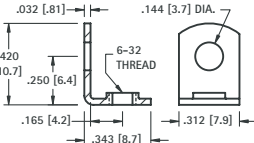
6-32 THREAD



MATERIAL:
.032 (.81) thick Brass,
Nickel Plate

CAT. NO. 634

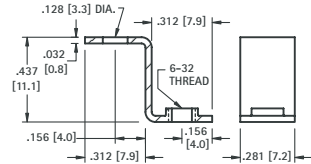
6-32 THREAD



MATERIAL:
.032 (.81) thick Brass,
Tin Plate

CAT. NO. 614

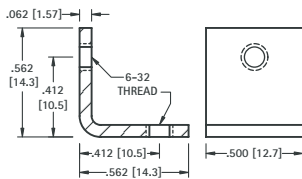
6-32 THREAD



MATERIAL:
.032 (.81) thick Brass,
Tin Plate

CAT. NO. 630

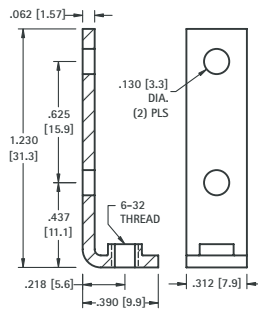
6-32 THREAD



MATERIAL:
.062 (1.57) thick Steel,
Nickel Plate

CAT. NO. 4334

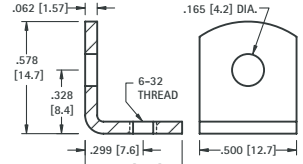
6-32 THREAD



MATERIAL:
.062 (1.57) thick Steel,
Nickel Plate

CAT. NO. 708

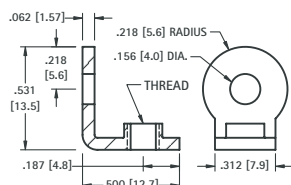
6-32 THREAD



MATERIAL:
.062 (1.57) thick Steel,
Tin Plate

CAT. NO. 617

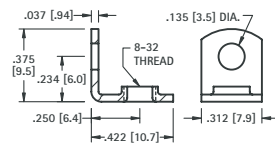
6-32 or 8-32 THREAD



MATERIAL:
.062 (1.57) thick Brass,
Nickel Plate

| CAT. NO. | THREAD |
|----------|--------|
| 4332 | 6-32 |
| 4333 | 8-32 |

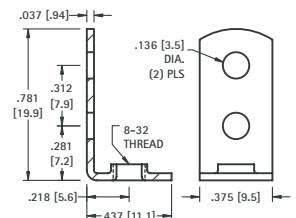
8-32 THREAD



MATERIAL:
.037 (.94) thick Brass,
Tin Plate

CAT. NO. 611

8-32 THREAD



MATERIAL:
.037 (.94) thick Steel,
Tin Plate

CAT. NO. 631