

With fuseholder 5x20 mm, with or without voltage selector (step switch)

Plug removal necessary for fuse replacement



Snap-in mounting from front side without voltage selector



Fuse drawer must be ordered separately (see accessories).



Screw-on mounting from front side with voltage selector



Description

- Panel Mount:
Screw-on version from front or rear side, snap-in version from front side
- 4 Functions:
Appliance Inlet Protection class I, Fuseholder for fuse-links 5 x 20 mm 1- or 2-pole, with or without voltage selector (step switch), Line filter in standard and medical version
- Quick connect terminals or wires
- Alternative: version without line filter [KEA](#)

Approvals

- VDE License Number: 40004665 (FKE, FKF, FKV, FKW)
- UL License Number: E72928 (FKE, FKF, FKV, FKW)

Characteristics

- Rear side mounting for efficient cost-saving assembly
- Suitable for assembly in metal plated plastic housings
- All single elements are already wired
- Plug removal necessary for fuse-link replacement
- The fuse drawer "Fingergrip" can be removed by hand
- For added safety "Extra-Safe" fuse drawers are available
- Fuse drawer meets requirements of medical standard IEC/EN 60601-1
- The fuseholder is accessible from the equipment front
- Qualified for use in equipment according IEC/EN 60950

Other versions on request

- Capacity CX 100 nF

References

[General Product Information](#)

Weblinks

[Approvals](#), [RoHS](#), [CHINA-RoHS](#), [e-Store](#), [SCHURTER-Stock-Check](#), [Distributor-Stock-Check](#)

Technical Data

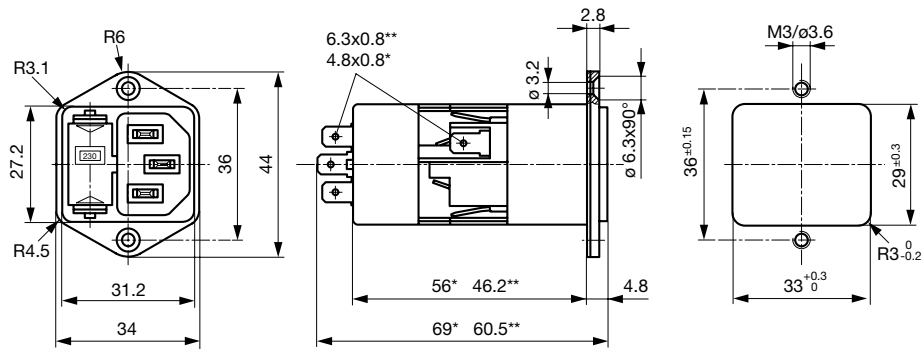
| | |
|---------------------------|--|
| Ratings IEC | 1 - 10A @ Ta 40 °C / 250VAC; 50Hz |
| Ratings UL/CSA | 1 - 10A @ Ta 40 °C / 125VAC; 60Hz |
| Leakage Current | standard < 0.5 mA (250 V / 60Hz) medical < 5 µA (250 V / 60 Hz) |
| Dielectric Strength | > 1.7 kVDC between L-N > 2.7 kVDC between L/N-PE Test voltage (2 sec) |
| Allowable Operation Temp. | -25 °C to 85 °C |
| Climatic Category | 25/085/21 acc. to IEC 60068-1 |
| Degree of Protection | from front side IP 40 acc. to IEC 60529 |
| Protection Class | Suitable for appliances with protection class I acc. to IEC 61140 |
| Terminal | Quick connect terminals or wires |
| Panel Thickness s | Screw-on: max 8mm Mounting screw torque max 0.5 Nm Snap-in: 0.8mm to 3mm |
| Material: Housing | Thermoplastic, black, UL 94V-0 |

| | |
|-----------------------------------|---|
| Appliance-Inlet/-Outlet | C14 acc. to IEC/EN 60320-1, UL 498, CSA C22.2 no. 42 (for cold conditions) pin-temperature 70 °C, 10A, Protection class I |
| Fuseholder | 1 or 2 pole, Shocksafe category PC2 acc. to IEC 60127-6, for fuse-links 5 x 20mm |
| Rated Power Acceptance @ Ta 23 °C | 5 x 20: 2W (1 pole)/ 1.6W (2-pole) per pole |
| Power Acceptance @ Ta > 23°C | Admissible power acceptance at higher ambient temperature see derating curves |
| Voltage selector | optional, step, 3 digits |
| Line Filter | Standard and Medical Version, IEC 60939, IEC 60601-1, UL 1283, UL 544, EN 133 200, CSA C22.2 no. 8 Technical details |
| MTBF | > 1'700'000h acc. to MIL-HB-217 F |

Dimensions

Screw-on mounting from front side

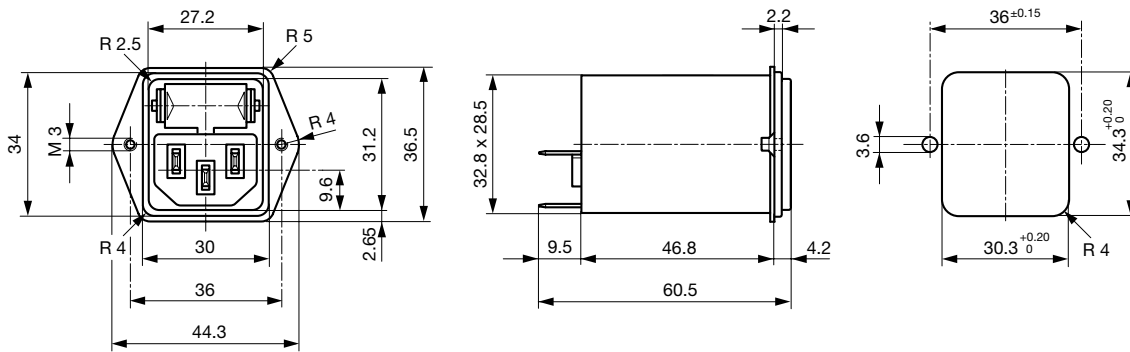
Length  69 mm



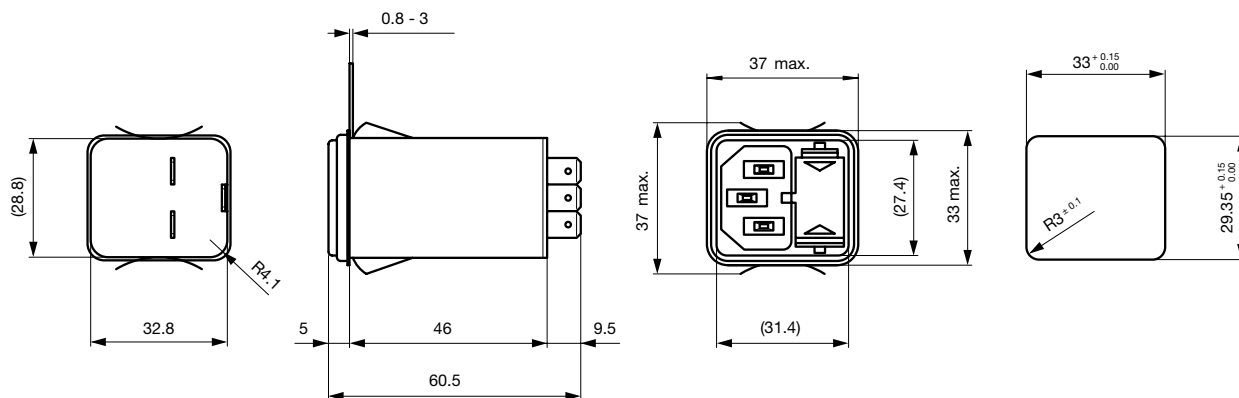
* with voltage selector

** without voltage selector

Screw-on mounting from rear side



Snap-in mounting

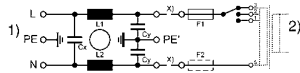


Technical Data of Filter-Components

| Rated Current [A] | Filter-Type | Inductances L [mH] | Capacitance CX [nF] | Capacitance CY [nF] | R [MΩ] |
|-------------------|-----------------------|--------------------|---------------------|---------------------|--------|
| 1 | Standard Version | 2 x 10 | 68 | 2.2 | - |
| 2 | Standard Version | 2 x 4 | 68 | 2.2 | - |
| 4 | Standard Version | 2 x 1.5 | 68 | 2.2 | - |
| 6 | Standard Version | 2 x 0.8 | 68 | 2.2 | - |
| 10 | Standard Version | 2 x 0.3 | 68 | 2.2 | - |
| 1 | Medical Version (M5) | 2 x 10 | 68 | - | 1 |
| 2 | Medical Version (M5) | 2 x 4 | 68 | - | 1 |
| 4 | Medical Version (M5) | 2 x 1.5 | 68 | - | 1 |
| 6 | Medical Version (M5) | 2 x 0.8 | 68 | - | 1 |
| 10 | Medical Version (M5) | 2 x 0.3 | 68 | - | 1 |
| 1 | Medical Version (M80) | 2 x 10 | 68 | 0.47 | 1 |
| 2 | Medical Version (M80) | 2 x 4 | 68 | 0.47 | 1 |
| 4 | Medical Version (M80) | 2 x 1.5 | 68 | 0.47 | 1 |
| 6 | Medical Version (M80) | 2 x 0.8 | 68 | 0.47 | 1 |
| 10 | Medical Version (M80) | 2 x 0.3 | 68 | 0.47 | 1 |

Diagrams

Standard version with fuseholder 1- or 2-pole



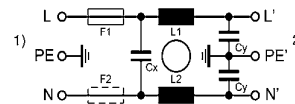
1) Line; 2) Load; x) external connection to be made by the customer

Medical version (M5) with fuseholder 2-pole



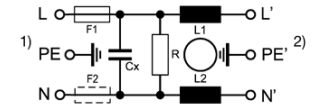
1) Line; 2) Load; x) external connection to be made by the customer

Standard version without voltage selector



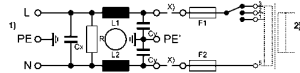
1) Line
2) Load

Medical version (M5) without voltage selector



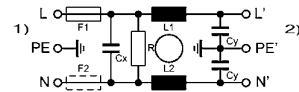
1) Line
2) Load

Medical version (M80) with voltage selector



1) Line; 2) Load; x) external connection to be made by customer

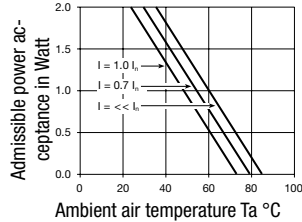
Medical version (M80) without voltage selector



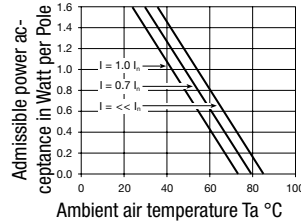
1) Line
2) Load

Derating Curves

1-pole



2-pole

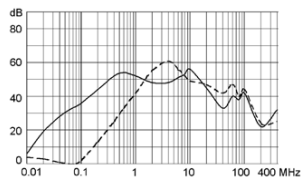


Attenuation Loss

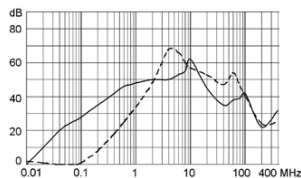
Standard version

--- differential mode ____ common mode

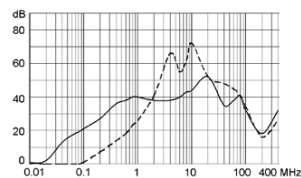
1 A



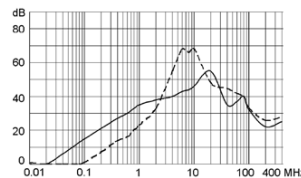
2 A



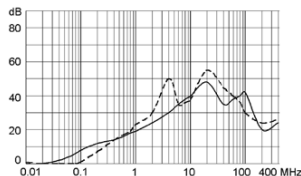
4 A



6 A

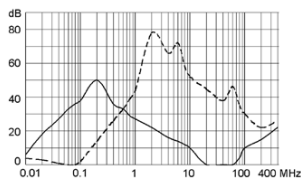


10 A

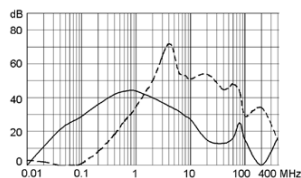


Medical version (M5)

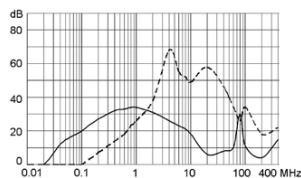
1 A



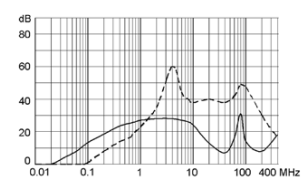
2 A



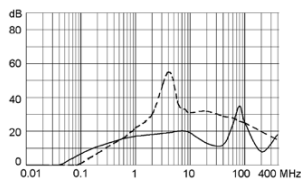
4 A



6 A



10 A



Variants

Fuse drawer must be ordered separately (see accessories).

| Rated Current [A] | Filter-Type | Panel mounting | Mounting side | Fuseholder | Terminal | Voltage selector | Order Number |
|-------------------|------------------|----------------|---------------|------------|-------------------------|------------------|--------------|
| 1 | Standard Version | Screw-on | Front-Side | 1 pole | Quick connect terminals | - | 4301.5011 |
| 1 | Standard Version | Screw-on | Front-Side | 1 pole | Quick connect terminals | 3 digits | 4301.5051 |
| 1 | Standard Version | Screw-on | Front-Side | 2-pole | Quick connect terminals | - | 4301.5001 |
| 1 | Standard Version | Screw-on | Front-Side | 2-pole | Quick connect terminals | 3 digits | 4301.5041 |
| 1 | Standard Version | Screw-on | Rear-Side | 1 pole | Flexible wire 18 AWG | - | 4301.7311 |
| 1 | Standard Version | Screw-on | Rear-Side | 1 pole | Quick connect terminals | - | 4301.7011 |
| 1 | Standard Version | Screw-on | Rear-Side | 2-pole | Flexible wire 18 AWG | - | 4301.7301 |
| 1 | Standard Version | Screw-on | Rear-Side | 2-pole | Quick connect terminals | - | 4301.7001 |
| 2 | Standard Version | Screw-on | Front-Side | 1 pole | Quick connect terminals | - | 4301.5012 |
| 2 | Standard Version | Screw-on | Front-Side | 1 pole | Quick connect terminals | 3 digits | 4301.5052 |
| 2 | Standard Version | Screw-on | Front-Side | 2-pole | Quick connect terminals | - | 4301.5002 |
| 2 | Standard Version | Screw-on | Front-Side | 2-pole | Quick connect terminals | 3 digits | 4301.5042 |
| 2 | Standard Version | Screw-on | Rear-Side | 1 pole | Quick connect terminals | - | 4301.7012 |
| 2 | Standard Version | Screw-on | Rear-Side | 2-pole | Quick connect terminals | - | 4301.7002 |
| 4 | Standard Version | Screw-on | Front-Side | 1 pole | Quick connect terminals | - | 4301.5013 |
| 4 | Standard Version | Screw-on | Front-Side | 1 pole | Quick connect terminals | 3 digits | 4301.5053 |

| Rated Current [A] | Filter-Type | Panel mounting | Mounting side | Fuseholder | Terminal | Voltage selector | Order Number |
|-------------------|-----------------------|----------------|---------------|------------|-------------------------|------------------|--------------|
| 4 | Standard Version | Screw-on | Front-Side | 2-pole | Quick connect terminals | - | 4301.5003 |
| 4 | Standard Version | Screw-on | Front-Side | 2-pole | Quick connect terminals | 3 digits | 4301.5043 |
| 4 | Standard Version | Screw-on | Rear-Side | 1 pole | Quick connect terminals | - | 4301.7013 |
| 4 | Standard Version | Screw-on | Rear-Side | 2-pole | Quick connect terminals | - | 4301.7003 |
| 6 | Standard Version | Screw-on | Front-Side | 1 pole | Quick connect terminals | - | 4301.5014 |
| 6 | Standard Version | Screw-on | Front-Side | 1 pole | Quick connect terminals | 3 digits | 4301.5054 |
| 6 | Standard Version | Screw-on | Front-Side | 2-pole | Quick connect terminals | - | 4301.5004 |
| 6 | Standard Version | Screw-on | Front-Side | 2-pole | Quick connect terminals | 3 digits | 4301.5044 |
| 6 | Standard Version | Screw-on | Rear-Side | 1 pole | Quick connect terminals | - | 4301.7014 |
| 6 | Standard Version | Screw-on | Rear-Side | 2-pole | Quick connect terminals | - | 4301.7004 |
| 10 | Standard Version | Screw-on | Front-Side | 1 pole | Quick connect terminals | - | 4301.5015 |
| 10 | Standard Version | Screw-on | Front-Side | 1 pole | Quick connect terminals | 3 digits | 4301.5055 |
| 10 | Standard Version | Screw-on | Front-Side | 2-pole | Quick connect terminals | - | 4301.5005 |
| 10 | Standard Version | Screw-on | Front-Side | 2-pole | Quick connect terminals | 3 digits | 4301.5045 |
| 10 | Standard Version | Screw-on | Rear-Side | 1 pole | Quick connect terminals | - | 4301.7015 |
| 10 | Standard Version | Screw-on | Rear-Side | 2-pole | Quick connect terminals | - | 4301.7005 |
| 1 | Standard Version | Snap-in | Front-Side | 1 pole | Quick connect terminals | - | 4301.6011 |
| 1 | Standard Version | Snap-in | Front-Side | 2-pole | Quick connect terminals | - | 4301.6001 |
| 2 | Standard Version | Snap-in | Front-Side | 1 pole | Quick connect terminals | - | 4301.6012 |
| 2 | Standard Version | Snap-in | Front-Side | 2-pole | Quick connect terminals | - | 4301.6002 |
| 4 | Standard Version | Snap-in | Front-Side | 1 pole | Quick connect terminals | - | 4301.6013 |
| 4 | Standard Version | Snap-in | Front-Side | 2-pole | Quick connect terminals | - | 4301.6003 |
| 6 | Standard Version | Snap-in | Front-Side | 1 pole | Quick connect terminals | - | 4301.6014 |
| 6 | Standard Version | Snap-in | Front-Side | 2-pole | Quick connect terminals | - | 4301.6004 |
| 10 | Standard Version | Snap-in | Front-Side | 1 pole | Quick connect terminals | - | 4301.6015 |
| 10 | Standard Version | Snap-in | Front-Side | 2-pole | Quick connect terminals | - | 4301.6005 |
| 1 | Medical Version (M5) | Screw-on | Front-Side | 2-pole | Quick connect terminals | - | 4301.5201 |
| 1 | Medical Version (M5) | Screw-on | Front-Side | 2-pole | Quick connect terminals | 3 digits | 4301.5241 |
| 1 | Medical Version (M5) | Screw-on | Rear-Side | 2-pole | Quick connect terminals | - | 4301.7201 |
| 2 | Medical Version (M5) | Screw-on | Front-Side | 2-pole | Quick connect terminals | - | 4301.5203 |
| 2 | Medical Version (M5) | Screw-on | Front-Side | 2-pole | Quick connect terminals | 3 digits | 4301.5243 |
| 2 | Medical Version (M5) | Screw-on | Rear-Side | 2-pole | Quick connect terminals | - | 4301.7203 |
| 4 | Medical Version (M5) | Screw-on | Front-Side | 2-pole | Quick connect terminals | - | 4301.5205 |
| 4 | Medical Version (M5) | Screw-on | Front-Side | 2-pole | Quick connect terminals | 3 digits | 4301.5245 |
| 4 | Medical Version (M5) | Screw-on | Rear-Side | 2-pole | Quick connect terminals | - | 4301.7205 |
| 6 | Medical Version (M5) | Screw-on | Front-Side | 1 pole | Quick connect terminals | - | 4301.5217 |
| 6 | Medical Version (M5) | Screw-on | Front-Side | 2-pole | Quick connect terminals | 3 digits | 4301.5247 |
| 6 | Medical Version (M5) | Screw-on | Rear-Side | 2-pole | Quick connect terminals | - | 4301.7207 |
| 10 | Medical Version (M5) | Screw-on | Front-Side | 2-pole | Quick connect terminals | - | 4301.5209 |
| 10 | Medical Version (M5) | Screw-on | Front-Side | 2-pole | Quick connect terminals | 3 digits | 4301.5249 |
| 10 | Medical Version (M5) | Screw-on | Rear-Side | 2-pole | Quick connect terminals | - | 4301.7209 |
| 1 | Medical Version (M5) | Snap-in | Front-Side | 2-pole | Quick connect terminals | - | 4301.6201 |
| 2 | Medical Version (M5) | Snap-in | Front-Side | 2-pole | Quick connect terminals | - | 4301.6203 |
| 4 | Medical Version (M5) | Snap-in | Front-Side | 2-pole | Quick connect terminals | - | 4301.6205 |
| 6 | Medical Version (M5) | Snap-in | Front-Side | 2-pole | Quick connect terminals | - | 4301.6207 |
| 10 | Medical Version (M5) | Snap-in | Front-Side | 2-pole | Quick connect terminals | - | 4301.6209 |
| 1 | Medical Version (M80) | Screw-on | Rear-Side | 2-pole | Quick connect terminals | - | 4301.7202 |
| 2 | Medical Version (M80) | Screw-on | Front-Side | 2-pole | Quick connect terminals | 3 digits | 4301.5244 |
| 2 | Medical Version (M80) | Screw-on | Rear-Side | 2-pole | Quick connect terminals | - | 4301.7204 |
| 4 | Medical Version (M80) | Screw-on | Front-Side | 2-pole | Quick connect terminals | - | 4301.5206 |
| 4 | Medical Version (M80) | Screw-on | Rear-Side | 2-pole | Quick connect terminals | - | 4301.7206 |
| 6 | Medical Version (M80) | Screw-on | Rear-Side | 2-pole | Quick connect terminals | - | 4301.7208 |
| 10 | Medical Version (M80) | Screw-on | Rear-Side | 2-pole | Quick connect terminals | - | 4301.7200 |
| 4 | Medical Version (M80) | Snap-in | Front-Side | 2-pole | Quick connect terminals | - | 4301.6206 |

Wire length: 150 mm

Packaging unit 10 Pcs

Required Accessory

Description

Fusedrawer 2

Fusedrawer with and without voltage selector insert



| | |
|--|--------------|
| Fingerrip, 2-pole, Voltage selector, 110, 150, 220 | 4301.1014.01 |
| Fingerrip, 2-pole, Voltage selector, 120, 240 | 4301.1014.02 |
| Fingerrip, 2-pole, Voltage selector, 110, 220 | 4301.1014.03 |
| Fingerrip, 2-pole, Voltage selector, 115, 220 | 4301.1014.04 |

...

Accessory



Assorted Covers

Rear Cover

0859.0075



Cord retaining kits

Cord retaining strain reliefs

| | |
|----------------|-----------|
| Flat head, A | 4700.0001 |
| Countersunk, B | 4700.0002 |

Passende Dose

Category / Description

Appliance Outlet



| | |
|---|------|
| IEC appliance outlet F, screw-on mounting, front side, solder /quick connect terminal | 4787 |
| IEC appliance outlet F, screw-on mounting, front side, solder /quick connect terminal | 4788 |
| IEC appliance outlet F oder H, screw-on mounting, front side, solder/PCB/quick connect terminal | 5091 |
| IEC appliance outlet F oder H, screw-on mounting, front side, solder/quick connect terminal | 5092 |

Connector



| | |
|--|---------|
| IEC cord connector C15, rewirable, straight | 0101 |
| IEC cord connector C15A, rewirable, straight | 0102 |
| IEC cord connector C15A, rewirable, straight | 0102-G |
| IEC cord connector C15A, rewirable, angled | 0112 |
| IEC cord connector C13, rewirable, angled | 4012 |
| IEC cord connector C13, rewirable, angled | 4013 |
| IEC cord connector C13, rewirable, straight | 4020 |
| IEC cord connector C13, rewirable, straight | 4021 |
| IEC cord connector C13, rewirable, straight | 4022 |
| IEC cord connector C13, rewirable, angled | 4300-06 |

...