

Switch Language

English

Need Assistance?

- [Contact Us](#)
- [Find a Distributor](#)
- [Order Samples](#)
- [Tech Library](#)

[Printer-friendly page](#)

[Email this page](#)

[Home](#)   [PCB Headers](#)   [Datasheet](#)

**Part Number:** 0022032041

**Status:** Active

**Description:** 2.54mm (.100") Pitch KK® Wire-to-Board Header, Single Row, Vertical, 4 Circuits, PA Polyamide Nylon, Tin (Sn) Plating

**Documents:**

*Note - Please disable browser pop-up blockers for documents on www.molex.com*

- [Drawing \(PDF\)](#)
- [Product Specification PS-10-07 \(PDF\)](#)
- [3D Model](#)
- [Packaging Specification \(PDF\)](#)
- [Related Catalog Page \(PDF\)](#)

**Order Products:**

- [Check Distributor Inventory](#)
- [Add to My Parts](#)
- [Request Samples](#)

**Part Detail: (show all)**

[General](#)   [Physical](#)   [Electrical](#)   [Material Info](#)

**General**

Product Family	PCB Headers
Series	<u>4030</u>
Application	Board-to-Board
Application	Wire-to-Board
Product Name	KK®

**Physical**

Breakaway	No
Circuits (Loaded)	4
Circuits (maximum)	4
Color - Resin	Natural (White)
Durability (mating cycles) min	25 cycles
Flammability	94V-0
Lock to Mating Part	None
Material - Metal	Brass
Material - Plating Mating	Tin
Material - Plating Termination	Tin
Material - Resin	Nylon
Number of Rows	1
Orientation	Vertical
PC Tail Length (in)	0.135 In
PC Tail Length (mm)	3.43 mm
PCB Locator	No
PCB Retention	None
PCB Thickness Recommended (in)	0.062 In
PCB Thickness Recommended (mm)	1.60 mm
Packaging Type	Bag
Pitch - Mating Interface (in)	0.100 In
Pitch - Mating Interface (mm)	2.54 mm
Plating min: Mating (uin)	200
Plating min: Mating (um)	5
Plating min: Termination (uin)	200
Plating min: Termination (um)	5
Polarized to Mating Part	No



**EU RoHS**

**ELV and RoHS Compliant**

**China RoHS**



**Need more information on product compliance?**

Email [productcompliance@molex.com](mailto:productcompliance@molex.com)

Please visit the [Contact Us](#) section for any non-product compliance questions.

Duration at Max. Process Temperature (seconds)	5
Lead-free Process Capability	Wave Capable (TH only)
Max. Cycles at Max. Process Temperature	1
Process Temperature max. C	235

**Search Parts in this Series**

[4030 Series](#)

**Mates With**

[2695](#), [6471](#), [7880](#), [4455](#), [7720](#)

Polarized to PCB	No
Shrouded	No
Stackable	Yes
Surface Mount Compatible (SMC)	No
Temperature Range - Operating	0°C to +75°C
Termination Interface: Style	Through Hole

**Electrical**

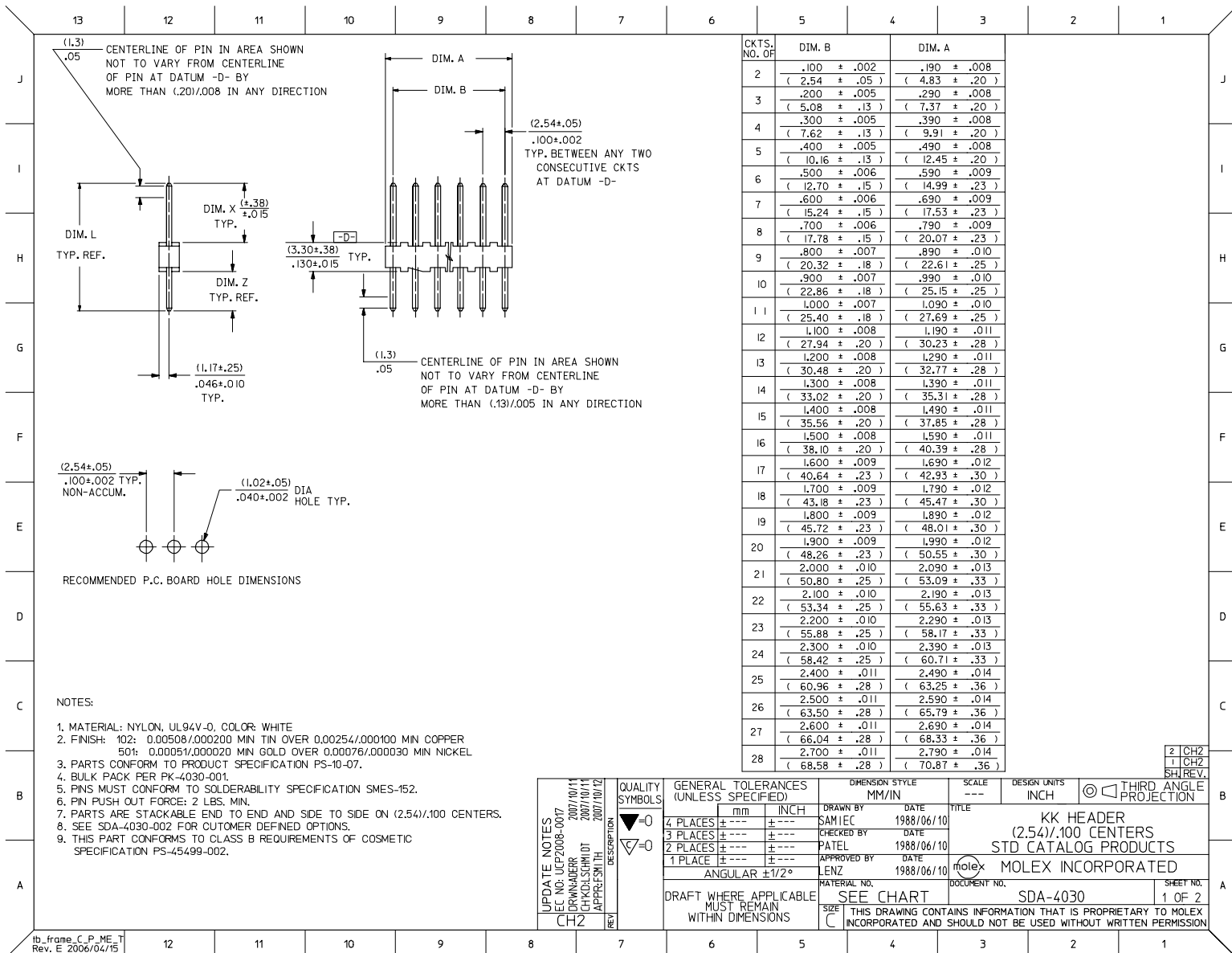
CSA	LR19980
Current - Maximum	4.000 Amp
UL	E29179
Voltage - Maximum	250V

**Material Info**

Old Part Number	A-4030-04A102
-----------------	---------------

**Reference - Drawing Numbers**

Product Specification	PS-10-07
Sales Drawing	SDA-4030



<b>UPDATE NOTES</b> DEC NO: UCP2008-0017 DRAWN BY: ZORWADER 2007/10/11 CHECKED BY: CHACKSCHMIDT 2007/10/11 APPROVED BY: JEFFREY SMITH 2007/10/12 REV:	<b>QUALITY SYMBOLS</b> ◻=0 ◻=0	<b>GENERAL TOLERANCES (UNLESS SPECIFIED)</b> <table border="1"> <tr><th></th><th>mm</th><th>INCH</th></tr> <tr><td>4 PLACES</td><td>± .005</td><td>± .0005</td></tr> <tr><td>3 PLACES</td><td>± .004</td><td>± .0004</td></tr> <tr><td>2 PLACES</td><td>± .003</td><td>± .0003</td></tr> <tr><td>1 PLACE</td><td>± .002</td><td>± .0002</td></tr> </table>		mm	INCH	4 PLACES	± .005	± .0005	3 PLACES	± .004	± .0004	2 PLACES	± .003	± .0003	1 PLACE	± .002	± .0002	<b>DIMENSION STYLE</b> MM/IN	<b>SCALE</b> ---	<b>DESIGN UNITS</b> INCH	<input checked="" type="checkbox"/> THIRD ANGLE PROJECTION
				mm	INCH																
4 PLACES	± .005	± .0005																			
3 PLACES	± .004	± .0004																			
2 PLACES	± .003	± .0003																			
1 PLACE	± .002	± .0002																			
<b>DRAFT WHERE APPLICABLE MUST REMAIN WITHIN DIMENSIONS</b>	<b>DRAWN BY</b> SAMIEC <b>DATE</b> 1988/06/10	<b>CHECKED BY</b> PATEL <b>DATE</b> 1988/06/10	<b>APPROVED BY</b> LENZ <b>DATE</b> 1988/06/10	<b>TITLE</b> KK HEADER (2.54)/.100 CENTERS STD CATALOG PRODUCTS	<b>MATERIAL NO.</b> SDA-4030	<b>DOCUMENT NO.</b> MOLEX INCORPORATED															
		<b>SHEET NO.</b> 1 OF 2	THIS DRAWING CONTAINS INFORMATION THAT IS PROPRIETARY TO MOLEX INCORPORATED AND SHOULD NOT BE USED WITHOUT WRITTEN PERMISSION																		

	13	12	11	10	9	8	7	6	5	4	3	2	1	
	ENG. NO.	PIN NO.	DIM. L	DIM. X	DIM. Z	PACKAGE PER	EDP NO. IN COL NO							
J	A-4030 -NA(102)	2766 -I(102)	.560 (14.22)	.295 (7.49)	.135 (3.43)	PK-4030-001 BULK	1							J
	A-4030 -NA(50I)	2766 -I(50I)	.560 (14.22)	.295 (7.49)	.135 (3.43)	PK-4030-001 BULK	2							
I	A- -	-	( )	( )	( )									I
	A- -	-	( )	( )	( )									
	A- -	-	( )	( )	( )									
	A- -	-	( )	( )	( )									
H														H
G														G
	COLUMN NO. 1		COLUMN NO. 2											
	EDP NO.	ENG. NO.	NO OF DCTS	EDP NO.	ENG. NO.	NO OF DCTS								
	22-03-202I	A-4030-02A(102)	2	22-10-202I	A-4030-02A(50I)	2								
	22-03-203I	A-4030-03A(102)	3	22-10-203I	A-4030-03A(50I)	3								
F	22-03-204I	A-4030-04A(102)	4	22-10-204I	A-4030-04A(50I)	4								F
	22-03-205I	A-4030-05A(102)	5	22-10-205I	A-4030-05A(50I)	5								
	22-03-206I	A-4030-06A(102)	6	22-10-206I	A-4030-06A(50I)	6								
	22-03-207I	A-4030-07A(102)	7	22-10-207I	A-4030-07A(50I)	7								
	22-03-208I	A-4030-08A(102)	8	22-10-208I	A-4030-08A(50I)	8								
	22-03-209I	A-4030-09A(102)	9	22-10-209I	A-4030-09A(50I)	9								
E	22-03-210I	A-4030-10A(102)	10	22-10-210I	A-4030-10A(50I)	10								E
	22-03-211I	A-4030-11A(102)	11	22-10-211I	A-4030-11A(50I)	11								
	22-03-212I	A-4030-12A(102)	12	22-10-212I	A-4030-12A(50I)	12								
	22-03-213I	A-4030-13A(102)	13	22-10-213I	A-4030-13A(50I)	13								
	22-03-214I	A-4030-14A(102)	14	22-10-214I	A-4030-14A(50I)	14								
	22-03-215I	A-4030-15A(102)	15	22-10-215I	A-4030-15A(50I)	15								
D	22-03-216I	A-4030-16A(102)	16	22-10-216I	A-4030-16A(50I)	16								D
	22-03-217I	A-4030-17A(102)	17	22-10-217I	A-4030-17A(50I)	17								
	22-03-218I	A-4030-18A(102)	18	22-10-218I	A-4030-18A(50I)	18								
	22-03-219I	A-4030-19A(102)	19	22-10-219I	A-4030-19A(50I)	19								
	22-03-220I	A-4030-20A(102)	20	22-10-220I	A-4030-20A(50I)	20								
	22-03-221I	A-4030-21A(102)	21	22-10-221I	A-4030-21A(50I)	21								
C	22-03-222I	A-4030-22A(102)	22	22-10-222I	A-4030-22A(50I)	22								C
	22-03-223I	A-4030-23A(102)	23	22-10-223I	A-4030-23A(50I)	23								
	22-03-224I	A-4030-24A(102)	24	22-10-224I	A-4030-24A(50I)	24								
	22-03-225I	A-4030-25A(102)	25	22-10-225I	A-4030-25A(50I)	25								
	22-03-226I	A-4030-26A(102)	26	22-10-226I	A-4030-26A(50I)	26								
	22-03-227I	A-4030-27A(102)	27	22-10-227I	A-4030-27A(50I)	27								
	22-03-228I	A-4030-28A(102)	28	22-10-228I	A-4030-28A(50I)	28								
B														B
A														A
	UPDATE TITLE BLOCK REC NO: UCP2008-0017 DRAWN BY: 2007/10/11 CHKD BY: CHZ APPROVED BY: 2007/10/11		QUALITY SYMBOLS ▽=0 ▽=0	GENERAL TOLERANCES (UNLESS SPECIFIED) mm INCH 4 PLACES ±--- ±--- 3 PLACES ±--- ±--- 2 PLACES ±--- ±--- 1 PLACE ±--- ±--- ANGULAR ±1/2°		DIMENSION STYLE IN/MM DRAWN BY: DATE: 1993/07/15 CHECKED BY: DATE: 1993/07/15 APPROVED BY: DATE: 1993/07/15 LENZ		SCALE --- INCH	DESIGN UNITS INCH	THIRD ANGLE PROJECTION		TITLE KK HEADER (2.54)/.100 CENTERS STD CATALOG PRODUCTS MOLEX INCORPORATED		
	DRAFT WHERE APPLICABLE MUST REMAIN WITHIN DIMENSIONS		MATERIAL NO. SEE CHART		DOCUMENT NO. SDA-4030		SHEET NO. 2 OF 2		THIS DRAWING CONTAINS INFORMATION THAT IS PROPRIETARY TO MOLEX INCORPORATED AND SHOULD NOT BE USED WITHOUT WRITTEN PERMISSION					
	ib_frame_C_P_ME_T Rev. E 2006/04/15	12	11	10	9	8	7	6	5	4	3	2	1	