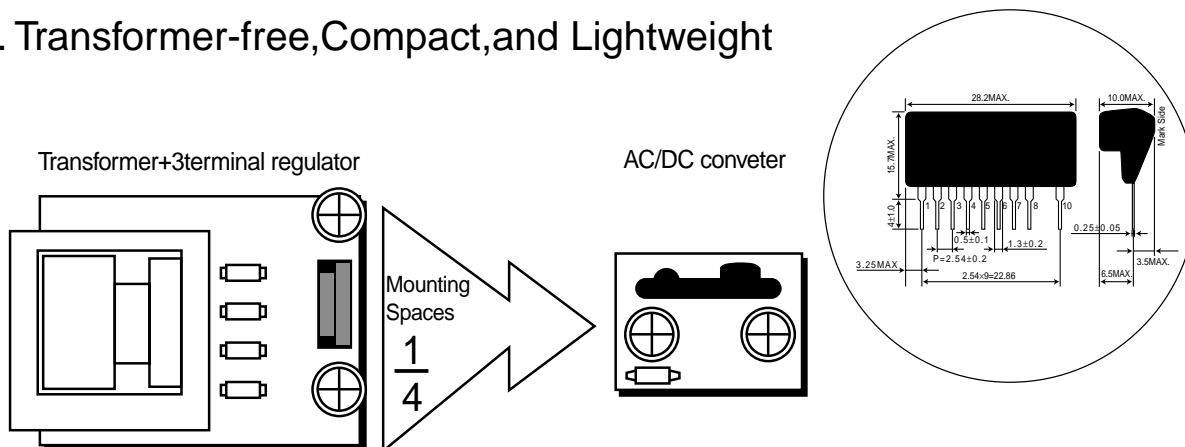


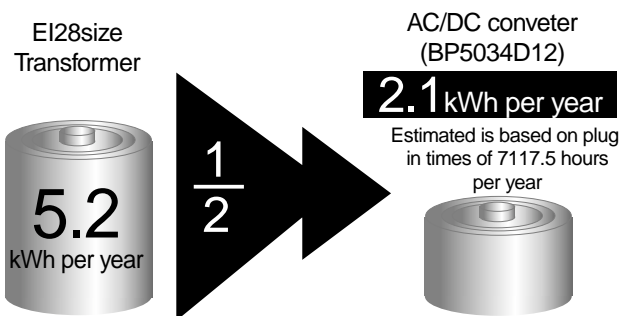
# AC/DC converter characteristic

ROHM's AC/DC converter is a power module that can gain direct-current voltage with a few external components from commercial power supply.

## 1. Transformer-free, Compact, and Lightweight



## 2. Transformer-free, Power Saving on Stand-by "1/2"

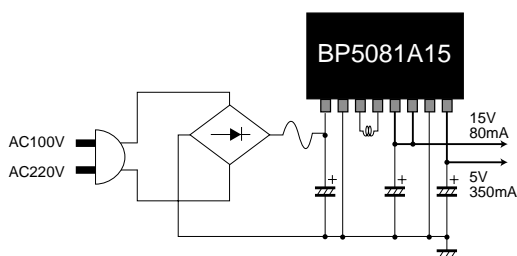


Estimation is based on 100VAC converted to 12VDC with 0.02A current.

part No.	Transformer Power consumption	AC/DC converter Power consumption	Condition
BP5034D12	16.2kWh per year	8.3kWh per year	EI28 size transformer AC100→12V, 0.1A
BP5062	18.1kWh per year	10.2kWh per year	EI52 size transformer AC100→12V, 0.5A
BP5035	8.2kWh per year	4.1kWh per year	EI35 size transformer AC100→12V, 0.2A
BP5061	10.7kWh per year	6.2kWh per year	EI42 size transformer AC100→12, 0.3A

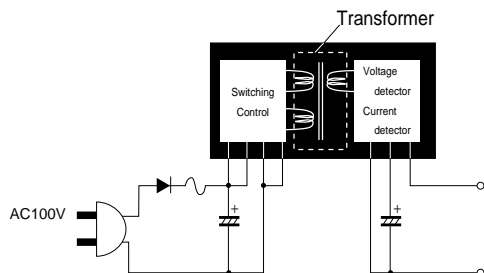
(7117.5 hours per annum)

## 3. 2-output types perfect for driving logic, and power circuit.



Part No.	Input(V)	Output1 (V/mA)	Output2 (V/mA)
BP5081A15	DC113 ~170	5 350	15 80
BP5086A24S		4 1	24 220
BP5085-15	DC226 ~358	5 350	15 80

## 4. Built-in Transformer, Isolation AC/DC converter



### Recommended Application

- Applications used by connecting other sets with code or cable
- Set with sensor

### Notes

- No technical content pages of this document may be reproduced in any form or transmitted by any means without prior permission of ROHM CO.,LTD.
- The contents described herein are subject to change without notice. The specifications for the product described in this document are for reference only. Upon actual use, therefore, please request that specifications to be separately delivered.
- Application circuit diagrams and circuit constants contained herein are shown as examples of standard use and operation. Please pay careful attention to the peripheral conditions when designing circuits and deciding upon circuit constants in the set.
- Any data, including, but not limited to application circuit diagrams information, described herein are intended only as illustrations of such devices and not as the specifications for such devices. ROHM CO.,LTD. disclaims any warranty that any use of such devices shall be free from infringement of any third party's intellectual property rights or other proprietary rights, and further, assumes no liability of whatsoever nature in the event of any such infringement, or arising from or connected with or related to the use of such devices.
- Upon the sale of any such devices, other than for buyer's right to use such devices itself, resell or otherwise dispose of the same, no express or implied right or license to practice or commercially exploit any intellectual property rights or other proprietary rights owned or controlled by ROHM CO., LTD. is granted to any such buyer.
- Products listed in this document use silicon as a basic material.  
Products listed in this document are no antiradiation design.

The products listed in this document are designed to be used with ordinary electronic equipment or devices (such as audio visual equipment, office-automation equipment, communications devices, electrical appliances and electronic toys).

Should you intend to use these products with equipment or devices which require an extremely high level of reliability and the malfunction of which would directly endanger human life (such as medical instruments, transportation equipment, aerospace machinery, nuclear-reactor controllers, fuel controllers and other safety devices), please be sure to consult with our sales representative in advance.

#### About Export Control Order in Japan

Products described herein are the objects of controlled goods in Annex 1 (Item 16) of Export Trade Control Order in Japan.

In case of export from Japan, please confirm if it applies to "objective" criteria or an "informed" (by MITI clause) on the basis of "catch all controls for Non-Proliferation of Weapons of Mass Destruction.