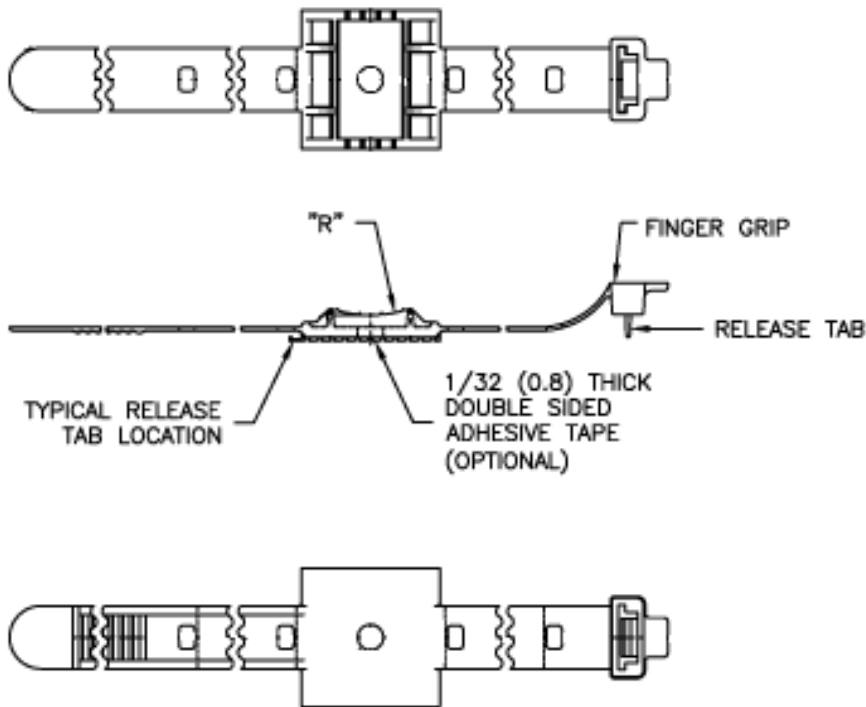


See "Part Drawing" for Details



Part Number

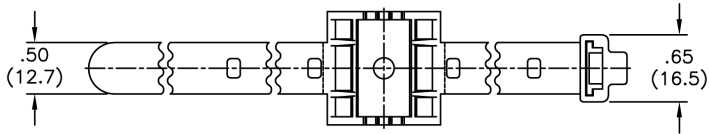
Description

[UMS-24-45](#)

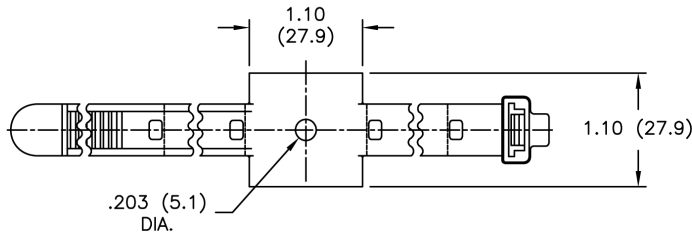
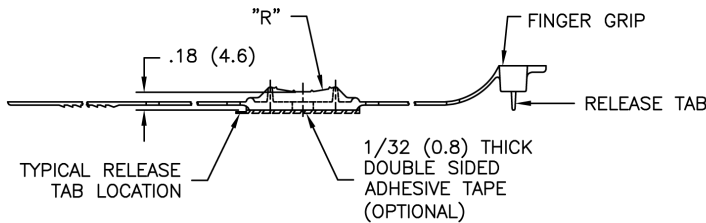
Strap,Adj,Screw Mnt,Blk,1.5"Max Hld



PART NO.		MAXIMUM BUNDLE DIA.	RADIUS "R"
W/O TAPE	W/TAPE		
UMS-16-45	UMS-16-45A-RT	1 (25.4)	1/2 (12.7)
UMS-24-45	UMS-24-45A-RT	1-1/2 (38.1)	3/4 (19.1)
UMS-32-45	UMS-32-45A-RT	2 (50.8)	1 (25.4)



RICHCO RIVET NO.	PANEL THICKNESS RANGE
SR5045	0.000 TO 0.018
SR5055	0.018 TO 0.058
SR5065	0.058 TO 0.097
SR5075	0.097 TO 0.137
SR5085	0.137 TO 0.176
SR5095	0.176 TO 0.215
SR5105	0.215 TO 0.255



NOTES:

1. MATERIAL: NYLON 6/6 (RMS-45).
2. COLOR: BLACK.
3. FOR MOUNTING USE SNAP RIVETS "SR-SERIES", #6 SCREW OR ACRYLIC ADHESIVE TAPE (RMS-15).

TITLE: UNIVERSAL MOUNTING STRAP		DWG IN IN (MM)	FINAL	QR																				
TOLERANCES UNLESS NOTED .XX=±.010 .XXX=±.005 FRAC=±1/64 ANG=±1°	FILE # UMS MAT'L: SEE NOTES RE: RICHCO, INC.	DWN: P.B. DT: 01-18-95	APP: RICHCO INC.	PART # SEE TABLE																				
<table border="1"> <thead> <tr> <th>REV</th> <th>DESCRIPTION</th> <th>ENGR</th> <th>DATE</th> </tr> </thead> <tbody> <tr> <td>D</td> <td>SEE CO 200171 FOR CHANGES</td> <td>SK</td> <td>04.29.08</td> </tr> <tr> <td>C</td> <td>SEE ECN #551 FOR CHANGES</td> <td>SM</td> <td>01.07.03</td> </tr> <tr> <td>B</td> <td>CHANGED TAPE NOTE AND FILE NO.</td> <td>SM</td> <td>12.11.01</td> </tr> <tr> <td>A</td> <td>CHANGED RMS-73 TO RMS-45</td> <td>JB</td> <td>04.22.96</td> </tr> </tbody> </table>	REV	DESCRIPTION	ENGR	DATE	D	SEE CO 200171 FOR CHANGES	SK	04.29.08	C	SEE ECN #551 FOR CHANGES	SM	01.07.03	B	CHANGED TAPE NOTE AND FILE NO.	SM	12.11.01	A	CHANGED RMS-73 TO RMS-45	JB	04.22.96	PRINT TYPE CA			
REV	DESCRIPTION	ENGR	DATE																					
D	SEE CO 200171 FOR CHANGES	SK	04.29.08																					
C	SEE ECN #551 FOR CHANGES	SM	01.07.03																					
B	CHANGED TAPE NOTE AND FILE NO.	SM	12.11.01																					
A	CHANGED RMS-73 TO RMS-45	JB	04.22.96																					