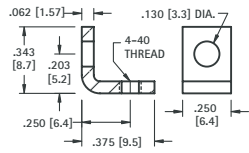


THREADED MOUNTING BRACKETS

THREADED MOUNTING BRACKETS

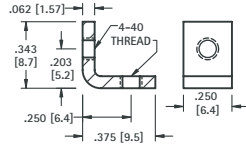
4-40 THREAD



MATERIAL:
.062 (1.57) thick Steel,
Zinc Plate

CAT. NO. 612

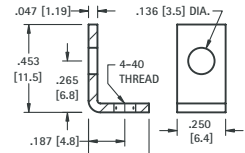
4-40 THREAD



MATERIAL:
.062 (1.57) thick Steel,
Zinc Plate

CAT. NO. 621

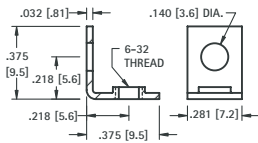
4-40 THREAD



MATERIAL:
.047 (1.19) thick Brass,
Tin Plate

CAT. NO. 616

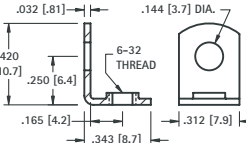
6-32 THREAD



MATERIAL:
.032 (.81) thick Brass,
Nickel Plate

CAT. NO. 634

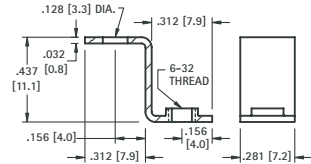
6-32 THREAD



MATERIAL:
.032 (.81) thick Brass,
Tin Plate

CAT. NO. 614

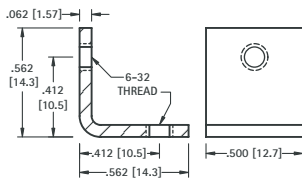
6-32 THREAD



MATERIAL:
.032 (.81) thick Brass,
Tin Plate

CAT. NO. 630

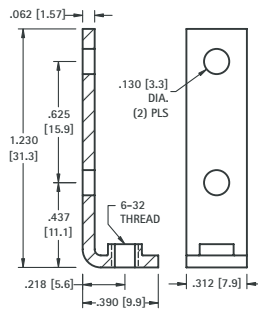
6-32 THREAD



MATERIAL:
.062 (1.57) thick Steel,
Nickel Plate

CAT. NO. 4334

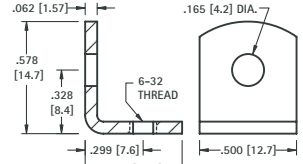
6-32 THREAD



MATERIAL:
.062 (1.57) thick Steel,
Nickel Plate

CAT. NO. 708

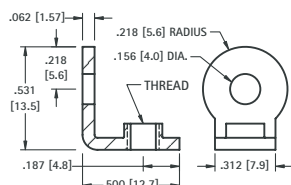
6-32 THREAD



MATERIAL:
.062 (1.57) thick Steel,
Tin Plate

CAT. NO. 617

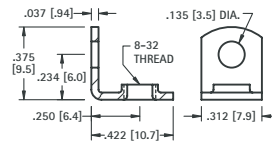
6-32 or 8-32 THREAD



MATERIAL:
.062 (1.57) thick Brass,
Nickel Plate

CAT. NO.	THREAD
4332	6-32
4333	8-32

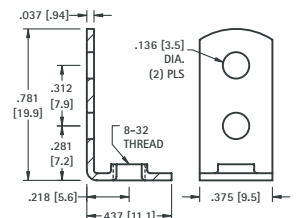
8-32 THREAD



MATERIAL:
.037 (.94) thick Brass,
Tin Plate

CAT. NO. 611

8-32 THREAD



MATERIAL:
.037 (.94) thick Steel,
Tin Plate

CAT. NO. 631