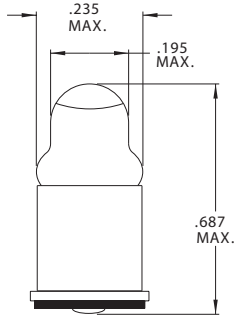


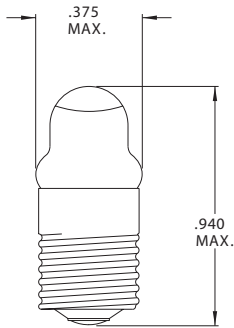


GTL-1 3/4 Midget Flange Base Lens End



| Part Number | Design Voltage | Amps | Spot Characteristic | Life Hours | Filament Type |
|-------------|----------------|------|---------------------|------------|---------------|
| CM252 | 2.5 | .35 | A* | 10,000 | C-2R |

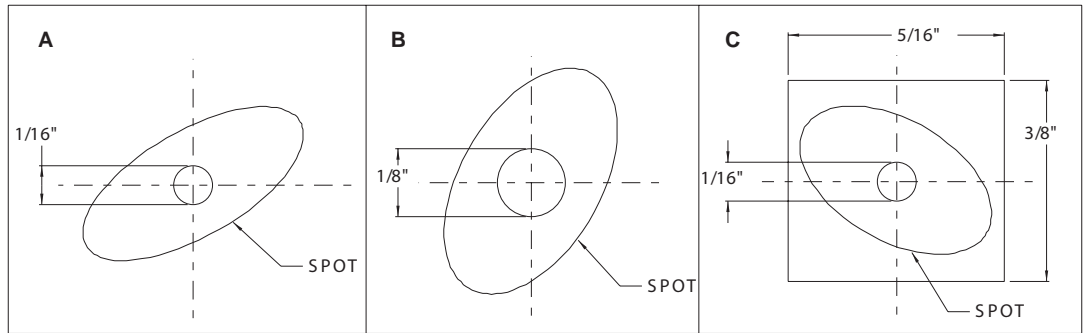
GTL-3 Miniature Screw Base Lens End



| Part Number | Design Voltage | Amps | Spot Characteristic | Life Hours | Filament Type |
|-------------|----------------|------|---------------------|------------|---------------|
| CM112 | 1.20 | .22 | None | 5 | S-2 |
| CM113 | 1.30 | .22 | None | 15 | S-2 |
| CM222 | 2.25 | .25 | None | 5 | C-2R |
| CM243 | 2.33 | .27 | None | 10 | C-6 |
| CM246 | 3.80 | .22 | None | 20 | C-6 |

Spot Characteristics

Spots produced by lens end caps vary in shape from elliptical to round. Their respective spot characteristics are defined as follows with the lamp .375" from tip to surface. The specific spot shape will be defined within the limits shown.



- A. 750 footcandles minimum over a 1/16" DIA. circle centered on the axis of the lamp.
- B. 750 footcandles minimum over a 1/8" DIA. circle centered on the axis of the lamp.
- C. 750 footcandles minimum over a 1/16" DIA. circle centered on the axis of the lamp.

Chicago Miniature Lamp reserves the right to make specification revisions that enhance the design and/or performance of the product