

EXECUTIVE FOOTSWITCH



Executive Footswitch

Environmental Ratings:

EN 60529 Degree of Protection IP20

Key Benefits

Mechanical Interlock-prevents both circuits from being operated at the same time. The operating principle is the same as that described for the [Lektro-Lok](#) foot switch. Modern styled die cast cover, painted medium gray finish. Complete with a full nonskid base pad. All wiring connections are made internally so only a single cord must be brought out of the foot switch eliminating costly wire harness assemblies.

Size: 4-3/4" x 4-1/4" x 1-9/16"

Weight: 1-1/4 lbs.



Executive Twin

SPECIFICATIONS

(Special variations are available to the O.E.M. on special order on the models listed below)

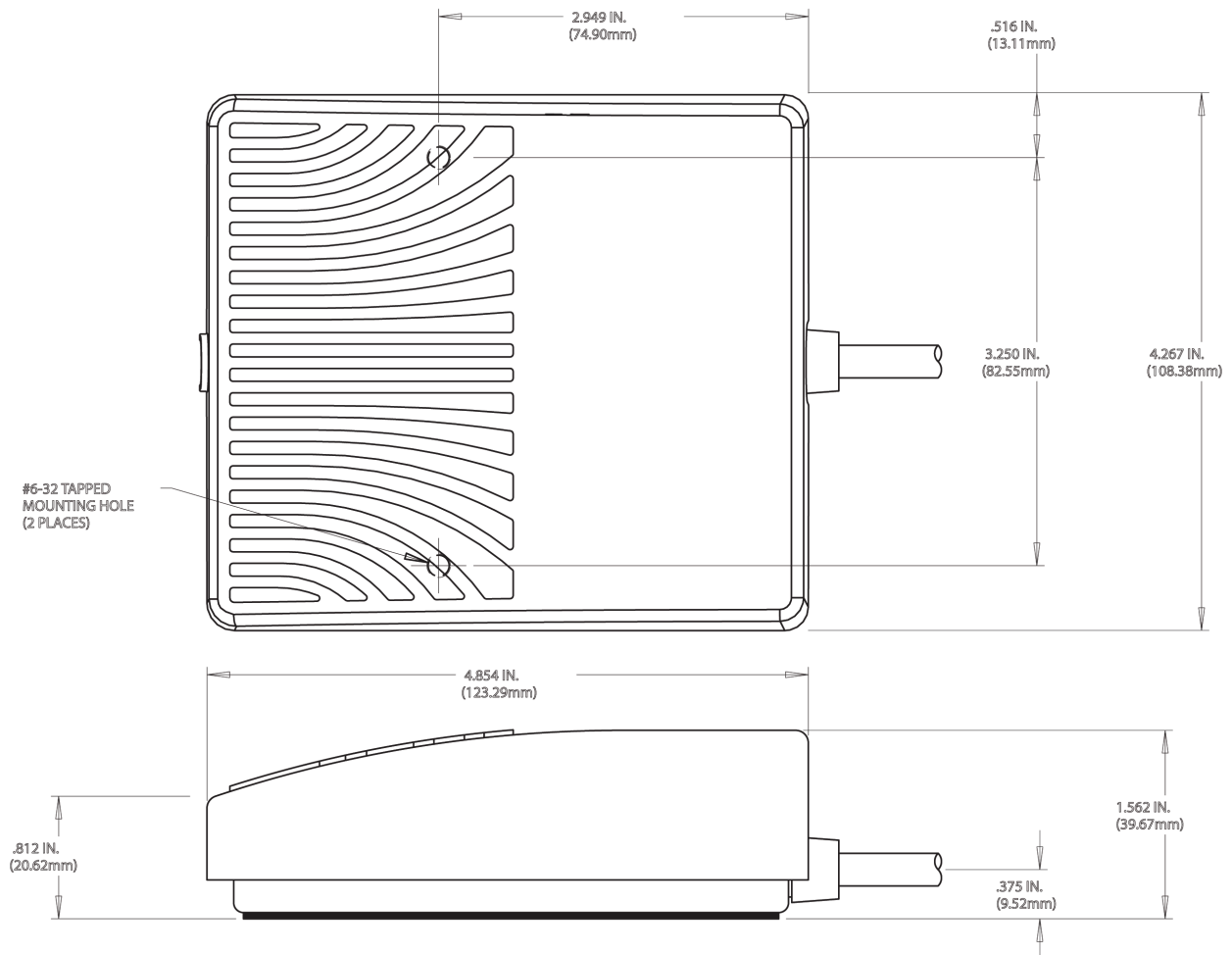
⚠ WARNING

	CATALOG NUMBER	DESCRIPTION	CIRCUIT	FORM	ELECTRICAL RATINGS
C UL US	72	Momentary	Each Side SPDT	C	10 A 125-250 VAC
C UL US	74	Momentary	Each Side DPDT	C	1/2 H.P. 125-250 VAC

BOLD COPY INDICATES STOCK ITEM

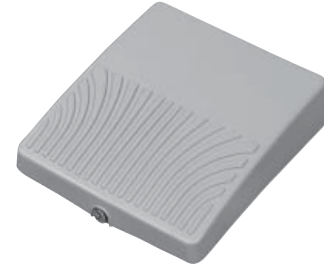
Executive Model

NOTE: ALL DIMENSIONS ARE FOR REFERENCE ONLY.



EN 60529 Degree of Protection IP20 (IP68 Upon Request)

Motion Control Device
ROCKER ACTION LOW PROFILE DESIGN



Materials of Construction:

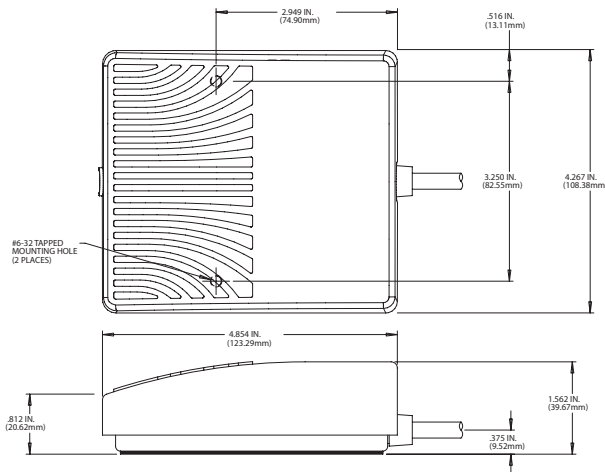
- Cover is a medium gray Die Cast Zinc material
- Mechanical Interlock—prevents both circuits from being operated at the same time
- Operates on the teeter-totter principle
 Pressure on one side opens or closes line, release of pressure returns switch to normal off position, pressure on other side opens or closes circuit, independent of first

Features & Benefits:

- Non-skid Base pad
- Both sides can be wired normally open or normally closed
- All wiring connections are made internally with only a single cord being brought out
- Eliminates costly harness assemblies
- Offers real economy

Options:

- Twin, Triple, Quad & Quint versions available
- Heavy gauge steel guard available (See "Accessories - Guards" on page 74 & 75 for details)



Size (HxWxD):	1.625 x 4.28 x 4.75 In.
Weight:	1.25 lbs.

⚠ WARNING SEE PRODUCT WARNING ON PAGE 8

SPECIFICATIONS (Special variations are available to the O.E.M. on special order on the models listed below)

AGENCY APPROVALS	EN 60529 Degree of Protection	CATALOG NUMBER	DESCRIPTION	CIRCUIT	FORM	ELECTRICAL RATINGS
US	IP20	72	Momentary	SPDT Each Side	C	10 A 125-250 VAC
US	IP20	74	Momentary	SPDT Each Side	C	1/2 H.P. 125-250 VAC