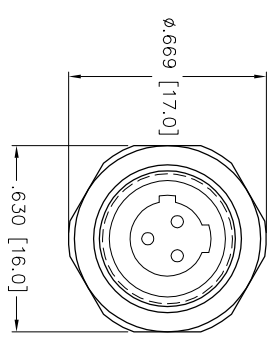
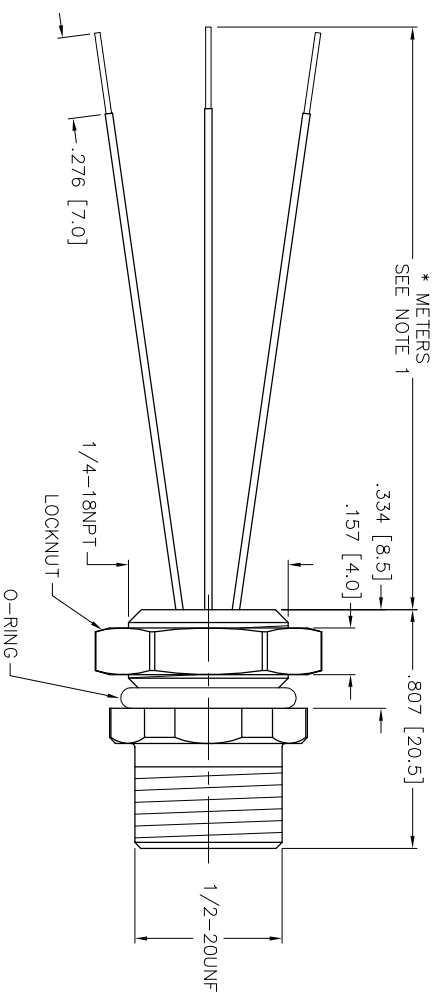


| SPECIFICATIONS | |
|-------------------------------|----------------------------------|
| CONTACT CARRIER MATERIAL | NYLON |
| CONTACT MATERIAL/PLATING | GOLD-PLATED BRASS |
| RATED CURRENT [A] | 4.0 A |
| RATED VOLTAGE [V] | 250 V |
| HOUSING MATERIAL | NICKEL-PLATED BRASS |
| CONDUCTOR INSULATION MATERIAL | PVC |
| NUMBER OF CONDUCTORS [AWG] | 3x22 AWG |
| TEMPERATURE RATING | -30°C to +80°C (-22°F to +176°F) |
| PROTECTION CLASS | MEETS NEMA 1,3,4,6P AND IEC IP67 |



| CABLE LENGTH | TOLERANCE |
|--------------|-----------------------------------------------------------------------------|
| ALL LENGTHS | + 4% (OR 50mm) OF LENGTH - 0% (OR 0mm) OF LENGTH WHICHEVER IS GREATER |
| STRIP LENGTH | TOLERANCE |
| 0-7mm | ±0.5mm |
| 8-20mm | ±1.0mm |
| 30-49mm | ±2.0mm |
| 50-69mm | ±3.0mm |
| 70-109mm | ±4.0mm |
| OVER 109mm | ±5.0mm |

NOTES:

1. "*" INDICATES LEAD LENGTH IN METERS. CONTACT TURCK TO ORDER SPECIFIC LENGTHS.

| | | | | | |
|-----|--------------------------|-----|----------|-------|---------|
| A | UPDATE TO 777# AND SPECS | JBU | 05/08/02 | T5382 | ECO NO. |
| REV | DESCRIPTION | BY | DATE | | |

| | | | | | | | |
|--------------------|--|----------------------------------------------|--|--------------------------------------------------------------------------------------------------------|--|-----------------------------------------------------------------------------------------------------------------------------------------------------------------------------------------------------|--|
| RELATED DOCUMENTS | | 3RD ANGLE PROJECTION | | THIS DOCUMENT IS PROPERTY OF TURCK INC. USE OF THIS DOCUMENT WITHOUT WRITTEN PERMISSION IS PROHIBITED. | | TURCK inc <i>High Technology Sensors and Automation Controls</i> 3000 CAMPUS DRIVE MINNEAPOLIS, MN 55441 1-800-544-7769 (763) 553-7300 (763) 553-0708 fax turck.com | |
| MATERIAL | | TOLERANCES UNLESS OTHERWISE SPECIFIED | | DATE 05/08/02 | | DESCRIPTION | |
| SEE SPECIFICATIONS | | | | SCALE 1=.7 | | FSB 3-* /18.25 | |
| FINISH | | ALL MILLIMETER DIMENSIONS ARE REFERENCE ONLY | | UNIT OF MEASUREMENT | | IDENTIFICATION NO. | |
| SEE SPECIFICATIONS | | | | INCH [MILLIMETER] | | | |
| | | DO NOT SCALE THIS DRAWING | | | | FILE: MICRO-R\777001033 | |
| | | | | | | SHEET 1 OF 1 | |

SOURCE DRAWING - FOR REFERENCE ONLY