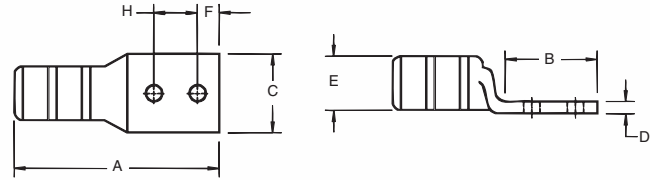


# Connectors for Copper Conductor

## Two-Hole Lugs — Long Barrel 600V to 35KV

**Material:** High-Conductivity Wrought Copper

**Finish:** Electro Tin Plate



**Peep Holes Available!**  
Add suffix **-PH**



Color-Keyed® Compression

CAT. NO.	CODE	WIRE SIZE		DIMENSIONS (IN.)							DIE CODE	DIE COLOR	
		FLEX CLASS	G, H, I, K, M†	BOLT SIZE	A	B	C	D	E	F			H
54801BE	#14-10 AWG			¼	1.86	1.19	.50	.05	.20	¼	⅝	ERG2002	YELLOW
256-31426-3	#14-10 AWG			#10	2.00	1.25	.37	.07	.20	¼	⅝	ERG2002	YELLOW
256-31426-3SPH	#14-10 AWG			#10	2.00	1.25	.37	.07	.20	⅞	⅝-¾	ERG2002	YELLOW
256-30695-1298	#14-10 AWG			¼	1.89	1.22	.50	.05	.20	¼	⅝	ERG2002	YELLOW
256-30695-1730	#14-10 AWG			¼	1.98	1.31	.50	.05	.20	¼	⅝-¾	ERG2002	YELLOW
54850BE	#8 AWG	37/24 = 14.9 kcmil		¼	2.19	1.89	.42	.07	.26	¼	⅝	21	RED
54851BE	#8 AWG	#8 Weld		¼	2.31	1.29	.47	.06	.26	¼	⅝	21	RED
256-30695-1157	#8 AWG			⅜	3.00	2.10	.56	.06	.26	⅝	1	21	RED
54852BE	#6 AWG			¼	2.28	1.28	.44	.08	.30	¼	⅝	24	BLUE
256-30695-1014	#6 AWG			¼	2.63	1.63	.43	.08	.30	¼	1	24	BLUE
256-30695-1225	#6 AWG	61/24 = 24.6 kcmil		¼	2.43	1.43	.43	.08	.30	¼	⅝	24	BLUE
256-30695-1158	#6 AWG	#6 Weld		⅜	2.93	1.93	.59	.06	.30	⅝	1	24	BLUE
256-30695-868	#6 AWG			½	4.18	3.00	.88	.11	.30	½	1¼	24	BLUE
54854BE	#4 AWG			¼	2.31	1.19	.52	.10	.37	¼	⅝	29	GRAY
256-30695-1246	#4 AWG			¼	2.31	1.31	.56	.09	.37	¼	⅝	29	GRAY
256-30695-1015	#4 AWG	91/24 = 36.7 kcmil		¼	2.88	1.88	.58	.09	.37	⅝	1	29	GRAY
256-30695-1337	#4 AWG	#4 Weld		⅝	2.75	1.75	.56	.10	.37	⅞	1	29	GRAY
256-30695-1159	#4 AWG			⅜	3.13	1.98	.59	.09	.37	⅝	1	29	GRAY
256-30695-733	#4 AWG			½	4.18	3.00	.88	.09	.37	½	1¼	29	GRAY
256-30695-1016	#2-3 AWG			¼	3.06	1.88	.67	.09	.41	⅝	1	33	BROWN
54855BE	#2-3 AWG			¼	2.43	1.28	.59	.11	.41	¼	⅝	33	BROWN
256-30695-1300	#2-3 AWG			¼	2.63	1.35	.68	.11	.41	¼	⅝	33	BROWN
54856BE	#2-3 AWG			⅝	2.78	1.63	.59	.11	.41	⅝	⅝	33	BROWN
54810BE	#2-3 AWG	125/24 = 50.4 kcmil		⅜	3.80	2.57	.59	.11	.41	⅝	1¼	33	BROWN
256-30695-1160	#2-3 AWG			⅝	3.08	1.94	.59	.11	.41	⅝	1	33	BROWN
256-30695-869	#2-3 AWG			½	4.02	2.88	.75	.09	.41	⅝	1¼	33	BROWN
54811BE	#2-3 AWG			½	4.28	3.00	.88	.11	.41	½	1¼	33	BROWN
54809BE	#1 AWG			¼	2.88	1.19	.67	.11	.47	¼	⅝	37	GREEN
54812BE	#1 AWG	150/24 = 60.5 kcmil		¼	2.75	1.40	.67	.11	.47	¼	⅝	37	GREEN
54858BE	#1 AWG	175/24 = 70.6 kcmil,		⅝	2.97	1.63	.67	.11	.47	⅝	⅝	37	GREEN
256-30695-1161	#1 AWG	#2 Weld		⅜	3.30	1.98	.67	.11	.47	⅝	1	37	GREEN
54857BE	#1 AWG			½	4.43	3.00	.88	.11	.47	½	1¼	37	GREEN
256-30695-1018	1/0 AWG			¼	3.63	1.88	.75	.13	.52	⅝	1	42	PINK
256-30695-1018P	1/0 AWG			¼	3.63	1.88	.75	.13	.52	⅝	1	42	PINK
54859BE	1/0 AWG			¼	2.63	1.19	.75	.13	.52	¼	⅝	42	PINK
54813BE	1/0 AWG			¼	2.71	1.38	.75	.13	.52	¼	⅝	42	PINK
54860BE	1/0 AWG	225/24 = 90.8 kcmil		⅝	2.97	1.63	.75	.13	.52	⅝	⅝	42	PINK
256-30695-1162P	1/0 AWG			⅜	3.25	1.98	.75	.13	.52	⅝	1	42	PINK
256-30695-1162	1/0 AWG			⅜	3.23	1.93	.75	.13	.52	⅝	1	42	PINK
256-30695-593	1/0 AWG			½	4.33	3.00	.75	.13	.52	⅝	1¼	42	PINK

† Contact Technical Services for specific stranding listings

Tooling: pp. B76-B92 Die Selector Chart: pp. B93-B95

United States  
Tel: 901.252.8000  
800.816.7809  
Fax: 901.252.1354

Canada  
Tel: 450.347.5318  
Fax: 450.347.1976

Technical Services  
Tel: 888.862.3289

**Thomas & Betts**  
www.tnb.com