

Cord retaining strain relieve



4700.00XX



0888.0021

**Description**

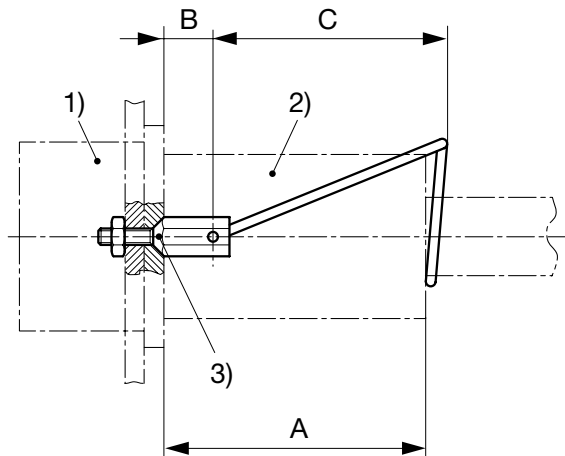
- Front-side:  
Screw-on from front side
- 1 Function:  
Protection against accidental disconnection of the plug

**References**

[General Product Information](#)

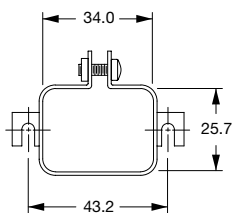
**Weblinks**

[Approvals](#), [RoHS](#), [CHINA-RoHS](#), [e-Store](#), [SCHURTER-Stock-Check](#), [Distributor-Stock-Check](#)

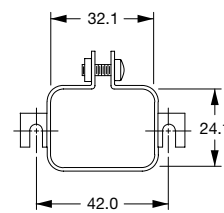
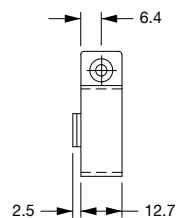
**Dimensions**

(Details see overview table and table of variants)

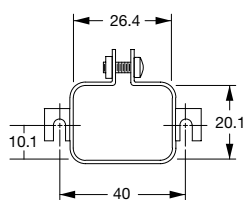
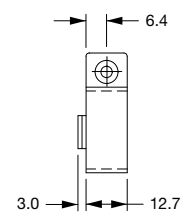
1) Inlet/Outlet      2) Plug/Connector      3) Design



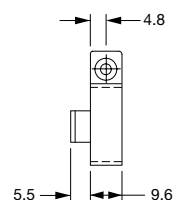
0888.0019



0888.0020



0888.0021





Type	Appliance inlet/outlet						Cord plug/connector									
	Snap-in Mounting	Screw-on Mounting	Mounting from Frontside	Mounting from Rearside	Outlet	Inlet	Panel Thickness	Type	4781	4782	4795	4732	4735	4796	3020	302U
								Dimension A	61.5	61.5	57.0	55.5	60.0	58.0	-	-
								Plug	*	*	*	*	*	*	*	*
								Connector	*	*	*	*	*	*	*	*
4707		*	*		*	*			B	B						
4721		*	*		*	*						D				
4721		*	*		*	*							F			
4723	*		*		*	*						E				
4723	*		*		*	*							G			
4752	*		*		*	*						E				
4752	*		*		*	*							G			
4754	*		*		*	*							E			
4754	*		*		*	*							G			
4754	*		*		*	*			H	H					Z	Z
4758	*		*		*	*						E				
4758	*		*		*	*							G			
4758	*		*		*	*			H	H					Z	Z
4793		*	*		*	*					L					
4797	*		*		*	*								L		
4797		*	*		*	*								J		
4798		*	*		*	*						K				
5110	*		*		*	*			A	A						
5110		*	*		*	*			C	C					Z	Z
5120	*		*		*	*			G	G					Z	Z
5120		*	*		*	*			G	G					Z	Z
5120		*	*		*	*			E	E					Z	Z
5120		*	*		*	*			G	G					Z	Z
5120		*	*		*	*			G	G					Z	Z
5120		*	*		*	*			E	E					Z	Z
5120		*	*		*	*			G	G					Z	Z
5150	*		*		*	*			G	G					Z	Z
5150		*	*		*	*			G	G					Z	Z
5150		*	*		*	*			E	E					Z	Z
5150		*	*		*	*			G	G					Z	Z
5130	*		*		*	*					L					
5130		*	*		*	*					L					
5130		*	*		*	*					L					
5200		*	*		*	*			B	B						
5220		*	*		*	*			B	B						
6100	*		*		*	*			A	A						
6100		*	*		*	*			C	C					Z	Z
6110	*		*		*	*			A	A						
6110		*	*		*	*			C	C					Z	Z
6135	*		*		*	*			A	A						
6200	*		*		*	*			A	A						
6200		*	*		*	*			B	B						
6220	*		*		*	*			A	A						
6220		*	*		*	*			B	B						
6600	*		*		*	*						E				
6600	*		*		*	*							G			
6600		*	*		*	*						D				
6600		*	*		*	*							F			
6610	*		*		*	*						E				
6610	*		*		*	*							G			
0723		*	*		*	*								J		
C20F	*		*		*	*						L				
C20F		*	*		*	*						L				
C20F		*	*		*	*						L				
CD	*		*		*	*			A	A						
CE	*		*		*	*			A	A						
CG	*		*		*	*			A	A						
DA22		*	*		*	*			H	H						
DC11	*		*		*	*			A	A						
DC11		*	*		*	*			B	B						
DC12	*		*		*	*			A	A						
DC12		*	*		*	*			B	B						
DC12		*	*		*	*			A	A						
DC21		*	*		*	*			G	G					Z	Z
DC22		*	*		*	*			H	H						
DD11		*	*		*	*			A	A						
DD11		*	*		*	*			A	A						
DD12		*	*		*	*			A	A						
DD12		*	*		*	*			A	A						
DD21		*	*		*	*			A	A						
DD21		*	*		*	*			A	A						
DD22		*	*		*	*			A	A						

Type	Appliance inlet/outlet							Cord plug/connector								
	Snap-in Mounting	Screw-on Mounting	Mounting from Frontside	Mounting from Rearside	Outlet	Inlet	Panel Thickness	Type	4781	4782	4795	4732	4735	4796	3020	302U
								Dimension A	61.5	61.5	57.0	55.5	60.0	58.0	-	-
								Plug								
Connector	.	.	.	.	.	.	.	.	.	.	.	.	.	.		
EC11		.	.			.				M				Z	Z	
EC12		.		.		.				M				Z	Z	
EF11		.		.		.				M				Z	Z	
EF12		.		.		.				M				Z	Z	
EG11		.		.		.				M				Z	Z	
EG12		.		.		.				M				Z	Z	
FELCOM 54	.		.		.			A	A							
FELCOM 54	.		.		.					E						
FELCOM 54	.		.		.						G					
FELCOM 64	.		.		.			A	A							
FELCOM 64	.		.		.					E						
FELCOM 64	.		.		.						G					
KD	.	.	.		.			A	A							
KE	.	.	.		.			A	A							
KEA	.	.	.		.			A	A							
KEA	.	.	.		.			B	B							
KEB I	.	.	.		.			A	A							
KEB I	.	.	.		.			B	B							
KEB II	.	.	.		.			A	A							
KEC	.	.	.		.			A	A							
KFA	.	.	.		.			A	A							
KFA	.	.	.		.			B	B							
KFA	.	.	.		.			A	A							
KFB I	.	.	.		.			B	B							
KFB II	.	.	.		.			A	A							
KFC	.	.	.		.			A	A							
KFS	.	.	.		.			C	C					Z	Z	
KFX	.	.	.		.			C	C					Z	Z	
KG	.	.	.		.			A	A							
KM	.	.	.		.			A	A							

## Variants

Kit	Design	B	C	D	E	Order Number
A	Flat head	8	45.5	36	3.4	4700.0001
B	Countersunk	9.5	45.5	36	3.4	4700.0002
C	Countersunk	8	45.5	40	3.4	4700.0003
D	Countersunk	4	40	40	3.4	4700.0004
E	Flat head	4.5	40	40	3.4	4700.0005
F	Countersunk	4	45.5	40	3.4	4700.0006
G	Flat head	4.5	45.5	40	3.4	4700.0007
H	Flat head	5.5	45.5	40	3.4	4700.0008
J	Countersunk	8	37.5	45	3.4	4700.0009
K	Countersunk	6.6	37.5	42	3.4	4700.0010
L	Flat head	5.5	37.5	42.5	3.4	4700.0011
M	Flat head	5.5	40	42.5	3.4	4700.0012
X	Flat head	-	-	43.2	-	0888.0019
Y	Flat head	-	-	42	-	0888.0020
Z	Flat head	-	-	40	-	0888.0021

Set see Cord retaining Selector Chart

**Packaging unit** 50 Pcs