

Current refinements (click to remove)

[Search Tips](#) 
 Region **USA** Product Family **Ring Terminal, Non-Insulated** Text Search: **'P14-10R-C'**
Your search criteria matched only one product, shown below.


- Ring tongue design assures a secure connection in high vibration applications
- Internal barrel serrations assure good wire contact and maximum tensile strength
- Brazed seam protects terminal barrel from splitting during the crimp process
- Barrel of terminal internally beveled to provide quick and easy wire insertion
- UL and CSA rated up to 2000 V per UL 486
- Maximum recommended operating temperature 302°F (150°C)

‡UL and CSA approved tooling/product combinations.

Note: Wire sizes #26 – #22 AWG, are not UL Listed or CSA Certified.

| | |
|--------------------------------|---|
| Part Number: | P14-10R-C |
| RoHS Compliance Status: | Compliant |
| Part Description: | Ring Terminal, 18 – 14 AWG, #10 stud size, non-insulated. |
| Product Type: | Terminals |
| CSA Certified: | Yes |
| UL Listed: | Yes |
| Length (In.): | .71 |
| Width (In.): | .31 |
| Angle: | straight |
| Clearance: | .25 |
| Stock: | .03 |
| Stud Size: | #10 |
| Tool: | CT-100A‡, CT-200‡, CT-600-A‡, CT-1570‡, CT-2500‡ |
| Wire Range: | 18 – 14 AWG |
| Wire Range (mm ²): | 1.0 - 2.5 |
| Min. Order UOM: | PC |
| Min. Order Qty.: | 100 |

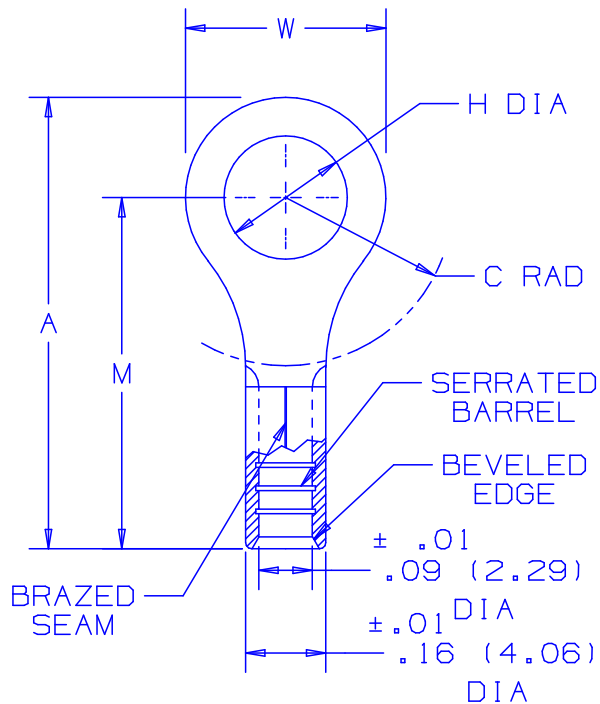
BOM Qty. (# of Pkgs.)

[Add to My Catalog](#)

 Please [register](#) to utilize the 'Bill of Materials', 'Submit Quotes' and 'My Catalog' features.

THIS COPY IS PROVIDED ON A RESTRICTED BASIS AND IS NOT TO BE USED IN ANY WAY DETRIMENTAL TO THE INTERESTS OF PANDUIT CORP.

| PANDUIT PART NUMBER | STUD SIZE | DIMENSIONS in. | | | | |
|---------------------|----------------|----------------|---------------|---------------|---------------|---------------|
| | | A $\pm .03$ | W $\pm .01$ | C MIN | M $\pm .03$ | H $\pm .01$ |
| P14-4R | -C -M #4 | .62 (15.8) | .25 (6.4) | .20 (5.1) | .50 (12.7) | .12 (3.1) |
| P14-6R | -C -M #6 | .62 (15.8) | .25 (6.4) | .20 (5.1) | .50 (12.7) | .15 (3.8) |
| P14-8R | -C -M #8 | .71 (18.0) | .31 (7.9) | .25 (6.4) | .55 (14.0) | .17 (4.3) |
| P14-10R | -C -M #10 | .71 (18.0) | .31 (7.9) | .25 (6.4) | .55 (14.0) | .20 (5.1) |
| P14-14R | -C -M 1/4" | .91 (23.1) | .46 (11.7) | .38 (9.7) | .68 (17.3) | .27 (6.9) |
| P14-56R | -C -M 5/16" | .91 (23.1) | .46 (11.7) | .38 (9.7) | .68 (17.3) | .34 (8.6) |
| P14-38R | -C -M 3/8" | 1.00 (25.4) | .53 (13.5) | .43 (10.9) | .73 (18.5) | .40 (10.2) |
| P14-12R | -L 1/2" | 1.20 (30.5) | .72 (18.3) | .53 (13.5) | .84 (21.3) | .52 (13.2) |



NOTES:

- UL LISTED AND CSA CERTIFIED FOR:
 - 18-14 AWG SOLID OR STRANDED COPPER WIRE
- MAXIMUM RECOMMENDED OPERATING TEMP. NOT TO EXCEED 150° (302°F)
- MATERIAL:
 - STAMPING - .03" (.8) THK COPPER, TIN PLATED
- PACKAGE QTY:

| | |
|-----------|---------|
| STD. PKG. | -L=50 |
| BULK PKG. | -C=100 |
| | -M=1000 |
- DIMENSIONS IN BRACKETS ARE IN MILLIMETERS
- INSTALLATION TOOLS:
 - UL LISTED AND CSA CERTIFIED: CT-100, CT-200, CT-570, CT-1570
 - PANDUIT APPROVED: CT-160, CT-260
- WIRE STRIP LENGTH: 9/32 ^{+1/32} .0 (7.1 ⁺⁸ .0)



LISTED
587H
E52164



CERTIFIED
LR31212

A41264_06

| REV | DATE | BY | CHK | DESCRIPTION | ECN # | CUST | PM |
|-----|-------|------|-----|--------------------------------|-------|------|-----|
| 06 | 12/03 | KLFU | | REMOVED NOTE 1B, ADDED NOTE 2 | | | |
| 05 | 5/02 | SRB | SKB | CHANGED (DIMS) TO 1 PL DECIMAL | 10231 | LA | -- |
| 04 | 4/02 | SRB | -- | ADDED P14-12R | 10171 | -- | TRO |

PANDUIT CORP.

TINLEY PARK, ILLINOIS

#16-14 BARREL NON-INSULATED
RING TONGUE

| | | | |
|-----------------|--------------|---------------|-----------------------|
| DRAWN BY DAW | CHK'D RLS | SCALE NONE | DRAWING NO. A41264 |
|-----------------|--------------|---------------|-----------------------|