

MICRO SWITCH
a Honeywell Division

FED. MFG. CODE 91929

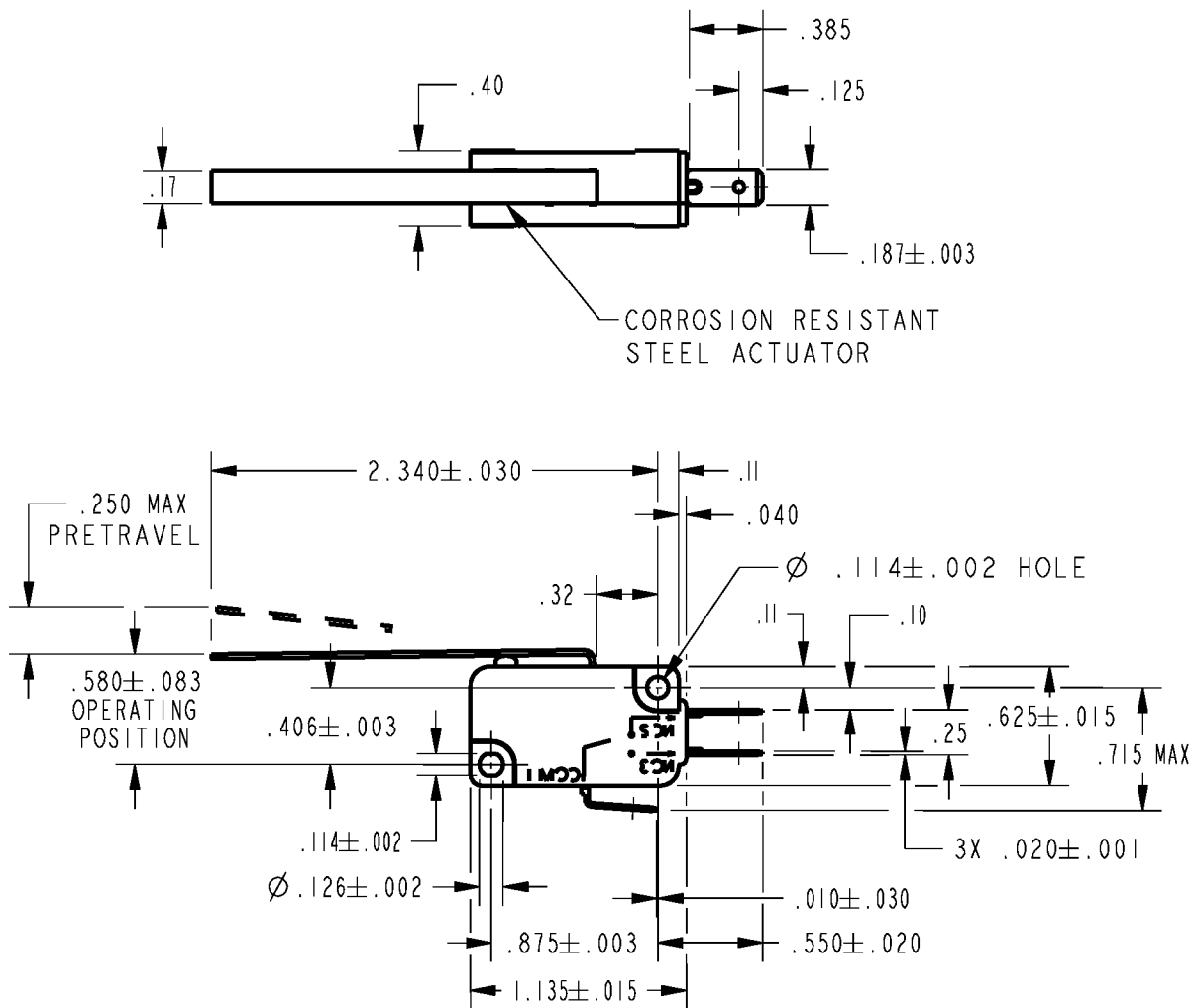
SWITCH-BASIC

CATALOG LISTING

V7-6C17D8-048-1

CW-C6019

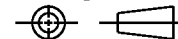
CATALOG LISTING
 V7-6C17D8-048-1
 PAGE 1 OF 1
 RELEASE NO. PR-22880
 REPLACES -
 ISSUE 3
 CHECK
 REVISIONS
 A 206828
 GLH 15NOV02
 CHECK
 SAV 15NOV02
 CHECK
 GLH 15NOV02
 DRAWN PTC/CAD 2D



ANSI Y14.5M-1982 APPLIES

THIS DRAWING COVERS A PROPRIETARY ITEM AND IS THE PROPERTY OF MICRO SWITCH, A DIVISION OF HONEYWELL. THIS DRAWING IS NOT TO BE COPIED OR USED WITHOUT THE APPROVAL OF MICRO SWITCH.

THIRD ANGLE PROJECTION



CHARACTERISTICS

OPERATING FORCE----- 120 GRAMS MAX
 RELEASE FORCE----- 19 GRAMS MIN
 DIFFERENTIAL TRAVEL----- .010-.054
 OVERTRAVEL----- .124 MIN
 RELEASE TRAVEL----- .030 MIN

ELECTRICAL DATA

CONTACT ARRANGEMENT
S P D T

L215

15.1A 1/2HP 125, 250 OR 277 VAC
 1/2A 125 VDC
 1/4A 250 VDC; 5A 120 VAC "L"

SCALE FULL

DO NOT SCALE PRINT

UNLESS OTHERWISE SPECIFIED TOLERANCES ARE
 ONE PLACE (.0) ±.030
 TWO PLACE (.00) ±.015
 THREE PLACE (.000) ±.005
 ANGLES ±

WEIGHT

