



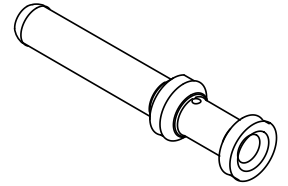
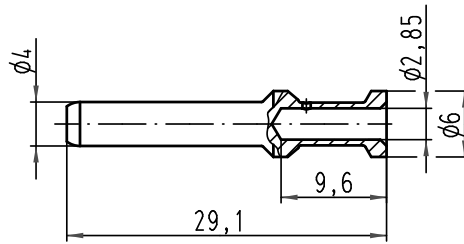
# Product details

**09 32 000 6107**

**Male contact**

Contact type	Power contact Han® K 12/2 + 6/36
Cross section	4.0 mm <sup>2</sup>
Plating	Silver plated
Application	browsing..
Series	Han® Q
RoHS compliant	Yes

Alle Rechte vorbehalten / All rights reserved



Leiterquerschnitt / wire gauge: 4mm<sup>2</sup> / AWG 12  
 Abisolierlänge / stripping length: 9,5mm

All Dimensions in mm Original Size DIN A 4		Techn. Character.			Nicht tolerierte Maß / Free size tolerances		
			Dat.	Name	Maßstab / Scale  2:1	Han C Stiftkontakt gedreht 40A/ Han C male contact twisted 40A versilbert / silver plated	
			Detail.	Ho			
			Insp.	Tie			
			Stand.				
A			HARTING Electric GmbH & Co. KG D-32339 Espelkamp			TB 09 32 000 6107 Sub. TB 09 32 000 6107 v. 20.12.05	Blatt / page /
Mod.	Dat.	Name					