



We Tame Photons to Work for You!



Products Search Tools Solutions Literature Tech Notes Support Corporate

Products > LED Indicators > Panel Indicators > Round > Front Insertion > 5mm > Chrome Housing > Flush LED > 0.323" Panel Cutout > 2 Leaded



### Features / Options

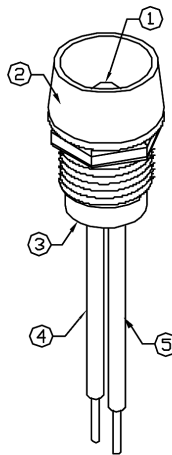
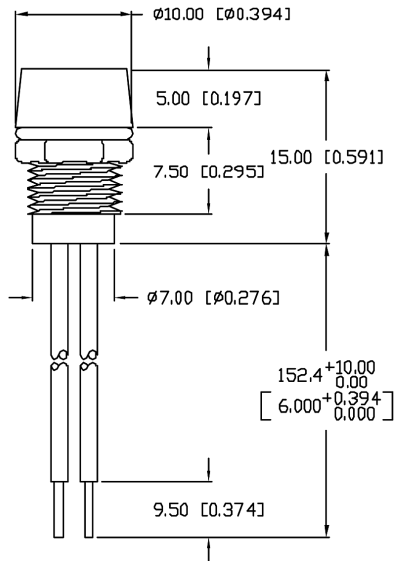
- ▶ Bi-Color Styles Optional
- ▶ State-of-the-Art, LED Technology
- ▶ Choice of LED Colors and Lens Finishes
- ▶ Insulated Lead Lengths Optional
- ▶ Easy installation through panel

### Applications / Uses

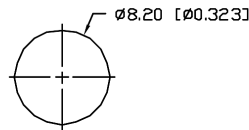
- ▶ Front Panel Status Indicators
- ▶ Alarm/Warning Indicators
- ▶ Front Panel Circuit Fault Indicators
- ▶ Instrument Control Panels
- ▶ Medical Diagnostics Indicators
- ▶ Industrial Automation Control Panels

| Part Number:       | Brightness | Material | Emitted Color | Wavelength | Intensity | View Angle | Voltage |
|--------------------|------------|----------|---------------|------------|-----------|------------|---------|
| SSI-LXR4815BID-150 | STANDARD   | GaAsP    | Blinking Red  | 635        | 600       | 30         | 3.0     |
| SSI-LXR4815GD-150  | STANDARD   | Gap      | Green         | 565        | 30        | 60         | 2.2     |
| SSI-LXR4815GD5V150 | STANDARD   | GaP      | Green         | 565        | 15        | 60         | 5.0     |
| SSI-LXR4815HGW-150 | STANDARD   | GaP      | Red/ Green    | 700/565    | 5/8       | 60         | 2.0/2.2 |
| SSI-LXR4815ID-150  | STANDARD   | GaAsP    | Red           | 635        | 40        | 60         | 2.0     |
| SSI-LXR4815ID5V150 | STANDARD   | GaAsP    | Red           | 635        | 20        | 60         | 5.0     |
| SSI-LXR4815SID-150 | HIGH       | AlInGaP  | Red           | 636        | 100       | 60         | 2.0     |
| SSI-LXR4815SOD-150 | HIGH       | AlInGaP  | Orange        | 610        | 100       | 60         | 2.0     |
| SSI-LXR4815SRD-150 | HIGH       | GaAlAs   | Red           | 660        | 300       | 60         | 1.8     |
| SSI-LXR4815SUGD150 | HIGH       | AlInGaP  | Green         | 574        | 250       | 60         | 2.2     |
| SSI-LXR4815SYD-150 | HIGH       | AlInGaP  | Yellow        | 590        | 200       | 60         | 2.1     |

UNCONTROLLED DOCUMENT



PANEL CUTOUT



NOTES:

- 1. SSL-LX5063SRD, RED LED. TRIM LEADS TO 5mm.
- 2. SSI-LXR4815, CHROME HOUSING.
- 3. SSH-LXH4815BSC, BLACK NYLON BUSHING. (NOT SEEN)
- 4. ANODE LEAD: LXP-WST24RDT0C, RED INSULATION, 160mm LONG, STRIP 2mm & 9.5mm.
- 5. CATHODE LEAD: LXP-WST24BLT0C, BLACK INSULATION, 160mm LONG, STRIP 2mm & 9.5mm.

PART NUMBER  
SSI-LXR4815SRD-150

REV.  
D

| REV. | E.C.N. NUMBER AND REVISION COMMENTS | DATE     |
|------|-------------------------------------|----------|
| A    | REDRAWN, UPDATED SAFE OPER. SPECS.  | 10.27.94 |
| B    | CORRECTED WIRE STRIP LENGTH.        | 11.17.94 |
| C    | E.C.N. #10674.                      | 10.30.00 |
| D    | E.C.N. #10BRDR. & REDRAWN IN 3D.    | 1.10.02  |

ELECTRO-OPTICAL CHARACTERISTICS  $T_A=25^\circ\text{C}$   $I_f=20\text{mA}$

| PARAMETER          | MIN          | TYP | MAX | UNITS    | TEST COND            |
|--------------------|--------------|-----|-----|----------|----------------------|
| PEAK WAVELENGTH    |              | 660 |     | nm       |                      |
| FORWARD VOLTAGE    |              | 1.8 | 2.2 | $V_f$    |                      |
| REVERSE VOLTAGE    | 4.0          |     |     | $V_r$    | $I_f=100\mu\text{A}$ |
| AXIAL INTENSITY    |              | 300 |     | med      | $I_f=20\text{mA}$    |
| VIEWING ANGLE      |              | 60  |     | 2x theta |                      |
| EMITTED COLOR:     | RED          |     |     |          |                      |
| EPOXY LENS FINISH: | RED DIFFUSED |     |     |          |                      |

LIMITS OF SAFE OPERATION AT 25°C

| PARAMETER                | MAX        | UNITS |
|--------------------------|------------|-------|
| PEAK FORWARD CURRENT*    | 150        | mA    |
| STEADY CURRENT           | 30         | mA    |
| POWER DISSIPATION        | 100        | mW    |
| DERATE FROM 25°C         | -1.2       | mW/°C |
| OPERATING, STORAGE TEMP. | -40 TO +85 | °C    |

\*  $t < 10\mu\text{s}$

\*UNLESS OTHERWISE SPECIFIED TOLERANCES PER DECIMAL PRECISION ARE: X=±1 (±0.039), XX=±0.5 (±0.020), XXX=±0.25 (±0.010), XXXX=±0.127 (±0.005). LEAD SIZE=±0.05 (±0.002), LEAD LENGTH=±0.75 (±0.030). MIN=+DECIMAL PRECISION MAX.=+0.00 -DECIMAL PRECISION

UNCONTROLLED DOCUMENT

REV. D PART NUMBER SSI-LXR4815SRD-150

T-5mm 660nm SUPER RED LED PANEL INDICATOR LED,  
RED DIFFUSED LENS, WITH 6" WIRE LEADS.

CONFIDENTIAL INFORMATION  
THE INFORMATION CONTAINED IN THIS DOCUMENT IS THE PROPERTY OF LUMEX INC. EXCEPT AS SPECIFICALLY AUTHORIZED IN WRITING BY LUMEX INC., THE HOLDER OF THIS DOCUMENT SHALL KEEP ALL INFORMATION CONTAINED HEREIN CONFIDENTIAL AND SHALL PROTECT SAME IN WHOLE OR IN PART FROM DISCLOSURE AND DISSEMINATION TO ALL THIRD PARTIES.

RELIABILITY NOTE  
OUR MANY YEARS OF EXPERIENCE DATA ACCUMULATION INDICATE THAT SOLDER HEAT IS A MAJOR CAUSE OF EARLY AND FUTURE FAILURE. PLEASE PAY ATTENTION TO YOUR SOLDERING PROCESS.

