

Switch Language

English

Need Assistance?

- Contact Us
- Find a Distributor
- Order Samples
- Tech Library

Printer-friendly page

Email this page

[Home](#)   [Crimp Housings](#)   [Datasheet](#)

**Part Number:** 0022012057

**Status:** Active    **Overview:** KK@

**Description:** 2.54mm (.100") Pitch KK@ Crimp Terminal Housing, Friction Ramp, 5 Circuits, Use with 2759|6459|41572

**Documents:**

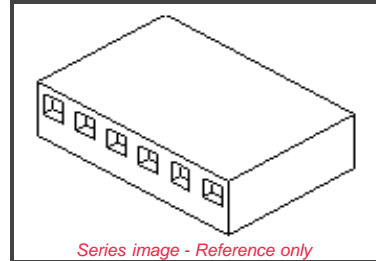
*Note - Please disable browser pop-up blockers for documents on www.molex.com*

[Drawing \(PDF\)](#)

[Product Specification PS-10-07 \(PDF\)](#)

[3D Model](#)

[Related Catalog Page \(PDF\)](#)



Series image - Reference only

**Order Products:**

[Check Distributor Inventory](#)

[Add to My Parts](#)

[Request Samples](#)

**Part Detail:** [\(show all\)](#)

[General](#)   [Physical](#)   [Electrical](#)   [Material Info](#)

**General**

Product Family	Crimp Housings
Series	<a href="#">2695</a>
Overview	<a href="#">KK@</a>
Product Name	KK@

**Physical**

Circuits (maximum)	5
Color - Resin	Natural (White)
Flammability	94V-0
Gender	Female
Lock to Mating Part	Yes
Material - Resin	Nylon
Number of Rows	1
Packaging Type	Bag
Panel Mount	No
Pitch - Mating Interface (in)	0.100 In
Pitch - Mating Interface (mm)	2.54 mm
Stackable	No
Temperature Range - Operating	0°C to +75°C

**Electrical**

CSA	LR19980
UL	E29179

**Material Info**

Old Part Number	2695-05R
-----------------	----------

**Reference - Drawing Numbers**

Product Specification	PS-10-07
Sales Drawing	SD-2695

**EU RoHS**

ELV and RoHS Compliant

**China RoHS**



**Need more information on product compliance?**

Email [productcompliance@molex.com](mailto:productcompliance@molex.com)

Please visit the [Contact Us](#) section for any non-product compliance questions.

**Search Parts in this Series**

[2695 Series](#)

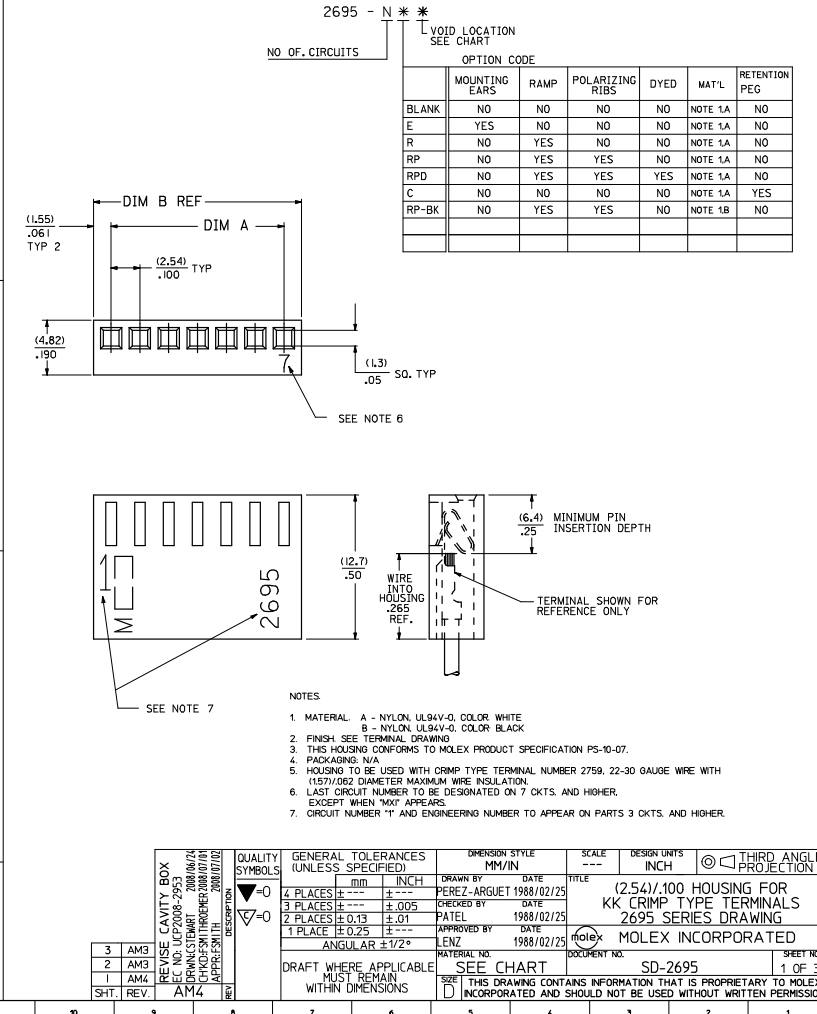
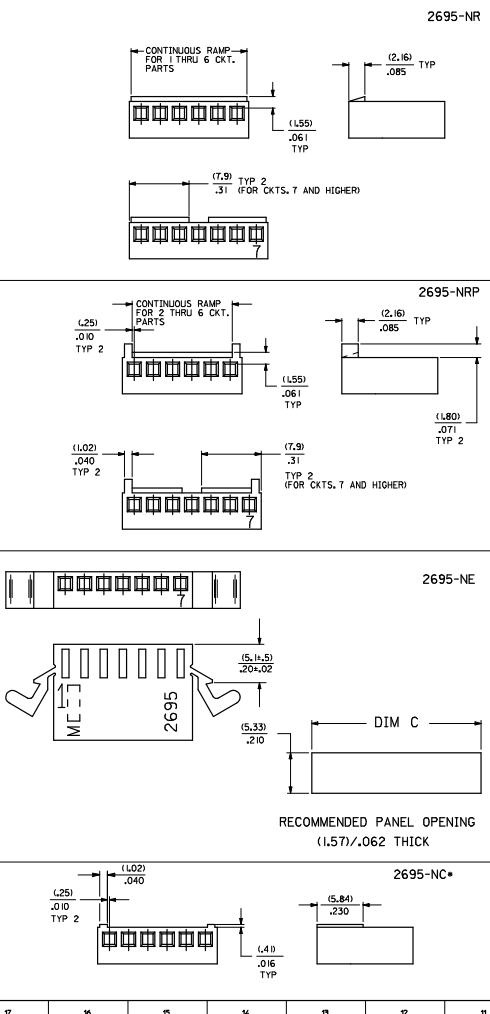
**Mates With**

2.54mm (.100") Pitch KK@ Crimp Terminal Housing, Friction Ramp, 5 Circuits, Use with 2759, 6459, 41572

**Use With**

KK@ Crimp Terminal Housing [2695](#), [6471](#), [7880](#)

NO. OF CKT'S.	DIM. A	DIM. B	DIM. C
1	N/A	(5.10)	(7.16)
2	(7.54±.05)	.122	(9.70)
3	.100±.002	.222	(3.82)
4	(5.08±.05)	(8.18)	(12.24)
5	(7.62±.05)	.322	(4.82)
6	.300±.002	.422	(5.82)
7	(10.86±.05)	(13.26)	(17.32)
8	.400±.002	.522	(6.82)
9	(12.70±.08)	(15.80)	(19.86)
10	.500±.003	.622	(7.82)
11	(15.24±.08)	(18.34)	(22.40)
12	.600±.003	.722	(8.82)
13	(17.78±.08)	(20.88)	(24.94)
14	.700±.003	.822	(9.82)
15	(20.32±.10)	(23.42)	(27.48)
16	.800±.004	.922	(10.82)
17	(22.86±.10)	(25.96)	(30.02)
18	.900±.004	1.022	(11.82)
19	(25.40±.10)	(28.50)	(32.56)
20	L000±.004	L122	L282
21	(27.94±.13)	(31.04)	(35.10)
22	L100±.005	L222	L382
23	(30.48±.13)	(33.58)	(37.64)
24	L200±.005	L322	L482
25	(33.02±.13)	(36.12)	(40.18)
26	L300±.005	L422	L582
27	(35.56±.13)	(38.66)	(42.72)
28	L400±.005	L522	L682
29	(38.10±.15)	(41.20)	(45.26)
30	L500±.006	L622	L782
31	(40.64±.15)	(43.74)	(47.80)
32	L600±.006	L722	L882
33	(43.18±.15)	(46.28)	(50.34)
34	L700±.006	L822	L982
35	(45.72±.15)	(48.82)	(52.88)
36	L800±.006	L922	L1082
37	(48.26±.15)	(51.36)	(55.42)
38	L900±.006	L1022	L1182
39	(50.80±.18)	(53.90)	(57.96)
40	L1000±.007	L1122	L1282
41	(53.34±.18)	(56.44)	(60.50)
42	L1100±.007	L1222	L1382
43	(55.88±.18)	(58.98)	(63.04)
44	L1200±.007	L1322	L1482
45	(58.42±.18)	(61.52)	(65.58)
46	L1300±.007	L1422	L1582
47	(60.96±.20)	(64.06)	(68.12)
48	L1400±.008	L1522	L1682
49	(63.50±.20)	(66.60)	(70.66)
50	L1500±.008	L1622	L1782
51	(66.04±.20)	(69.14)	(73.20)
52	L1600±.008	L1722	L1882
53	(68.58±.20)	(71.68)	(75.74)
54	L1700±.008	L1822	L1982
55	(71.12±.23)	(74.22)	(78.28)
56	L1800±.009	L1922	L2082
57	(73.66±.23)	(76.76)	(80.82)
58	L1900±.009	L2022	L2182
59	(76.20±.23)	(79.30)	(83.36)
60	L2000±.009	L2122	L2282
61	(78.74±.23)	(81.84)	(85.90)
62	L2100±.009	L2222	L2382
63	(81.28±.25)	(84.38)	(88.44)
64	L2200±.010	L2322	L2482
65	(83.82±.25)	(86.92)	(90.98)
66	L2300±.010	L2422	L2582
67	(86.36±.25)	(89.46)	(93.52)
68	L2400±.010	L2522	L2682
69	(88.90±.25)	(92.00)	(96.06)
70	L2500±.010	L2622	L2782
71	(91.44±.28)	(94.54)	(98.60)
72	L2600±.011	L2722	L2882
73	(93.98±.28)	(97.08)	(101.14)
74	L2700±.011	L2822	L2982
75	(96.52±.28)	(99.62)	(103.68)
76	L2800±.011	L2922	L3082
77	(99.06±.28)	(102.16)	(106.22)
78	L2900±.011	L3022	L3182





2695-NC*																	
PART NO.	ENG. NO.	VOIDS	PART NO.	ENG. NO.	VOIDS	PART NO.	ENG. NO.	VOIDS	PART NO.	ENG. NO.	VOIDS	PART NO.	ENG. NO.	VOIDS	PART NO.	ENG. NO.	VOIDS
N/A	2695-1C																
	2695-2C																
	2695-3C																
	2695-4C																
	2695-5C																
	2695-6C																
	2695-7C																
	2695-8C																
	2695-9C																
	2695-10C																
	2695-11C																
	2695-12C																
	2695-13C																
	2695-14C																
	2695-15C																
	2695-16C																
	2695-17C																
	2695-18C																
	2695-19C																
	2695-20C																
	2695-21C																
	2695-22C																
	2695-23C																
	2695-24C																
	2695-25C																
	2695-26C																
	2695-27C																
	2695-28C																
	2695-29C																
	2695-30C																
	2695-31C																
	2695-32C																
	2695-33C																
	2695-34C																
	2695-35C																
	2695-36C																
	2695-37C																
	2695-38C																
	2695-39C																
	2695-40C																

UPDATE TITLE BLOCK EC NO. LCP2006-1024 2005/11/01 AM LCP2006-1024 2005/11/01 AM LCP2006-1024 2005/11/01 AM	QUALITY SYMBOLS 	GENERAL TOLERANCES (UNLESS SPECIFIED) mm INCH 4 PLACES ± ± ± ± 3 PLACES ± ± ± ± 2 PLACES ± ± ± ± 1 PLACE ± ± ± ± ANGULAR ±1/2°		DIMENSION STYLE MM/IN DRAWN BY DATE SAM IEC 1989/10/30 CHECKED BY DATE PATEL 1989/10/30 APPROVED BY DATE LENZ 1989/10/30		SCALE DESIGN UNITS --- INCH TITLE (2.54)/.100 HOUSING FOR KK CRIMP TYPE TERMINALS 2695 SERIES DRAWING MATERIAL NO. DOCUMENT NO. LENZ SD-2695 MOLEX INCORPORATED		THIRD ANGLE PROJECTION 		SHEET NO. 3 OF 3	
		DRAFT WHERE APPLICABLE MUST REMAIN WITHIN DIMENSIONS		THIS DRAWING CONTAINS INFORMATION THAT IS PROPRIETARY TO MOLEX INCORPORATED AND SHOULD NOT BE USED WITHOUT WRITTEN PERMISSION							