

Switch Language

English

Need Assistance?

- Contact Us
- Find a Distributor
- Order Samples
- Tech Library

[Printer-friendly page](#)

[Email this page](#)

[Home](#) [Crimp Housings](#) [Datasheet](#)

Part Number: 0050579002

Status: Active **Overview:** [SL](#)

Description: 2.54mm (.100") Pitch SL™ Crimp Housing, Single Row, Version A, Nonpolarized, 2 Circuits

Documents:

Note - Please disable browser pop-up blockers for documents on www.molex.com

- [Drawing \(PDF\)](#)
- [Product Specification PS-70058 \(PDF\)](#)
- [Product Specification PS-70400 \(PDF\)](#)
- [3D Model](#)
- [Related Catalog Page \(PDF\)](#)
- [Packaging Specification \(PDF\)](#)

Order Products:

- [Check Distributor Inventory](#)
- [Add to My Parts](#)
- [Request Samples](#)

Part Detail: [\(show all\)](#)

[General](#) [Physical](#) [Electrical](#) [Material Info](#)

General

Product Family	Crimp Housings
Series	70066
Comments	Version A
Overview	SL
Product Name	SL™

Physical

Circuits (maximum)	2
Color - Resin	Black
Flammability	94V-0
Gender	Female
Material - Resin	Polyester Alloy
Number of Rows	1
Packaging Type	Bag
Panel Mount	No
Pitch - Mating Interface (in)	0.100 In
Pitch - Mating Interface (mm)	2.54 mm
Stackable	Yes
Temperature Range - Operating	-40°C to +105°C

Electrical

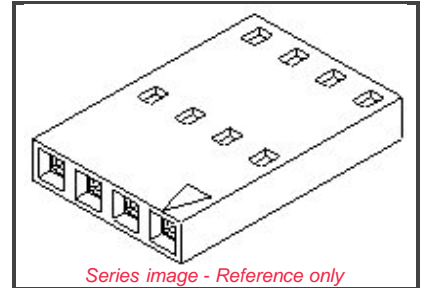
CSA	LR19980
UL	E29179

Material Info

Old Part Number	70066-0001
-----------------	------------

Reference - Drawing Numbers

Product Specification	PS-70058
Product Specification	PS-70400
Sales Drawing	SD-70066-0001-0024



EU RoHS **China RoHS**
ELV and RoHS Compliant



Need more information on product compliance?

Email productcompliance@molex.com

Please visit the [Contact Us](#) section for any non-product compliance questions.

Search Parts in this Series

[70066](#) Series

Mates With

[8624](#), [70203](#), [70206](#), [42375](#), [42377](#)

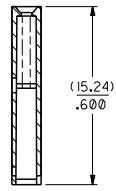
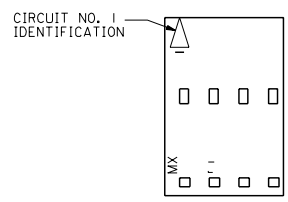
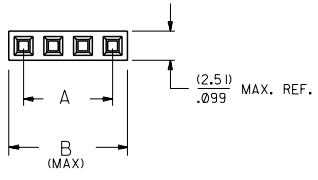
Use With

[70058](#), [71851](#)

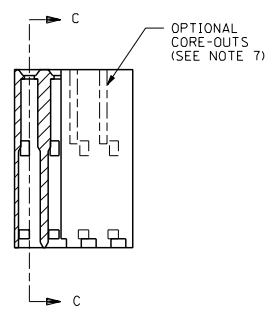
13 12 11 10 9 8 7 6 70066 4 3 2 1

- NOTES:**
- 1) MATERIAL: G.F. POLYESTER
 - 2) HOUSING TO BE USED WITH TERMINAL PT. NO. 70058-****
 - 3) SEE CHART FOR CIRCUIT SIZES.
 - 4) TO BE USED WITH (0.64)/.025 SQ. OR RD. PINS.
 - 5) PARTS STACKABLE END TO END AND SIDE BY SIDE ON (2.54)/.100 CENTERS.
 - 6) REFER TO PRODUCT SPECIFICATION NO. : P.S.-70058
 - 7) PARTS MAY OR MAY NOT BE SUPPLIED WITH EXTERIOR CORE-OUT CONFIGURATION, SEE DWG. SD-70066-**** FOR OPTIONAL HOUSING DETAILS.
 - 8) PACKAGE PER PK-70066-100.

OPTION "A"



SECTION C-C



CKT. SIZE	EDP. NO.	ENG. NO.	A	B
2	50-57-9002	70066-0001	(2.54) .100	(5.05) .199
3	50-57-9003	70066-0002	(5.08) .200	(7.53) .299
4	50-57-9004	70066-0003	(7.62) .300	(10.13) .399
5	50-57-9005	70066-0004	(10.16) .400	(12.67) .499
6	50-57-9006	70066-0005	(12.70) .500	(15.21) .599
7	50-57-9007	70066-0006	(15.24) .600	(17.75) .699
8	50-57-9008	70066-0007	(17.78) .700	(20.29) .799
9	50-57-9009	70066-0008	(20.32) .800	(22.83) .899
10	50-57-9010	70066-0009	(22.86) .900	(25.37) .999
11	50-57-9011	70066-0010	(25.40) 1.000	(27.91) 1.099
12	50-57-9012	70066-0011	(27.94) 1.100	(30.45) 1.199
13	50-57-9013	70066-0012	(30.48) 1.200	(32.99) 1.299
14	50-57-9014	70066-0013	(33.02) 1.300	(35.53) 1.399
15	50-57-9015	70066-0014	(35.56) 1.400	(38.07) 1.499
16	50-57-9016	70066-0015	(38.10) 1.500	(40.61) 1.599
17	50-57-9017	70066-0016	(40.64) 1.600	(43.15) 1.699
18	50-57-9018	70066-0017	(43.18) 1.700	(45.69) 1.799
19	50-57-9019	70066-0018	(45.72) 1.800	(48.23) 1.899
20	50-57-9020	70066-0019	(48.26) 1.900	(50.77) 1.999
21	50-57-9021	70066-0020	(50.80) 2.000	(53.31) 2.099
22	50-57-9022	70066-0021	(53.34) 2.100	(55.85) 2.199
23	50-57-9023	70066-0022	(55.88) 2.200	(58.39) 2.299
24	50-57-9024	70066-0023	(58.42) 2.300	(60.93) 2.399
25	50-57-9025	70066-0024	(60.96) 2.400	(63.47) 2.499

REVISIONS LTR. REVISIONS LTR. REVISIONS		E REVISOR PER ECR* U10967 UC-MS*SUPLM@LUC	D REVISOR PER ECR* U80051 3-27-89 MGB	C REDRAWN ON CAD ECR * 9120 5/5/86 WZ	ADD PKG NOTE ECN LDT2000-0468 SCHAFFER 99/12/1	DIMENSIONS SHOWN IN METRIC INCH UNLESS OTHERWISE SPECIFIED TOLERANCES ANGULAR 1/2°	TITLE HOUSING CONNECTOR (2.54)/.100 GRID STACKABLE SINGLE ROW	MFG. SH. REV.
REVISIONS LTR. REVISIONS		REVISIONS LTR. REVISIONS		REVISIONS LTR. REVISIONS		UNLESS OTHERWISE SPECIFIED TOLERANCES ANGULAR 1/2°	TITLE HOUSING CONNECTOR (2.54)/.100 GRID STACKABLE SINGLE ROW	MFG. SH. REV.
REVISIONS LTR. REVISIONS		REVISIONS LTR. REVISIONS		REVISIONS LTR. REVISIONS		DRAFT WHERE APPLICABLE MUST REMAIN WITHIN DIMENSIONS	MOLEX INCORPORATED 135/EJLL 68532	DATE 03/27/86
REVISIONS LTR. REVISIONS		REVISIONS LTR. REVISIONS		REVISIONS LTR. REVISIONS		FILE NAME 700660001	SHEET NO. I	PART NO. SD-70066-0001-0024
REVISIONS LTR. REVISIONS		REVISIONS LTR. REVISIONS		REVISIONS LTR. REVISIONS		SCALE 4:1	THIS DRAWING CONTAINS INFORMATION THAT IS PROPRIETARY TO MOLEX INC. AND SHOULD NOT BE USED WITHOUT WRITTEN PERMISSION.	DATE DA

13 12 11 10 9 8 7 6 5 4 3 2 1