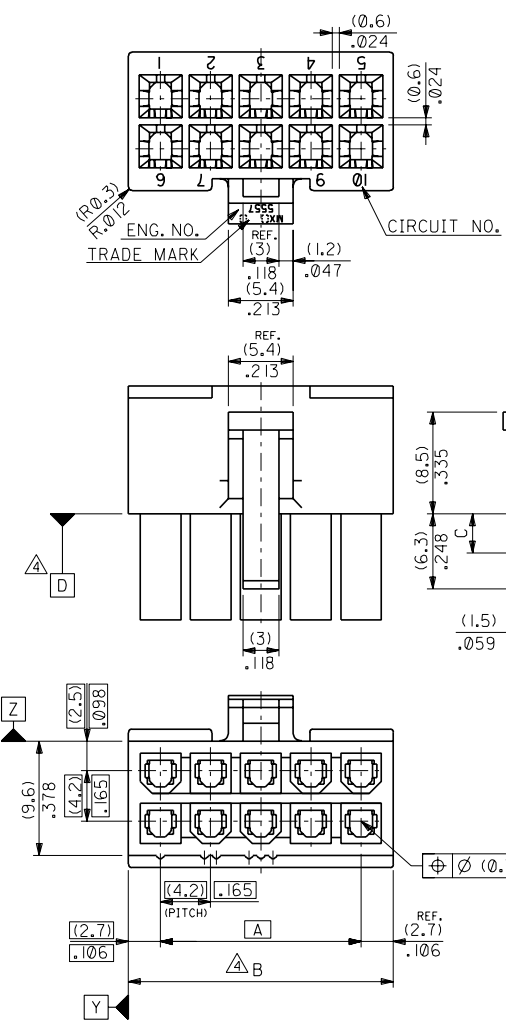


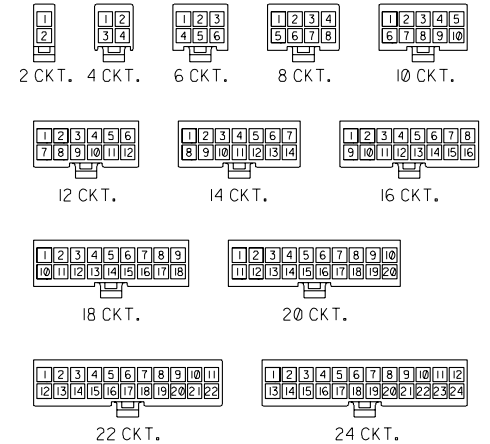
ENG. NO. SD-5557-NR-210
EDP NO. 39-01-2**5

ALL DIMENSIONS IN METRIC DO NOT SCALE DRAWING

8 7 6 5 4 3 2 1



NOTES
 1. TERMINAL : 5556 SERIES
 2. MATE WITH : 5559 SERIES
 5566 SERIES
 5569 SERIES
 3. (METRIC) VALUES SHOWN GOVERN OVER ENGLISH CONVERSION VALUES.
 △ TO BE MEASURED AT POSITION OF □ SURFACE.



CIRCUIT SIZE LAYOUT (SCALE: 1-1)

(3.6)	(47.4)	2.031	(42)	1.819	39-01-2245	5557-24R-210	24
.142	(43.2)	1.866	(37.8)	1.654	-2225	-22R-210	22
	(39)	1.701	(33.6)	1.488	-2205	-20R-210	20
	(34.8)	1.535	(29.4)	1.323	-2185	-18R-210	18
	(30.6)	1.37	(25.2)	1.158	-2165	-16R-210	16
	(26.4)	1.205	(21)	.992	-2145	-14R-210	14
(3.3)	(22.2)	1.039	(16.8)	.827	-2125	-12R-210	12
.129	(18)	.874	(12.6)	.661	-2105	-10R-210	10
	(13.8)	.709	(8.4)	.496	-2085	-08R-210	8
	(9.6)	.543	(4.2)	.331	-2065	-06R-210	6
		.378		.165	-2045	-04R-210	4
	(5.4)	.213			39-01-2025	5557-02R-210	2

材料 MATERIAL		66NYLON (UL94V-0)	
仕上げ FINISH		—	
適用電線範囲 WIRE RANGE		—	
被覆外径 INS. RANGE		—	
DRAWN BY 90/2/22		CHK'D BY 97/0/08	
S.MOCHIZUKI		M.FUKUSHIMA	
APP'D BY 97/0/08		尺 度 SCALE 3 - 1	
M.FUKUSHIMA			

角度 ANGLE	±30
30以上 OVER	±8.4
10以上 未過 UNDER	±3.3
10以下 未過 UNDER	±0.2
一般公差 GENERAL TOLERANCES	

F	REVISED (JCT0586)	S.A.M.F	97/11/8
E	REVISED (J20158)	H.H	92/4/20
D	REVISED (J01160)	H.H	90/11/8
C	REVISED & REDRAWN (J00192)	S.M	90/2/22
LTR	REVISION RECORD	DR. CHK.	日付 DATE

EDP. NO.	39-01-2**5
ENG. NO.	SD-5557-NR-210
TITLE 名称	NEW MINI FIT CONN. REC. HOUSING

THIS DRAWING CONTAINS INFORMATION THAT IS PROPRIETARY TO MOLEX/JAPAN AND SHOULD NOT BE USED WITHOUT WRITTEN PERMISSION
 本図面は日本モレックス(株)の所有する情報を含むもので 当社の許可なく複製を禁止する。 MXJ-8