

Switch Language

English

Need Assistance?

- Contact Us
- Find a Distributor
- Order Samples
- Tech Library

Printer-friendly page

Email this page

[Home](#)   [Crimp Housings](#)   [Datasheet](#)

**Part Number:** 0022012027

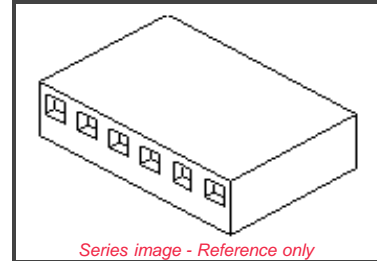
**Status:** Active   **Overview:** [KK@](#)

**Description:** 2.54mm (.100") Pitch KK@ Crimp Terminal Housing, Friction Ramp, 2 Circuits, Use with 2759|6459|41572

**Documents:**

*Note - Please disable browser pop-up blockers for documents on www.molex.com*

- [Drawing \(PDF\)](#)   [Product Specification PS-10-07 \(PDF\)](#)
- [3D Model](#)   [Related Catalog Page \(PDF\)](#)



Series image - Reference only

**Order Products:**

- [Check Distributor Inventory](#)   [Add to My Parts](#)
- [Request Samples](#)

**Part Detail:** [\(show all\)](#)

- [General](#)   [Physical](#)   [Electrical](#)   [Material Info](#)

**General**

Product Family	Crimp Housings
Series	<a href="#">2695</a>
Overview	<a href="#">KK@</a>
Product Name	KK@

**Physical**

Circuits (maximum)	2
Color - Resin	Natural (White)
Flammability	94V-0
Gender	Female
Lock to Mating Part	Yes
Material - Resin	Nylon
Number of Rows	1
Packaging Type	Bag
Panel Mount	No
Pitch - Mating Interface (in)	0.100 In
Pitch - Mating Interface (mm)	2.54 mm
Stackable	No
Temperature Range - Operating	0°C to +75°C

**Electrical**

CSA	LR19980
UL	E29179

**Material Info**

Old Part Number	2695-02R
-----------------	----------

**Reference - Drawing Numbers**

Product Specification	PS-10-07
Sales Drawing	SD-2695

**EU RoHS**

ELV and RoHS Compliant



**China RoHS**

**Need more information on product compliance?**

Email [productcompliance@molex.com](mailto:productcompliance@molex.com)

Please visit the [Contact Us](#) section for any non-product compliance questions.

**Search Parts in this Series**

[2695 Series](#)

**Mates With**

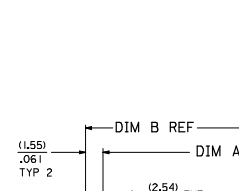
2.54mm (.100") Pitch KK@ Crimp Terminal Housing, Friction Ramp, 2 Circuits, Use with 2759, 6459, 41572

**Use With**

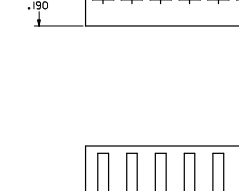
KK@ Crimp Terminal Housing [2695](#), [6471](#), [7880](#)

NO. OF CKT'S.	DIM. A	DIM. B	DIM. C
1	N/A	(5.10)	(7.16)
2	(2.54±.05)	.122	(9.70)
3	.100±.002	.222	3.382
4	(5.08±.05)	(8.18)	(12.24)
5	(1.62±.05)	.322	4.882
6	.300±.002	.422	5.582
7	(10.86±.05)	(13.26)	(17.32)
8	.400±.002	.522	6.882
9	(12.70±.08)	(15.80)	(19.86)
10	.500±.003	.622	7.182
11	(15.24±.08)	(18.34)	(22.40)
12	.600±.003	.722	8.882
13	(17.78±.08)	(20.88)	(24.94)
14	.700±.003	.822	9.982
15	(20.32±.10)	(23.42)	(27.48)
16	.800±.004	.922	10.882
17	(22.86±.10)	(25.96)	(30.02)
18	.900±.004	1.022	11.182
19	(25.40±.10)	(28.50)	(32.56)
20	L000±.004	L122	L282
21	(27.94±.13)	(31.04)	(35.10)
22	L100±.005	L222	L382
23	(30.48±.13)	(33.58)	(37.64)
24	L200±.005	L322	L482
25	(33.02±.13)	(36.12)	(40.18)
26	L300±.005	L422	L582
27	(35.56±.13)	(38.66)	(42.72)
28	L400±.005	L522	L682
29	(38.10±.15)	(41.20)	(45.26)
30	L500±.006	L622	L782
31	(40.64±.15)	(43.74)	(47.80)
32	L600±.006	L722	L882
33	(43.18±.15)	(46.28)	(50.34)
34	L700±.006	L822	L982
35	(45.72±.15)	(48.82)	(52.88)
36	L800±.006	L922	L1082
37	(48.26±.15)	(51.36)	(55.42)
38	L900±.006	L1022	L1182
39	(50.80±.18)	(53.90)	(57.96)
40	L1000±.007	L1122	L1282
41	(53.34±.18)	(56.44)	(60.50)
42	L1100±.007	L1222	L1382
43	(55.88±.18)	(58.98)	(63.04)
44	L1200±.007	L1322	L1482
45	(58.42±.18)	(61.52)	(65.58)
46	L1300±.007	L1422	L1582
47	(60.96±.20)	(64.06)	(68.12)
48	L1400±.008	L1522	L1682
49	(63.50±.20)	(66.60)	(70.66)
50	L1500±.008	L1622	L1782
51	(66.04±.20)	(69.14)	(73.20)
52	L1600±.008	L1722	L1882
53	(68.58±.20)	(71.68)	(75.74)
54	L1700±.008	L1822	L1982
55	(71.12±.23)	(74.22)	(78.28)
56	L1800±.009	L1922	L2082
57	(73.66±.23)	(76.76)	(80.82)
58	L1900±.009	L2022	L2182
59	(76.20±.23)	(79.30)	(83.36)
60	L2000±.009	L2122	L2282
61	(78.74±.23)	(81.84)	(85.90)
62	L2100±.009	L2222	L2382
63	(81.28±.25)	(84.38)	(88.44)
64	L2200±.010	L2322	L2482
65	(83.82±.25)	(86.92)	(90.98)
66	L2300±.010	L2422	L2582
67	(86.36±.25)	(89.46)	(93.52)
68	L2400±.010	L2522	L2682
69	(88.90±.25)	(92.00)	(96.06)
70	L2500±.010	L2622	L2782
71	(91.44±.28)	(94.54)	(98.60)
72	L2600±.011	L2722	L2882
73	(93.98±.28)	(97.08)	(101.14)
74	L2700±.011	L2822	L2982
75	(96.52±.28)	(99.62)	(103.68)
76	L2800±.011	L2922	L3082
77	(99.06±.28)	(102.16)	(106.22)
78	L2900±.011	L3022	L3182

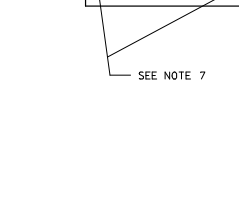
2695-NR



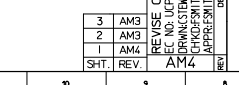
2695-NRP



2695-NE



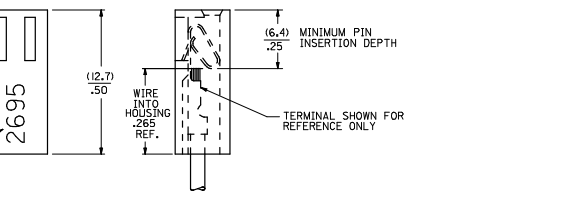
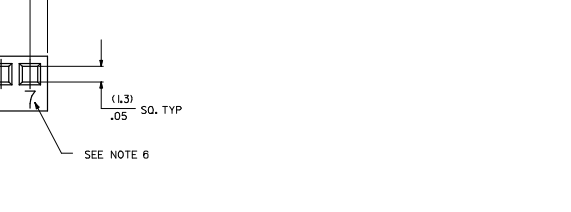
2695-NC\*



2695 - N \* \*  
NO. OF. CIRCUITS

VOID LOCATION SEE CHART

	BLANK	MOUNTING EARS	RAMP	POLARIZING RIBS	DYED	MAT'L	RETENTION PEG
E	NO	NO	NO	NO	NO	NOTE 1A	NO
R	YES	NO	NO	NO	NO	NOTE 1A	NO
RPD	NO	YES	NO	NO	NO	NOTE 1A	NO
RP	NO	YES	YES	NO	NO	NOTE 1A	NO
RPD	NO	YES	YES	YES	YES	NOTE 1A	NO
C	NO	NO	NO	NO	NO	NOTE 1A	YES
RP-BK	NO	YES	YES	NO	NO	NOTE 1B	NO



- NOTES
1. MATERIAL A - NYLON UL94V-0, COLOR WHITE  
B - NYLON UL94V-0, COLOR BLACK
  2. FINISH SEE TERMINAL DRAWING
  3. THIS HOUSING CONFORMS TO MOLEX PRODUCT SPECIFICATION PS-10-07.
  4. PACKAGING N/A
  5. HOUSING TO BE USED WITH CRIMP TYPE TERMINAL NUMBER 2759, 22-30 GAUGE WIRE WITH (1.57)Ø22 DIAMETER MAXIMUM WIRE INSULATION.
  6. LAST CIRCUIT NUMBER TO BE DESIGNATED ON 7 CKTS. AND HIGHER, EXCEPT WHEN 'N'X' APPEARS.
  7. CIRCUIT NUMBER '1' AND ENGINEERING NUMBER TO APPEAR ON PARTS 3 CKTS. AND HIGHER.

3	AM3	REVISION	DATE	2008/07/25
2	AM3	REVISION	DATE	2008/07/25
1	AM4	REVISION	DATE	2008/07/25
SHT.	REV.	DESCRIPTION	DATE	2008/07/25

REVISION SYMBOLS

QUALITY SYMBOLS

GENERAL TOLERANCES (UNLESS SPECIFIED)	DIMENSION STYLE	SCALE	DESIGN UNITS	THIRD ANGLE PROJECTION
4 PLACES ± .010	MM/IN	1:1	INCH	THIRD ANGLE PROJECTION
3 PLACES ± .005				
2 PLACES ± 0.13 ± .01				
1 PLACE ± 0.25 ± .01				

DRAWN BY PEREZ-ARGUET 1988/02/25  
CHECKED BY PATEL 1988/02/25  
APPROVED BY LENZ 1988/02/25

DRAFT WHERE APPLICABLE MUST REMAIN WITHIN DIMENSIONS

MATERIAL NO. SEE CHART  
DOCUMENT NO. SD-2695

THIS DRAWING CONTAINS INFORMATION THAT IS PROPRIETARY TO MOLEX INCORPORATED AND SHOULD NOT BE USED WITHOUT WRITTEN PERMISSION

2695-N			2695-NE			2695-NR			2695-NRP			2695-NRPD			2695-NRP-BK		
PART NO.	ENG NO.	VOID	PART NO.	ENG NO.	VOID	PART NO.	ENG NO.	VOID	PART NO.	ENG NO.	VOID	PART NO.	ENG NO.	VOID	PART NO.	ENG NO.	VOID
22-01-2011	2695-1																
22-01-2021	2695-2		22-01-2022	2695-2E		22-01-2027	2695-2R		N/A	2695-2R		N/A	2695-2RPD		50-29-1557	2695-2RP-BK	
22-01-2031	2695-3		22-01-2032	2695-3E		22-01-2037	2695-3R		22-01-3027	2695-3RP			2695-3RPD		50-29-1558	2695-3RP-BK	
22-01-2041	2695-4					22-01-2047	2695-4R		22-01-3047	2695-4RP			2695-4RPD		50-29-1559	2695-4RP-BK	
22-01-2051	2695-5					22-01-2057	2695-5R		22-01-3057	2695-5RP		22-32-2051	2695-5RPD		50-29-1560	2695-5RP-BK	
22-01-2061	2695-6					22-01-2067	2695-6R		22-01-3067	2695-6RP			2695-6RPD		50-29-1561	2695-6RP-BK	
22-01-2071	2695-7		22-01-2072	2695-7E		22-01-2077	2695-7R		22-01-3077	2695-7RP			2695-7RPD		50-29-1562	2695-7RP-BK	
22-01-2081	2695-8					22-01-2087	2695-8R		22-01-3087	2695-8RP			2695-8RPD		50-29-1563	2695-8RP-BK	
22-01-2091	2695-9					22-01-2097	2695-9R		22-01-3097	2695-9RP			2695-9RPD		50-29-1564	2695-9RP-BK	
22-01-2101	2695-10					22-01-2107	2695-10R		22-01-3107	2695-10RP		22-32-2101	2695-10RPD		50-29-1565	2695-10RP-BK	
22-01-2111	2695-11					22-01-2117	2695-11R		22-01-3117	2695-11RP			2695-11RPD		50-29-1566	2695-11RP-BK	
22-01-2121	2695-12					22-01-2127	2695-12R		22-01-3127	2695-12RP			2695-12RPD		50-29-1567	2695-12RP-BK	
22-01-2131	2695-13					22-01-2137	2695-13R		22-01-3137	2695-13RP			2695-13RPD		50-29-1568	2695-13RP-BK	
22-01-2141	2695-14					22-01-2147	2695-14R		22-01-3147	2695-14RP			2695-14RPD		50-29-1569	2695-14RP-BK	
22-01-2151	2695-15					22-01-2157	2695-15R		22-01-3157	2695-15RP			2695-15RPD		50-29-1570	2695-15RP-BK	
22-01-2161	2695-16					22-01-2167	2695-16R		22-01-3167	2695-16RP			2695-16RPD		50-29-1571	2695-16RP-BK	
22-01-2171	2695-17					22-01-2177	2695-17R		22-01-3177	2695-17RP			2695-17RPD		50-29-1572	2695-17RP-BK	
22-01-2181	2695-18					22-01-2187	2695-18R		22-01-3187	2695-18RP			2695-18RPD		50-29-1573	2695-18RP-BK	
22-01-2191	2695-19					22-01-2197	2695-19R		22-01-3197	2695-19RP			2695-19RPD		50-29-1574	2695-19RP-BK	
22-01-2201	2695-20					22-01-2207	2695-20R		22-01-3207	2695-20RP			2695-20RPD		50-29-1575	2695-20RP-BK	
22-01-2211	2695-21					22-01-2217	2695-21R		22-01-3217	2695-21RP			2695-21RPD		50-29-1576	2695-21RP-BK	
22-01-2221	2695-22					22-01-2227	2695-22R		22-01-3227	2695-22RP			2695-22RPD		50-29-1577	2695-22RP-BK	
22-01-2231	2695-23					22-01-2237	2695-23R		22-01-3237	2695-23RP			2695-23RPD		50-29-1578	2695-23RP-BK	
22-01-2241	2695-24					22-01-2247	2695-24R		22-01-3247	2695-24RP			2695-24RPD		50-29-1579	2695-24RP-BK	
22-01-2251	2695-25					22-01-2257	2695-25R		22-01-3257	2695-25RP			2695-25RPD		50-29-1580	2695-25RP-BK	
22-01-2261	2695-26					22-01-2267	2695-26R		22-01-3267	2695-26RP			2695-26RPD		50-29-1581	2695-26RP-BK	
22-01-2271	2695-27					22-01-2277	2695-27R		22-01-3277	2695-27RP			2695-27RPD		50-29-1582	2695-27RP-BK	
22-01-2281	2695-28					22-01-2287	2695-28R		22-01-3287	2695-28RP			2695-28RPD		50-29-1583	2695-28RP-BK	
22-01-2291	2695-29					22-01-2297	2695-29R			2695-29RP			2695-29RPD				
	2695-30						2695-30R			2695-30RP			2695-30RPD				
	2695-31						2695-31R			2695-31RP			2695-31RPD				
	2695-32						2695-32R			2695-32RP			2695-32RPD				
	2695-33		22-01-2337	2695-33E		22-01-2337	2695-33R			2695-33RP			2695-33RPD				
	2695-34						2695-34R			2695-34RP			2695-34RPD				
	2695-35						2695-35R			2695-35RP			2695-35RPD				
	2695-36						2695-36R			2695-36RP			2695-36RPD				
	2695-37						2695-37R			2695-37RP			2695-37RPD				
	2695-38						2695-38R			2695-38RP			2695-38RPD				
	2695-39						2695-39R			2695-39RP			2695-39RPD				
	2695-40						2695-40R			2695-40RP			2695-40RPD				
						22-01-2062	2695-06R-5	5									
									22-01-5102	2695-IORP-2	2						
									22-01-5044	2695-4RP-3	3						
									22-01-5103	2695-IORP-5	5						
									22-01-5111	2695-IORP-5	5						
									22-01-5104	2695-IORP-9	9						

ADD. P/IN 22-01-2032 EC. NO. LCP2006-1024 2005/11/02 2007/11/02 LCP2006-1024 AM	QUALITY SYMBOLS 	GENERAL TOLERANCES (UNLESS SPECIFIED) mm ±0.15 INCH ±0.005 3 PLACES ±0.15 2 PLACES ±0.15 1 PLACE ±0.15 ANGULAR ±1/2°	DIMENSION STYLE MM/IN	SCALE ---	DESIGN UNITS INCH	THIRD ANGLE PROJECTION 
		DRAWN BY PEREZ-ARGUET CHECKED BY PATEL APPROVED BY LENZ DATE 1988/02/25 DATE 1988/02/25 DATE 1988/02/25	TITLE (2.54)/.100 HOUSING FOR KK CRIMP TYPE TERMINALS 2695 SERIES DRAWING	MATERIAL NO. SEE CHART	DOCUMENT NO. SD-2695	SHEET NO. 2 OF 3

DRAFT WHERE APPLICABLE MUST REMAIN WITHIN DIMENSIONS  
 THIS DRAWING CONTAINS INFORMATION THAT IS PROPRIETARY TO MOLEX INCORPORATED AND SHOULD NOT BE USED WITHOUT WRITTEN PERMISSION

2695-NC*																	
PART NO.	ENG. NO.	VOIDS	PART NO.	ENG. NO.	VOIDS	PART NO.	ENG. NO.	VOIDS	PART NO.	ENG. NO.	VOIDS	PART NO.	ENG. NO.	VOIDS	PART NO.	ENG. NO.	VOIDS
N/A	2695-1C																
	2695-2C																
	2695-3C																
	2695-4C																
	2695-5C																
	2695-6C																
	2695-7C																
	2695-8C																
	2695-9C																
	2695-10C																
	2695-11C																
	2695-12C																
	2695-13C																
	2695-14C																
	2695-15C																
	2695-16C																
	2695-17C																
	2695-18C																
	2695-19C																
	2695-20C																
	2695-21C																
	2695-22C																
	2695-23C																
	2695-24C																
	2695-25C																
	2695-26C																
	2695-27C																
	2695-28C																
	2695-29C																
	2695-30C																
	2695-31C																
	2695-32C																
	2695-33C																
	2695-34C																
	2695-35C																
	2695-36C																
	2695-37C																
	2695-38C																
	2695-39C																
	2695-40C																

UPDATE TITLE BLOCK EC NO. LCP2004-1024 2005/11/01 DRAWN BY AM LCP2004-1024 2005/11/01 CHECKED BY AM LCP2004-1024 2005/11/01 APPROVED BY AM LCP2004-1024 2005/11/01	QUALITY SYMBOLS 	GENERAL TOLERANCES (UNLESS SPECIFIED) <table border="1"> <tr><th></th><th>mm</th><th>INCH</th></tr> <tr><td>4 PLACES</td><td>±.0125</td><td>±.0005</td></tr> <tr><td>3 PLACES</td><td>±.0150</td><td>±.0006</td></tr> <tr><td>2 PLACES</td><td>±.0175</td><td>±.0007</td></tr> <tr><td>1 PLACE</td><td>±.0200</td><td>±.0008</td></tr> </table>		mm	INCH	4 PLACES	±.0125	±.0005	3 PLACES	±.0150	±.0006	2 PLACES	±.0175	±.0007	1 PLACE	±.0200	±.0008	DIMENSION STYLE MM/IN DRAWN BY DATE SAM IEC 1989/10/30 CHECKED BY DATE PATEL 1989/10/30 APPROVED BY DATE LENZ 1989/10/30	SCALE --- DESIGN UNITS INCH THIRD ANGLE PROJECTION 	TITLE (2.54)/.100 HOUSING FOR KK CRIMP TYPE TERMINALS 2695 SERIES DRAWING MOLEX INCORPORATED MATERIAL NO. LCP2004-1024 DOCUMENT NO. SD-2695 SHEET NO. 3 OF 3
		mm	INCH																	
	4 PLACES	±.0125	±.0005																	
	3 PLACES	±.0150	±.0006																	
2 PLACES	±.0175	±.0007																		
1 PLACE	±.0200	±.0008																		
DRAFT WHERE APPLICABLE MUST REMAIN WITHIN DIMENSIONS		SEE CHART THIS DRAWING CONTAINS INFORMATION THAT IS PROPRIETARY TO MOLEX INCORPORATED AND SHOULD NOT BE USED WITHOUT WRITTEN PERMISSION																		