

Switch Language

English

Need Assistance?

Contact Us
Find a Distributor
Order Samples
Tech Library

Printer-friendly page

Email this page

[Home](#) [Crimp Housings](#) [Datasheet](#)

Part Number: 0039012045

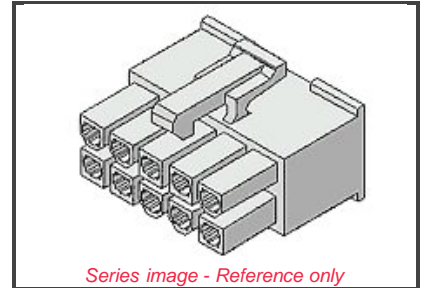
Status: Active **Overview: Mini-Fit Jr.™**

Description: 4.20mm (.165") Pitch Mini-Fit Jr.™ Receptacle Housing, Dual Row, UL 94V-0, 4 Circuits

Documents:

Note - Please disable browser pop-up blockers for documents on www.molex.com

- [Drawing \(PDF\)](#) [Product Specification PS-5557-003 \(PDF\)](#)
- [Product Specification PS-5557-004 \(PDF\)](#) [Product Specification PS-5557-010 \(PDF\)](#)
- [Product Specification PS-5557-011 \(PDF\)](#) [Product Specification PS-5557-012 \(PDF\)](#)
- [Product Specification PS-5557-013 \(PDF\)](#) [Product Specification PS-5557-015 \(PDF\)](#)
- [Product Specification PS-5557-016 \(PDF\)](#) [Product Specification PS-5557-021 \(PDF\)](#)
- [Product Specification PS-5557-039 \(PDF\)](#) [Product Specification PS-5557-040 \(PDF\)](#)
- [Product Specification PS-5557-041 \(PDF\)](#) [Product Specification PS-5557-042 \(PDF\)](#)
- [Product Specification PS-5557-043 \(PDF\)](#) [Product Specification PS-5557-044 \(PDF\)](#)
- [3D Model](#) [Test Summary \(PDF\)](#)
- [Related Catalog Page \(PDF\)](#)



EU RoHS **China RoHS**
ELV and RoHS Compliant



Need more information on product compliance?

Email productcompliance@molex.com

Please visit the [Contact Us](#) section for any non-product compliance questions.

Order Products:

[Check Distributor Inventory](#) [Add to My Parts](#)
[Request Samples](#)

Part Detail: (show all)

[General](#) [Physical](#) [Electrical](#) [Material Info](#)

General

Product Family Crimp Housings
Series [5557](#)
Comments Glow Wire Equivalent Part Number [50304461](#), [50362301](#)
Overview [Mini-Fit Jr.™](#)
Product Name Mini-Fit Jr.™

Physical

Breakaway No
Circuits (maximum) 4
Color - Resin Ivory
Flammability 94V-0
Flammability 94V-2
Gender Female
Material - Resin Nylon
Number of Rows 2
Packaging Type Bag
Panel Mount No
Pitch - Mating Interface (in) 0.165 In
Pitch - Mating Interface (mm) 4.20 mm
Pitch - Term. Interface (in) 0.165 In

Search Parts in this Series

[5557 Series](#)

Mates With

[5559d](#), [5566vw](#), [5566vwo](#), [5569rdf](#), [5569rdp](#), [43810a](#), [43810b](#), [43810c](#), [43810d](#), [44068a](#), [44068b](#), [44068c](#), [44068d](#), [44281](#), [44472dw](#), [44472dwo](#), [87427](#), [87427r](#), [87427rf](#), [42404](#), [44474](#), [42440](#), [43879](#), [42475](#)

Use With

[5556](#), [44476](#), [44485](#), [41995](#)

Pitch - Term. Interface (mm)	4.20 mm
Polarized to Mating Part	Yes
Stackable	No
Temperature Range - Operating	-40°C to +105°C

Electrical

CSA	LR19980
TUV	R75142
UL	E29179

Material Info

Old Part Number	5557-04R-210
-----------------	--------------

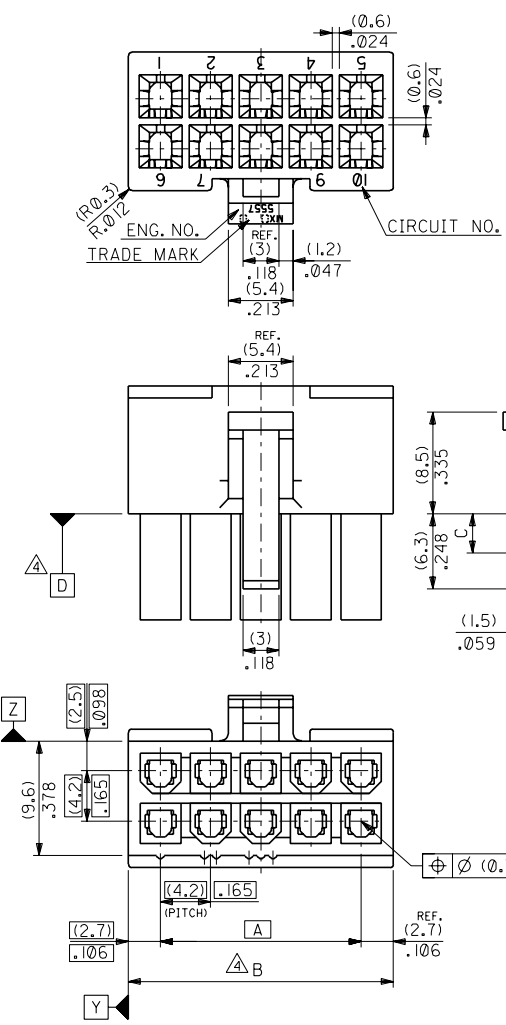
Reference - Drawing Numbers

Product Specification	PS-5557-003
Product Specification	PS-5557-004
Product Specification	PS-5557-010
Product Specification	PS-5557-011
Product Specification	PS-5557-012
Product Specification	PS-5557-013
Product Specification	PS-5557-015
Product Specification	PS-5557-016
Product Specification	PS-5557-021
Product Specification	PS-5557-039
Product Specification	PS-5557-040
Product Specification	PS-5557-041
Product Specification	PS-5557-042
Product Specification	PS-5557-043
Product Specification	PS-5557-044
Sales Drawing	SD-5557-NR-210

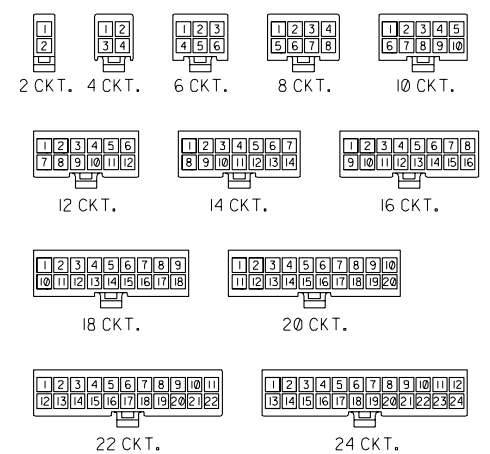
ENG. NO. SD-5557-NR-210
EDP NO. 39-01-2**5

ALL DIMENSIONS IN METRIC DO NOT SCALE DRAWING

8 7 6 5 4 3 2 1



NOTES
 1. TERMINAL : 5556 SERIES
 2. MATE WITH : 5559 SERIES
 5566 SERIES
 5569 SERIES
 3. (METRIC) VALUES SHOWN GOVERN OVER ENGLISH CONVERSION VALUES.
 △ TO BE MEASURED AT POSITION OF □ SURFACE.



CIRCUIT SIZE LAYOUT (SCALE: 1-1)

(3.6)	(47.4)	2.031	(42)	1.819	39-01-2245	5557-24R-210	24
.142	(43.2)	1.866	(37.8)	1.654	-2225	-22R-210	22
	(39)	1.701	(33.6)	1.488	-2205	-20R-210	20
	(34.8)	1.535	(29.4)	1.323	-2185	-18R-210	18
	(30.6)	1.37	(25.2)	1.158	-2165	-16R-210	16
	(26.4)	1.205	(21)	.992	-2145	-14R-210	14
(3.3)	(22.2)	1.039	(16.8)	.827	-2125	-12R-210	12
.129	(18)	.874	(12.6)	.661	-2105	-10R-210	10
	(13.8)	.709	(8.4)	.496	-2085	-08R-210	8
	(9.6)	.543	(4.2)	.331	-2065	-06R-210	6
	(5.4)	.378		.165	-2045	-04R-210	4
		.213			39-01-2025	5557-02R-210	2
	C	B	A		EDP. NO.	ENG. NO.	NO. OF CKTS.

材料 MATERIAL		66NYLON (UL94V-0)		MOLEX-JAPAN CO.,LTD. 日本モレックス株式会社	
仕上げ FINISH		---		EDP. NO. 39-01-2**5	
適用電線範囲 WIRE RANGE		---		ENG. NO. SD-5557-NR-210	
被覆外径 INS. RANGE		---		REV F	
DRAWN BY 90/2/22		CHK'D BY 97/0/08		TITLE 名称 NEW MINI FIT CONN. REC. HOUSING	
APP'D BY 97/0/08		M.FUKUSHIMA		尺度 SCALE 3-1	
REVISION RECORD		REVISION RECORD		REVISION RECORD	
角 度 ANGLE		3°		角 度 ANGLE	
30以上 OVER		18.4		角 度 ANGLE	
10以上 未過 UNDER		18.3		角 度 ANGLE	
10 UNDER		10.2		角 度 ANGLE	
記号 LTR		変更内容 REVISION RECORD		角 度 ANGLE	
一般公差 GENERAL TOLERANCES		REVISION RECORD		角 度 ANGLE	

THIS DRAWING CONTAINS INFORMATION THAT IS PROPRIETARY TO MOLEX(JAPAN) AND SHOULD NOT BE USED WITHOUT WRITTEN PERMISSION
 本図面は日本モレックス(株)の所有する情報を含むもので 当社の許可なく複製を禁止する。 MXJ-8