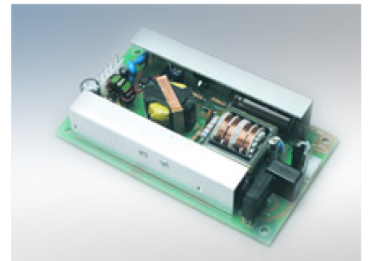




Medical Power Supplies - Open Frame 7-250W Series

Elpac open frame medical grade power supplies are preferred by customers who want to incorporate the AC/DC power supply into their system, delivering a complete, compact package.



- Universal AC Inputs, 85-264
- Single, Dual, and Triple Outputs
- Medical agency requirements including UL2601-1 and EN60601-1

Model Numbers:

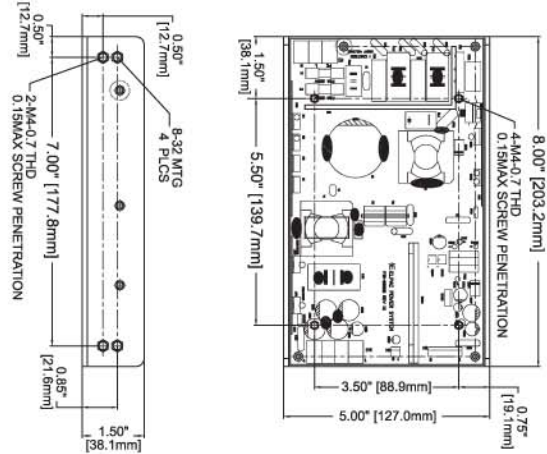
Model	Volts	Input AC	Power	Power Supply Type	PFC	CEC	RoHS	Class	
MSM07	5,12,15,24,28	100-240	7W	Switching Regulated	No	No	No	II	
MSM20	12,15,24	100-240	20W	Switching Regulated	No	No	No	I	
MSM28	12,15,28	100-240	28W	Switching Regulated	No	No	No		

MSM75	12,15,24,28	90-264	75W	Switching Regulated	No	No	No		
MSM80	9,12,15,24	85-264	80W	Switching Regulated	No	No	Yes	I	
MVA100	12,15,18,24	100-240	100W	Switching Regulated	No	No	Yes	I	
MSMP115	12,15,24,28	85-264	115W	Switching Regulated	Yes	No	Yes		
MSMP150F	12,15,24,28,48	100-240	150W	Switching Regulated	Yes	No	Yes	I	
MSMP250F	12,15,24,28,48	100-240	250W	Switching Regulated	Yes	No	Yes	I	

MSMP 250 Series

250 Watt Medical Grade Power Supply

- Wide Range AC Input
- Fully Regulated DC Output
- Output Floating
- High Efficiency
- Power Factor Correction
- Medical Grade and ITE Approval
- RoHS Compliant
- 5 Year Warranty



SPECIFICATIONS

INPUT

Voltage	100 - 240 VAC		
Current	5.0 Amp @ 100 VAC		
Frequency	47 - 63 Hz		
Max. Earth	Test Voltage	Normal	Single
Leakage current	132 VAC 60 Hz	100 uA	200 uA
	264 VAC 50 Hz	180 uA	360 uA

OUTPUT

Total regulation	< +/- 5%
Set point accuracy	< +/- 3% at 60% load
Hold up time	> 20 ms min at full load, 115 VAC
Over voltage protection	Built-in
Over current protection	Built-in
Short circuit protection	Pulsing mode, auto recovery
Ripple/noise (Vp-p)	< 1% (20 MHz bandwidth)

Pinout	1	2	3	4	5	6	7	8
Input H1	AC Line	AC Neutral	GND	N/A	N/A	N/A	N/A	N/A
Signal H2	DC-Good	AC-Fail	Remote* On/Off	+ Sense	- Sense	N/A	Return*	+5V Aux
Output H4	V1	V1	Ret	Ret	N/A	N/A	N/A	N/A

* Remote On/Off is normally Off. To turn supply on, the Remote On/Off should be connected to the Return (H2 Pin 3, H2 Pin 7)

Input and Output Connections

Input connector (H1) = AMP p/n BTB555-10-03
 Signal connector (H2) = AMP p/n 640456-8 or equivalent
 Signal mating connector = AMP p/n 640440-8 or equivalent
 Output connector (H4) = AMP p/n BTB555-10-04

ENVIRONMENTAL

Operating temperature	0° C to 50° C
Storage temperature	-40° C to 85° C
Weight	2.1 lbs

SAFETY

cTUVus		
Medical grade	UL 60601-1	CSA C22.2 No.601.1-M90
	CB per IEC 60601-1	
ITE grade	UL 60950-1	CSA C22.2 No.60950-1
	CB per IEC 60950-1	
CE marked to LVD		

EMI/EMC

Emissions	CISPR 11 and FCC Part 15, Class B
	EN61000-3-2, -3, Class D
Immunity	EN61000-4-2, -3, -4, -5, -6, -8, -11

Model No.	Volt	Power	Current	Eff @ 115VAC (Typ)
MSMP25012F	12V	20.0A	28.0A	87%
MSMP25015F	15V	16.5A	23.0A	88%
MSMP25024F	24V	10.5A	14.5A	87%
MSMP25028F	28V	9.0A	12.5A	88%
MSMP25048F	48V	5.3A	7.4A	88%

Current A = Max. continuous current with unrestricted convection
 Current B = Max. continuous current with 26 CFM air flow
 350 Watts of continuous power with forced air,
 250 Watts with unrestricted natural convection
 Fan connector (H3) = AMP p/n 640456-2
 Fan mating connector = AMP p/n 640440-2

1	2
+	-