

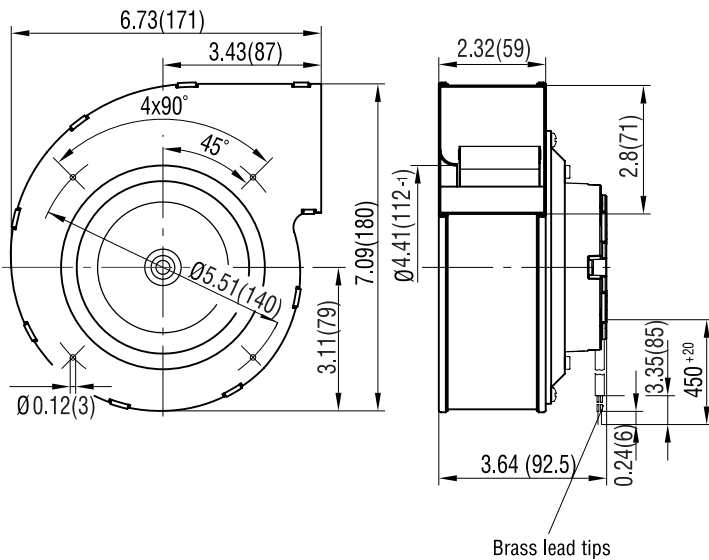
G3G133 Series Centrifugal Blower

Ø 133mm, EC-i



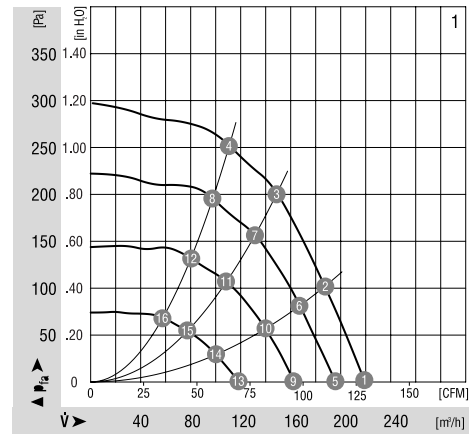
- AC input, single inlet, forward-curved centrifugal blower with integrated electronics.
- Cable exit: variable
- Housing of die-cast aluminium; impeller of galvanised sheet-steel.
- Variable mounting position.
- Direction of rotation is CW as seen from intake side.
- Maintenance-free ball bearings.
- Technical features: integrated electronics, PWM/Lin input, speed output.
- UL and CSA approvals on request.

Part Number	Curve	CFM @ 0	VAC	Hertz	Power (W)	dBA	Max Amb. Temp. C	Bearing Type	Features	Wgt. (lbs)
G3G133-DD05-02	1	129.5	230	50/60	41	64	60	Ball	Leads	3.31



	n [RPM]	P _i [W]	η _{IL} [%]	Lp _A [dBA]		n [RPM]	P _i [W]	η _{IL} [%]	Lp _A [dBA]
1 ①	1970	41	—	64	1 ⑨	1500	18	—	55
1 ②	2090	36	45	62	1 ⑩	1570	16	45	54
1 ③	2240	30	53	60	1 ⑪	1640	13	53	51
1 ④	2400	23	51	59	1 ⑫	1730	10	51	50
1 ⑤	1780	30	—	60	1 ⑬	1100	9	—	49
1 ⑥	1870	26	45	59	1 ⑭	1140	8	45	47
1 ⑦	2000	21	53	56	1 ⑮	1200	7	53	44
1 ⑧	2120	17	51	56	1 ⑯	1250	6	51	41

Curve



ebmpapst

e-mail: sales@us.ebmpapst.com · TEL: 860-674-1515 · FAX: 860-674-8536

ebm-papst Inc., 100 Hyde Road, Farmington, CT 06034 USA

ebm-papst Inc., 2006 © ebm-papst Inc. reserves the right to change any specifications or data without notice