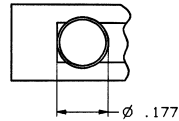
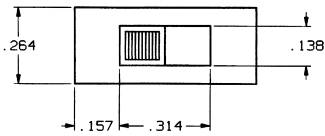


CONVERSION CHART		CONVERSION CHART	
INCH	MM	INCH	MM
.010	0.25	.228	5.8
.016	0.40	.296	7.5
.020	0.50	.327	8.3
.031	0.80	.394	10.0
.035	0.89	.520	13.20
.043	1.1	.551	14.0
.059	1.50	.740	18.8

D
C
B
A



MHS-233K LEVER

SPECIFICATIONS:

MATERIALS:
CASE: STEEL, NICKEL PLATED.
ACTUATOR: PBT UL94V-2.
MOVABLE CONTACT: COPPER ALLOY, SILVER PLATED.
STATIONARY CONTACT: COPPER ALLOY, SILVER PLATED.
TERMINALS: COPPER ALLOY, SILVER PLATED.

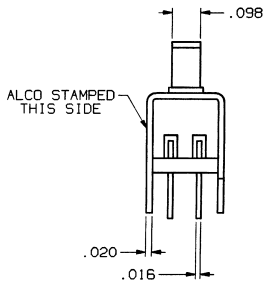
ELECTRICAL:
CONTACT RATING: 300 ma. @ 125 VAC.
CONTACT RESISTANCE: 20 MILLIOHMS MAX. INITIAL.
INSULATION RESISTANCE: 1,000 MEGOHMS MIN.
DIELECTRIC STRENGTH: 500 VOLTS RMS AT SEA LEVEL

MECHANICAL:
ACTUATION FORCE: 250g, +200g, -150g.

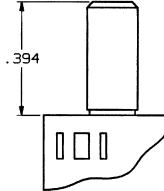
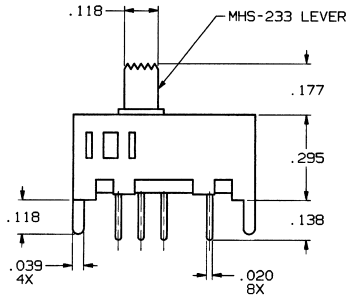
ENVIRONMENTAL:
OPERATING TEMPERATURE: -20°C TO +100°C (-4°F TO +212°F)
STORAGE TEMPERATURE: -40°C TO +100°C (-40°F TO +212°F)

NOTES:

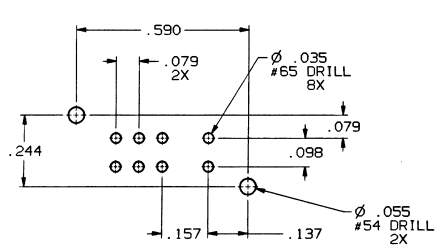
1. INTERPRET DRAWING PER ASME Y14.5M-1994.



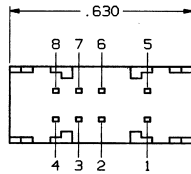
ALCO STAMPED THIS SIDE



MHS-233K LEVER



P.C. HOLE LAYOUT
PC LAYOUT TOLERANCE: ±.002



MHS-233K	.079	2 TO 1 6 TO 5	2 TO 3 6 TO 7	2 TO 4 6 TO 8
MHS-233	.079	2 TO 1 6 TO 5	2 TO 3 6 TO 7	2 TO 4 6 TO 8
MODEL No.	TRAVEL (APPROX.)			

TERMINALS CONNECTED WHEN SLIDE IS IN POSITIONS SHOWN.

NOTE:
TERMINAL DESIGNATION NUMBERS ARE FOR REFERENCE ONLY, AND DO NOT APPEAR ON SWITCHES

THIS IS A C.A.D. GENERATED DRAWING.
DO NOT MAKE MANUAL REVISIONS TO MASTER.



OUTLINE DRAWING

SPECIFICATIONS ARE SUBJECT TO CHANGES WITHOUT NOTICE

REV	DATE	DESCRIPTION
1	3-2-81	REVISED & REDRAWN
2	3-17-85	REVISED & REDRAWN
3	3-17-85	REVISED & REDRAWN
4	3-17-85	REVISED & REDRAWN
5	3-17-85	REVISED & REDRAWN
6	3-17-85	REVISED & REDRAWN
7	3-17-85	REVISED & REDRAWN
8	3-17-85	REVISED & REDRAWN
9	3-17-85	REVISED & REDRAWN
10	3-17-85	REVISED & REDRAWN

UNLESS OTHERWISE SPECIFIED DIMENSIONS ARE IN INCHES DO NOT SCALE PRINT	FILE NAME: 800170UT	DIRECTORY: SLOSHTCH	ORIGINAL DATE OF DRAWING: 3-2-81
TOLERANCES (EXCEPT AS NOTED) ANGULAR = ±1° DECIMAL .XX = ± DECIMAL .XXX = ±.010 DECIMAL .XXXX = ±	MATERIAL: SEE SPECIFICATIONS	FINISH: SEE SPECIFICATIONS	DRAWN: V.J.M. DATE: 3-2-81
THIRD ANGLE PROJECTION AUGAT CONFIDENTIAL This document contains information which is the exclusive property of Augat Inc. Distribution, reproduction or use by others is not permitted without the expressed written consent of Augat Inc.	APPROVED: R.D. DATE: 3-4-81	CODE IDENT. NO. 91506	DWG. SIZE C
		NEXT ASSY:	

AUGAT INC.		452 JOHN DIETSCH BLVD. ATTLEBORO FALLS, MASS. 02763	
TITLE: OUTLINE DRAWING			
MHS - SLIDE SWITCH (DP-3T) MHS-233 SERIES			
DWG. NO.	80017-SD	REV.	B
PRODUCT CODE:	CST	SCALE:	SHEET 1 OF 1