



➔ **Product Type**  
**Rotary Switch**

➔ **Product Series**  
**700-Series**

The 700-Series rotary switches are AC/DC rated, 4-position, single pole switches. These switches feature a nylon actuator and shaft in a metal clad construction. They utilize a self-cleaning wiping action and silver plated contact system.

<b>Certifications</b>	UL CSA
<b>Number of Poles</b>	1 pole
<b>Ratings</b>	2A 250VAC 4A 125VAC 1A 125V
<b>Dielectric Strength</b>	1,000 V RMS (minimum)
<b>Insulation Resistance</b>	100 megohms (minimum)
<b>Base Material</b>	Steel/Zinc Plate
<b>Actuator Style</b>	Nylon Knob
<b>Actuator Material</b>	Nylon

**Bushing Material**  
**Terminal Options**  
**Mounting Method**  
**Mounting Hole Dimensions**  
**Value Added**

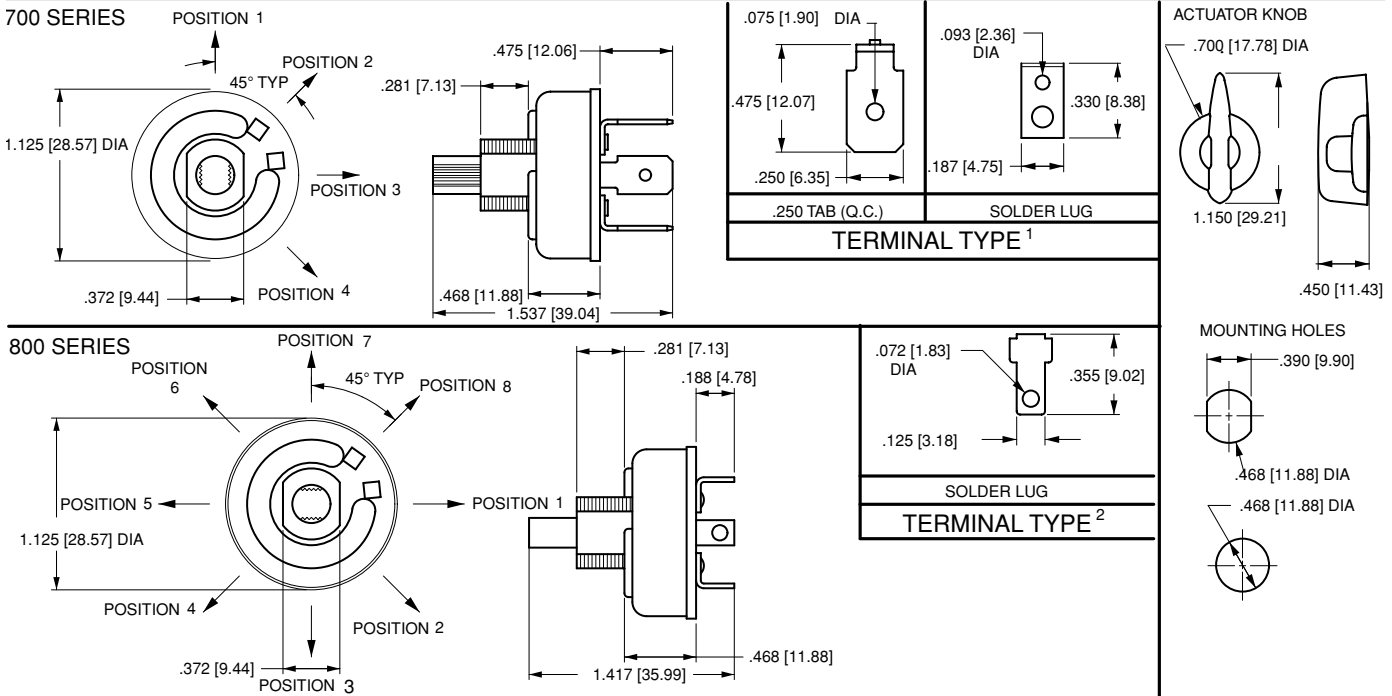
Brass/Nickel Plate  
Solder Lugs  
.250 QC Tabs  
Bushing Mount  
.468" diameter; 11.88mm diameter  
Eight detent positions available  
Special packaging

**700/800-Series Rotary Switches**



The 700 and 800-Series are single pole multi-position, general purpose rotary switches. These switches feature a nylon actuator in a metal clad construction along with a self-cleaning silver plated contact design. The 700 and 800-Series are typically used in applications requiring multi-position speed controls, such as electric fans.

**Dielectric Strength:**  
UL, CSA 1,000V (minimum)  
**Insulation Resistance:**  
100 Megohms (minimum)  
**Base Material:**  
Steel/Zinc Plate  
**Actuator Material:**  
Brass/Nickel Plate



**700-1A - BL**

<sup>1</sup> Base Part Number      <sup>2</sup> Actuator Color

**1 BASE PART NUMBER: SERIES/POLES/CIRCUITRY/RATING<sup>1</sup>/TERMINATION<sup>2</sup>**

**2A 250VAC; 4A 125VAC; 1A 125V**

Solder Lugs	.250 Tabs	Position 1	Position 2	Position 3	Position 4	
-	<b>700-A</b>	OFF	ON	ON	ON	
<b>700-1</b>	<b>700-1A</b>	OFF	ON	-	-	
<b>700-2</b>	<b>700-2A</b>	OFF	ON	ON	ON	repeating 8 positions
<b>700-3</b>	<b>700-3A</b>	OFF	ON	ON	OFF	
<b>700-4</b>	<b>700-4A</b>	OFF	ON	ON	-	
<b>700-5</b>	<b>700-5A</b>	OFF	ON	OFF	-	
<b>700-6</b>	<b>700-6A</b>	-	ON	OFF	ON	
<b>700-7</b>	<b>700-7A</b>	-	ON	ON	-	
<b>700-8</b>	<b>700-8A</b>	-	ON	ON	ON	
<b>700-9</b>	<b>700-9A</b>	OFF	ON	OFF	ON	

**3A 250VAC; 6A 125VAC**

Switch Positions	OFF Position
<b>800-2</b> 2 positions	<b>800-A</b> 1st position
<b>800-3</b> 3 positions	<b>800-A2</b> 2nd position
<b>800-4</b> 4 positions	<b>800-A3</b> 3rd position
<b>800-5</b> 5 positions	<b>800-A4</b> 4th position
<b>800-6</b> 6 positions	<b>800-A5</b> 5th position
<b>800-7</b> 7 positions	<b>800-A6</b> 6th position
<b>800-8</b> 8 positions	<b>800-A7</b> 7th position
	<b>800-A8</b> 8th position

**2 ACTUATOR COLOR**  
**BL** black

NOTES  
1 700-2 and 700-2A feature 8 detent positions.  
2 800-Series terminal is a combination solder lug and quick connect.