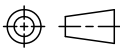






CUSTOMER DATA

PART NO.
1432797-1SHT. 1
OF 2

| | | | | | | | | |
|---|------------------------|------------------|--------------|--|---|-----------|---------------|------|
| DRAWN E.SIMPSON | APPROVAL B. TOEPFER | DATE 05-26-05 | SCALE 1:1 | CUSTOMER TYCO_ELECTRONICS_STANDARD | | | | |
| TOLERANCE 0.X = +/- UNLESS 0.XX = +/- SPECIFIED 0.XXX = +/- OTHERWISE ANGLES = +/- | | | |  DO NOT SCALE THIS DRAWING | CHANGES | | | |
| | | | | | REV. | DATE | CO | APP. |
| | | | | |  | 08-22-05 | RELEASE EDS | B.T. |
| | | | | |  | 28APR2010 | ECR-10-008018 | BT |

ELECTRICAL CHARACTERISTICS: (ALL DATA APPLIES @ 23°C UNLESS OTHERWISE SPECIFIED)COIL DATA:

NOMINAL VOLTAGE: 24 VDC
OPERATE VOLTAGE: 15.6 VDC MAXIMUM
RELEASE VOLTAGE: 2.4 VDC MINIMUM
COIL RESISTANCE: 360 OHMS +/- 10%
OPERATE TIME: 8 mSEC. MAXIMUM EXCLUDING BOUNCE
RELEASE TIME: 5 mSEC. MAXIMUM EXCLUDING BOUNCE
TEMPERATURE RANGE: OPERATING -40°C TO +85°C


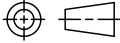
CONTACT DATA: (CONTACT DATA IS FORMATTED N.O./N.C.)

CONTACT ARRANGEMENT: 1 FORM C (SPDT)
CONTACT MATERIAL: AgSnO (SILVER TIN-OXIDE)
CONTACT MILLIVOLT DROP: 200mv @ 35A ON N.O. CONTACTS (AFTER SWITCHING)
250mv @ 20A ON N.C. CONTACTS (AFTER SWITCHING)
MAXIMUM MAKE CURRENT: 90A/30A (LAMP) @ 16 VDC
MAXIMUM BREAK CURRENT: 40A/30A @ 16 VDC RESISTIVE
MAXIMUM CONTINUOUS CURRENT: 40A/30A @ 23°C, 35A/20A @ 85°C
INITIAL BREAKDOWN CURRENT: 500V RMS CONTACTS TO COIL

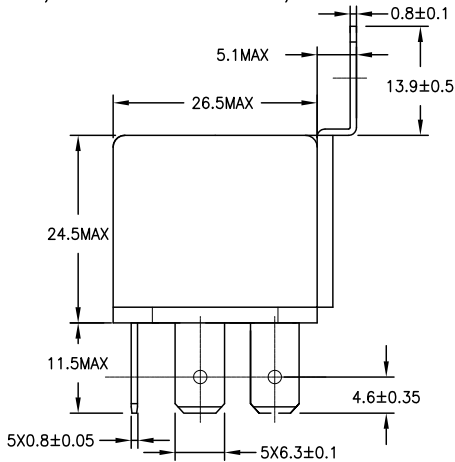
EXPECTED LIFE: 100,000 OPERATIONS, 40 A, 14 VDC RESISTIVE ON NORMALLY OPEN CONTACT

MECHANICAL CHARACTERISTICS:

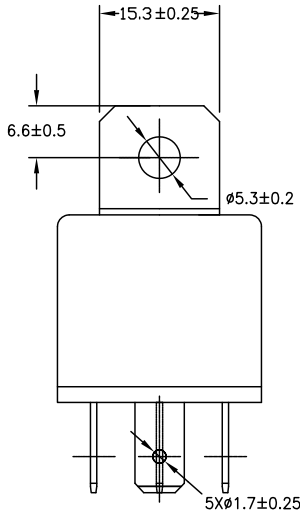
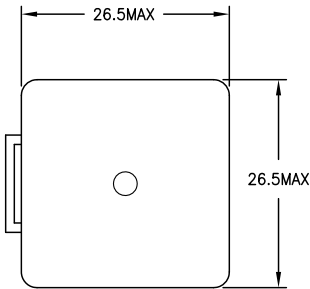
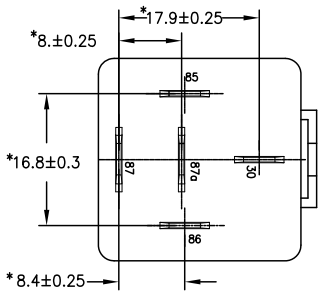
EXPECTED LIFE: 10 MILLION OPERATIONS, NO CONTACT LOAD
TERMINALS: BRASS, UNPLATED

| | | | | | | | |
|---|------------------------|------------------|--------------|---|--|-----------------------|----------------|
|  | | | | CUSTOMER DATA | | PART NO. 1432797-1 | SHT. 2 OF 2 |
| DRAWN E.SIMPSON | APPROVAL B. TOEPFER | DATE 05-26-05 | SCALE 1:1 | CUSTOMER TYCO_ELECTRONICS_STANDARD | | | |
| TOLERANCE 0.X = +/- UNLESS 0.XX = +/- SPECIFIED 0.XXX = +/- OTHERWISE ANGLES = +/- | | | |  | | REV B | |
| | | | | DO NOT SCALE THIS DRAWING | | MILLIMETERS | |

MARKING TO INCLUDE:
 TYCO ELECTRONICS NAME, TYCO ELECTRONICS PART NUMBER, SCHEMATIC,
 COIL VOLTAGE, COUNTRY OF ORIGIN, AND DATE CODE



K ASPECT



* TERMINAL LOCATIONS
 APPLY AT THE BASE
 OF THE TERMINALS

