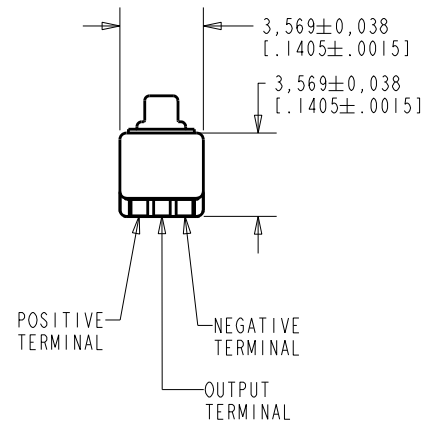
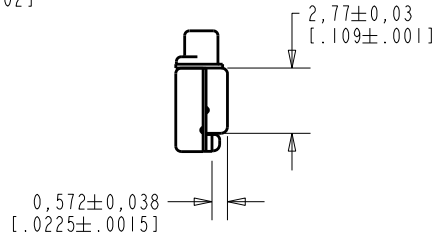
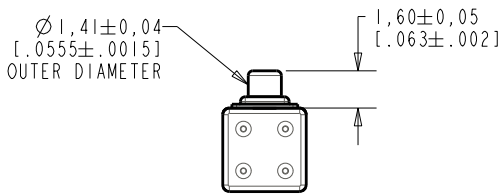
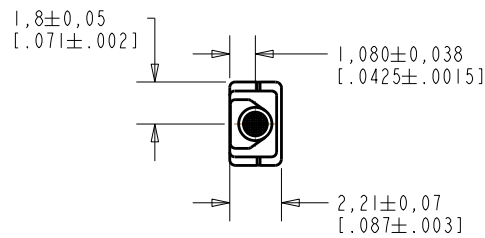


EM-24068-000

SHT 1.1

NOTE:

1. INCREASED PRESSURE AT SOUND INLET CAUSES A POSITIVE GOING VOLTAGE TO APPEAR AT THE OUTPUT TERMINAL, RELATIVE TO THE NEGATIVE TERMINAL.



NOMINAL WEIGHT
.08 GRAM

DIMENSIONS IN MILLIMETERS [INCHES]

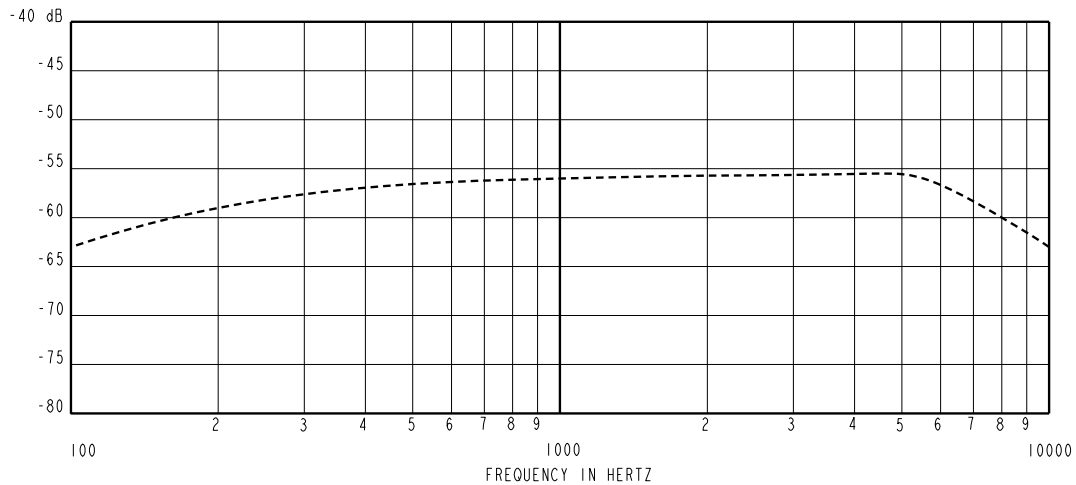
| Revision | C.O. # | Implementation Date | RELEASE LEVEL | REVISION |
|----------------------|-----------|---------------------|---------------|----------|
| B | M10102034 | 6-18-08 | Active | B |
| A | M10101293 | 11-27-06 | | |
| SCALE: 4:1 | | | DR. BY | DATE |
| DO NOT SCALE DRAWING | | | LSY | 11-27-06 |
| | | | CK. BY | DATE |
| TITLE: MICROPHONE | | EM-24068-000 | GJP | 12-11-06 |
| OUTLINE DRAWING | | SHT 1.1 | APP. BY | DATE |
| | | | GJP | 12-11-06 |

KNOWLES ELECTRONICS
ITASCA, ILLINOIS U.S.A.

RE111ASIZE.FRM

Rev: B

SENSITIVITY IN dB RELATIVE TO 1.0 VOLT/0.1 Pa (N/M²)
FOR CONDITIONS SHOWN BELOW.



| FREQUENCY | SENSITIVITY | | | DEVICE CONFORMITY | |
|-----------|-------------|-------|-------|------------------------------|------|
| | MIN. | NOM. | MAX. | RANGE OF DEVIATION FROM 1KHz | |
| 100 | --- | -63.0 | --- | -10.0 | -3.0 |
| 1000 | -59.0 | -56.0 | -53.0 | 0.0 | 0.0 |
| 4800 | --- | -55.5 | --- | -3.0 | +3.0 |

NOTES:

- CASE CONNECTED TO NEGATIVE TERMINAL.
- MICROPHONE TO BE FUNCTIONAL WITH 10 VDC SUPPLY.
- TYPICAL SENSITIVITY TO HUMIDITY AT 1000Hz IS 0.03 dB/%RH
- SENSITIVITY AND NOISE VALUES INDICATED ON THIS SPECIFICATION ARE VALID AT 50% HUMIDITY.
- CAPACITANCE MEASUREMENT MADE WITH BOONTON MODEL 7200 OR EQUIVALENT WITH APPLIED AC VOLTAGE OF 15 mVOLTS AT 1 MHz AND 0 VDC. INCLUDES CIRCUIT CAPACITANCE IN PARALLEL WITH CAPACITOR.

| PORT LOCATION | DC SUPPLY | AMPLIFIER CURRENT DRAIN | SENSITIVITY CHANGE ON REDUCING SUPPLY TO 0.9VDC | "A" WEIGHTED NOISE (RE 1 VOLT) | OUTPUT IMPEDANCE OHMS | | |
|---------------|-----------|-------------------------|---|--------------------------------|-----------------------|------|------|
| | | | | | MIN. | NOM. | MAX. |
| 12S | 1.3V | 50 µA MAX. | 3 dB MAX. | 31.0 dB MAX. | 2800 | 4400 | 6800 |

| Revision | C.O. # | Implementation Date | RELEASE LEVEL | REVISION |
|----------|-----------|---------------------|---------------|----------|
| B | MI0102034 | 6-18-08 | Active | B |
| A | MI0101293 | 11-27-06 | | |

KNOWLES ELECTRONICS
ITASCA, ILLINOIS U.S.A.

| | | | |
|--|--|---------|----------|
| WHEN TEST LIMITS ARE USED TO ESTABLISH INCOMING INSPECTION ACCEPTANCE/REJECTION CRITERIA, CORRELATION OF TEST EQUIPMENT WITH KNOWLES IS ALSO REQUIRED FOR ELIMINATION OF EQUIPMENT AND TEST METHOD VARIATION | | DR. BY | DATE |
| | | LSY | 11-27-06 |
| TITLE: MICROPHONE | | CK. BY | DATE |
| PERFORMANCE SPECIFICATION | | GJP | 12-11-06 |
| EM-24068-000 | | APP. BY | DATE |
| SHT 2.1 | | GJP | 12-11-06 |