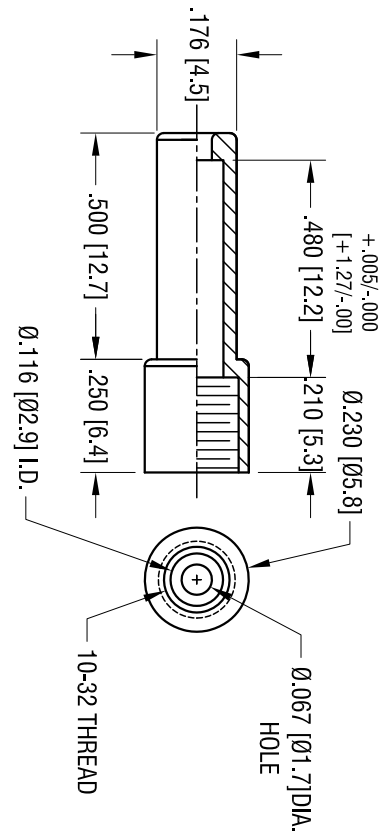
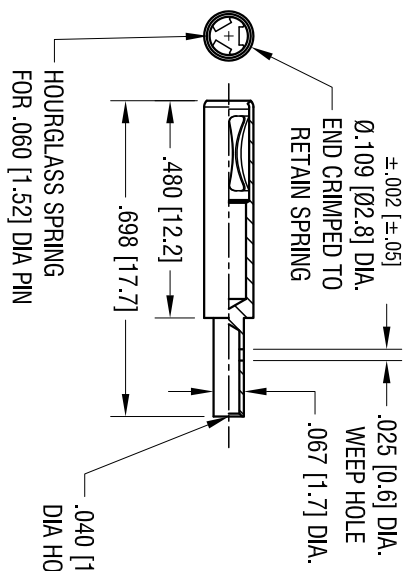


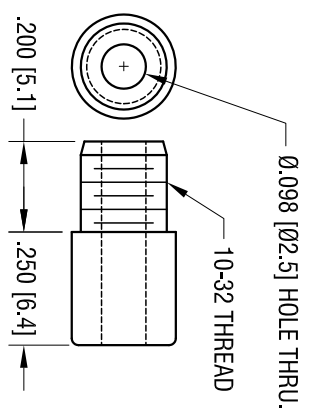
INSULATOR BASE



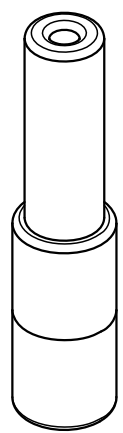
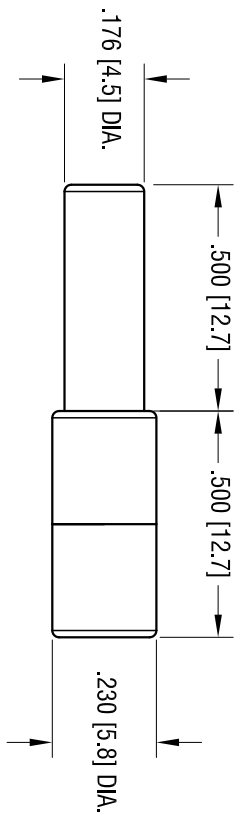
BODY



INSULATOR CAP



PART NUMBER	COLOR
9012	WHITE
9013	RED
9014	BLACK
9015	GREEN
9016	YELLOW
9017	BLUE



- NOTES:**
- INSULATOR - POLYCARBONATE
BODY - BRASS, GOLD PLATE
CONTACT - BERYLLIUM COPPER, GOLD PLATE
 - SUPPLIED UNASSEMBLED

THIS DOCUMENT IS THE PROPERTY OF KEYSTONE ELECTRONICS CORP. AND SHALL NOT BE REPRODUCED, DISTRIBUTED OR USED IN ANY MANNER WITHOUT PRIOR WRITTEN PERMISSION FROM KEYSTONE ELECTRONICS CORP.

KEYSTONE ELECTRONICS CORP.
www.keystelco.com • ASTORIA, N.Y. 11105-2017 • Tel (718) 956-8900

PART NAME: SHROUDED SPRING CONTACT

MATERIAL: AS NOTED

FINISH: AS NOTED

TOLEBRANGES: INCH [MM] DECIMAL ± .005 [± 0.15] ANGULAR ± 1°

CODE: C/M

DRN BY: HAMILTON

APPD: SCALE: 3X

DATE: 28MAY09

DWG NO.: 9012-9017