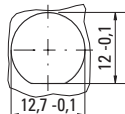


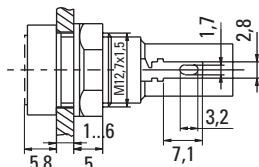
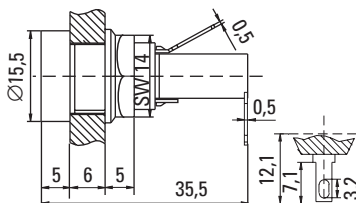
## Holder / No. 601

Not for new designs - refer to No. 850 and 851

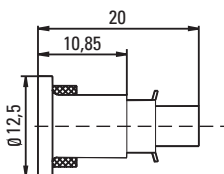


Panel opening

## Panel Mount, Shocksafe 5x20mm Fuses



## Cap / No. 602

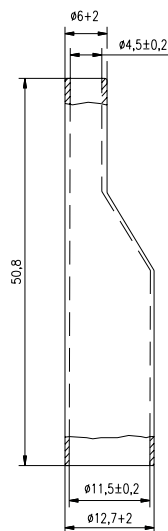


**Design 00:** without silicon washer (IP 40)

**Design 04:** with silicon washer (IP 54)  
(from front side only)

## Insulating cover for terminals/ No. 522

RoHS



## Specifications

### Standard

IEC 60127-6  
UL 512  
CSA C22.2. No.39

### Approvals

SEMKO: Certificate No. 9946019  
UL Recognized: File No. E 70164  
CSA Certified: File No. 47574  
VDE Licence No. 132224



### Mounting

12.7mm diameter D-hole  
Admissible torque on plastic hex nut is 1.2Nm

### Terminals

Solderable or 2.8mm quick connect-fits 0.5mm tab

### Protection Class & Category

IP 40 (with Cap 602 00 acc. to IEC 60529)  
IP 54 (with Cap 602 04 acc. to IEC 60529)  
PC2 (IEC 60127-6)

### Materials

Holder: Black Duroplast  
Phenoplast PF, UL94 V-0  
Cap: Black Thermoplastic  
Polyamide PA6.6, UL94 V-0  
Sealing Washer: Novapress Multi (Cap 602 04)  
Metal Parts: Copper alloy,  
corrosion protected  
Terminals: Solderable, tinned  
Insulating cover: Polyvinyl chloride (Soft PVC),  
black

### Electrical Data (23°C)

Rated Voltage: 250V  
Rated Current: 6.3A (SEMKO/VDE)  
16A (UL/CSA)  
Rated Power : 4W (SEMKO/VDE)

### Operating Temperature

-25°C to +70°C (consider de-rating)

### Climatic Test

-25°C/+70°C/21 days (IEC 60068-2-1...3)

### Stock Conditions

+10°C to +60°C  
relative humidity ≤ 75% yearly average,  
without dew, maximum value for 30 days - 95%

### Vibration Resistance

24 cycles at 15 min. each (IEC 60068-2-6)  
10 - 60Hz at 0.75mm amplitude  
60 - 2000Hz at 10g acceleration

### Dielectric Strength

> 1.5 kV

### Impulse Voltage

4 kV, 50 Hz, 1 min., dry

### Insulation Resistance

> 10<sup>3</sup> MΩ (500 VDC, 1 min.)

### Solderability

235°C, 3 sec. (Wave)  
350°C, 1 sec. (Soldering Iron)

### Soldering Heat Resistance

260°C, 5 sec. (IEC 60068-2-20)

### Minimum Cross Section

Conductor - 2.5mm<sup>2</sup>

### Marking

601, 250V, Approvals

### Unit Weight

4.0g (Holder) / 1.9g (Cap) / 2.9g (Insulating  
sleeve)

## Order Information

### Packaging

Bulk (100 pcs.)

### Order Numbers

Holder	No. 601 0000 000
Cap, without washer, IP 40	No. 602 0000 000
Cap, with washer, IP 64	No. 602 0000 040

Specifications are subject  
to change without notice

Note: 1.00 means the number one with two decimal places. 1,000 means the number one thousand.