

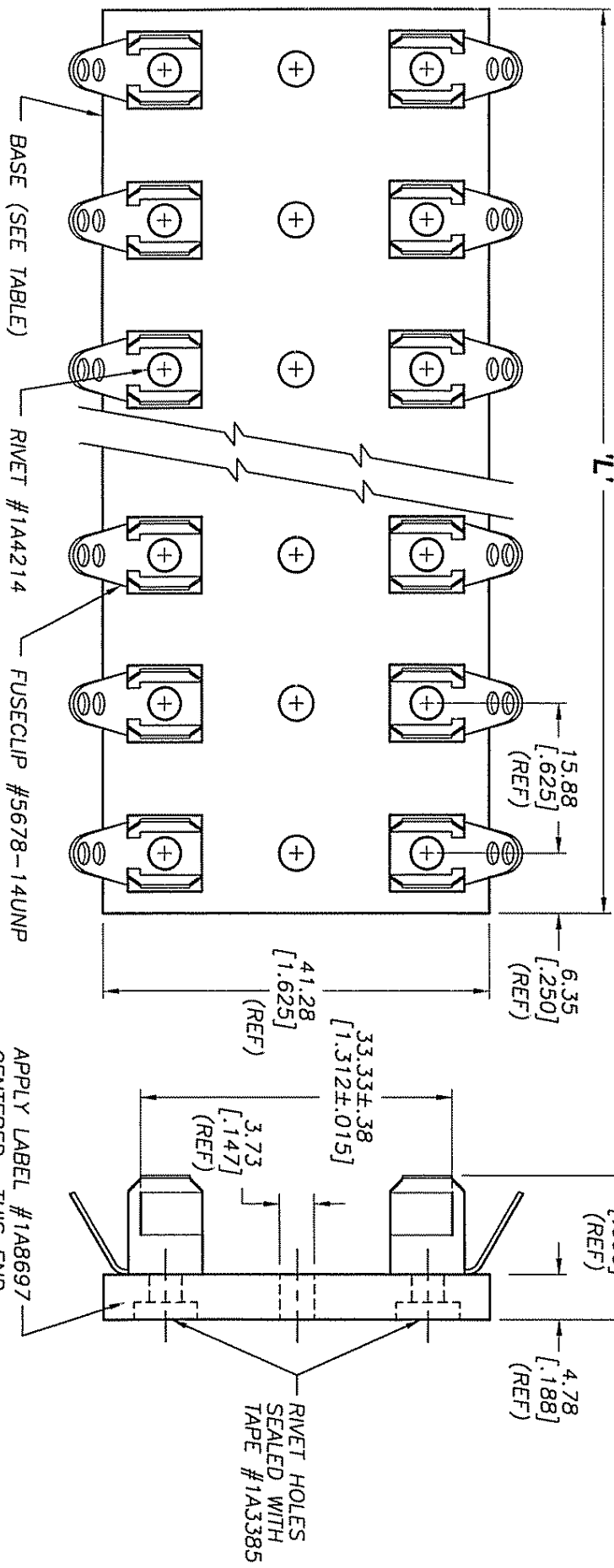
TITLE **FUSEBLOCK** DATE **3-4-04** NO. **3823** REV. **K**

DWG. CK. **COOPER Bussmann** SUP. NO. **3823** J DATED **5-22-99**

Ⓚ REVISED & REDRAWN

LETTERS IN CIRCLE INDICATE CHANGE FROM PRECEDING PRINT
PAGE 1 OF 2 J04084

56	J	SCALE	UNLESS OTHERWISE SPECIFIED
		1 1/2 X	TOLERANCES TO BE:
			METRIC ±.13mm
			INCHES ±.005"
			ANGULAR ±.2°
		INDICATES CRITICAL DIMENSION OR FEATURE	
		THIRD ANGLE PROJECTION	
			C/F. NO. 56476



PACKAGING SPECIFICATION #1P1063

PART NO.	NO. OF POLES	BASE P/N	'L' LENGTH (REF)
3823-1	1	6623-1	12.70 [500]
3823-2	2	6623-2	28.58 [1.125]
3823-3	3	6623-3	44.45 [1.750]
3823-4	4	6623-4	60.33 [2.375]
3823-5	5	6623-5	76.20 [3.000]
3823-6	6	6623-6	92.08 [3.625]

PART NO.	NO. OF POLES	BASE P/N	'L' LENGTH (REF)
3823-7	7	6623-7	107.95 [4.250]
3823-8	8	6623-8	123.83 [4.875]
3823-9	9	6623-9	139.70 [5.500]
3823-10	10	6623-10	155.58 [6.125]
3823-12	12	6623-12	187.33 [7.375]