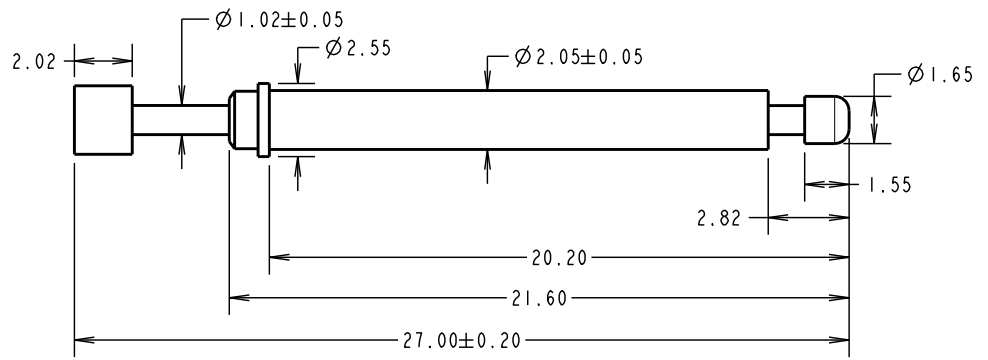


# Customer Information Sheet

DRAWING No.: P1113XX3 SHEET 2 OF 2 IF IN DOUBT - ASK (C) NOT TO SCALE THIRD ANGLE PROJECTION ALL DIMENSIONS IN mm

**SPECIFICATIONS:**  
**MATERIAL:**  
 PLUNGER = P1113CA3, P1113CV3 = BRASS  
 P1113SS3 = HIGH CARBON STEEL  
 BARREL = BRASS  
 SPRING = SPRING STEEL  
**FINISH:**  
 PLUNGER - P1113CA3/CV3 = 0.25µ MIN GOLD  
 P1113SS3 = 2.00µ MIN NICKEL  
**ELECTRICAL:**  
 CURRENT RATING = 2A MAX  
 CONTACT RESISTANCE = 50mΩ MAX  
**MECHANICAL:**  
 DURABILITY = 1,000,000 CYCLES  
 FULL TRAVEL = 3.18mm  
 SPRING FORCE:  
 FULL TRAVEL = 0.75 ± 0.25N  
 2.20mm TRAVEL = 0.54 ± 0.15N  
**ENVIRONMENTAL:**  
 TEMPERATURE RANGE = -40°C TO +85°C



**NOTES:**  
 1. RECOMMENDED HOLE SIZE = Ø2.00mm.  
 2. SUITABLE FOR A MINIMUM DISTANCE BETWEEN CENTRES OF 3.00mm.  
 3. THIS PART IS SIMILAR TO P1113XX2 APART FROM POWER RATING THAT WAS 5A MAX AND MATERIAL/ FINISH OF SPRING AND PLUNGER VARIANT P1113SS3.

## PROBE HEAD VARIANTS

 Ø 2.39±0.05 R3.05 <b>CONCAVE RADIUS HEAD</b> <b>P1113CA3</b>	 Ø 2.34±0.05 65° <b>CONVEX HEAD</b> <b>P1113SS3</b>	 Ø 2.39±0.05 R3.05 <b>CONVEX RADIUS HEAD</b> <b>P1113CV3</b>
---	---	--

ORDER CODE:  
**P1113XX3**  
 PROBE HEAD VARIANT (SEE BELOW)

SM	3	16.03.11	11173
NAME	ISS.	DATE	C/NOTE
APPROVED: S. MCCULLAGH			
CHECKED: R. ADDE			
DRAWN: M. G. PLESTED			
CUSTOMER REF.:			
ASSEMBLY DRG:			

<b>HARWIN</b>			THIS DRAWING AND ANY INFORMATION OR DESCRIPTIVE MATTER SET OUT HEREON ARE CONFIDENTIAL AND COPYRIGHT PROPERTY OF THE HARWIN GROUP AND MUST NOT BE DISCLOSED, LOANED, COPIED OR USED FOR MANUFACTURING, TENDERING OR FOR ANY OTHER PURPOSE WITHOUT THEIR WRITTEN PERMISSION.	TOLERANCES X. = ±1mm X.X = ±0.25mm X.XX = ±0.10mm X.XXX = ±0.01mm ANGLES = ±5° UNLESS STATED	MATERIAL: SEE ABOVE	TITLE: 3.00mm MIN. CENTRE ONE-PIECE SPRING PROBE
HARWIN USA TEL: 603 893 5376 FAX: 603 893 5396 mis@harwin.com	HARWIN Europe (UK) TEL: 023 9231 4545 FAX: 023 9231 4590 mis@harwin.co.uk	HARWIN Asia TEL: +65 6 779 4909 FAX: +65 6 779 3868 mis@harwin.com.sg		FINISH: SEE ABOVE S/AREA: mm²	DRAWING NUMBER: <b>P1113XX3</b>	SHT 2 OF 2