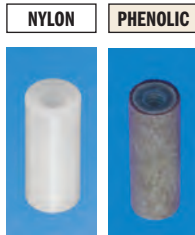
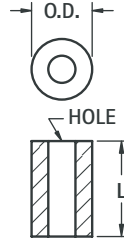
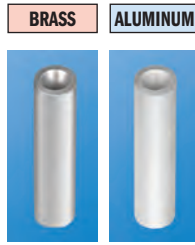


ROUND CLEAR HOLE SPACERS

| CLEAR HOLE | O.D. | L LENGTH | BRASS CAT. NO. | ALUMINUM CAT. NO. |
|-----------------------|------------|--------------|----------------|-------------------|
| .120 (3.0) For #4 | .250 (6.4) | .125 (3.2) | 1909 | 2036 |
| | | .250 (6.4) | 1454A | 3457 |
| | | .375 (9.5) | 1454B | 3458 |
| | | .500 (12.7) | 1454C | 3459 |
| | | .625 (15.9) | 1919 | 2314 |
| | | .750 (19.1) | 1454D | 3460 |
| | | .875 (22.2) | 1920 | 3402 |
| | | 1.000 (25.4) | 1454E | 3461 |
| | | 1.500 (38.1) | 1924 | 3462 |
| | | 2.000 (50.8) | 1925 | 3463 |
| .140 (3.5) For #6 | .250 (6.4) | .125 (3.2) | 1934 | 3403 |
| | | .250 (6.4) | 1457A | 3464 |
| | | .375 (9.5) | 1457B | 3465 |
| | | .500 (12.7) | 1457C | 3466 |
| | | .625 (15.9) | 1935 | 3429 |
| | | .750 (19.1) | 1457D | 3467 |
| | | .875 (22.2) | 1936 | 3438 |
| | | 1.000 (25.4) | 1457E | 3468 |
| | | 1.500 (38.1) | 1937 | 3469 |
| | | 2.000 (50.8) | 1938 | 3470 |
| .171 (4.3) For #8 | .250 (6.4) | .125 (3.2) | 1942 | 4258 |
| | | .250 (6.4) | 1480 | 3471 |
| | | .375 (9.5) | 1481 | 3472 |
| | | .500 (12.7) | 1482 | 3473 |
| | | .625 (15.9) | 2032 | 4259 |
| | | .750 (19.1) | 1483 | 3474 |
| | | .875 (22.2) | 2033 | 4260 |
| | | 1.000 (25.4) | 1484 | 3475 |
| | | 1.500 (38.1) | 2034 | 3476 |
| | | 2.000 (50.8) | 2035 | 3477 |
| .196 (5.0) For #10 | .312 (7.9) | .250 (6.4) | 1662 | 4261 |
| | | .375 (9.5) | 1663 | 4262 |
| | | .500 (12.7) | 1664 | 4263 |
| | | .625 (15.9) | 1665 | 4264 |
| | | .750 (19.1) | 1666 | 4265 |
| | | .875 (22.2) | 1667 | 4266 |
| | | 1.000 (25.4) | 1668 | 4267 |
| | | 1.500 (38.1) | 1669 | 4268 |
| | | 2.000 (50.8) | 1672 | 4269 |

MATERIAL:
 Brass: ASTM-B16, Nickel Plate (QQ-N-290)
 Aluminum: ASTM B211, Clear Iridite (MIL-C-5541)
 Nylon: Nylon 6/6, UL Rated 94V-2
 Phenolic: PBE Grade Natural Color Phenolic



| NYLON CAT. NO. | PHENOLIC CAT. NO. | L LENGTH | O.D. | CLEAR HOLE |
|----------------|-------------------|--------------|------------|-----------------------|
| 875 | — | .125 (3.2) | .250 (6.4) | .120 (3.0) For #4 |
| 876 | 360 | .250 (6.4) | | |
| 877 | 361 | .375 (9.5) | | |
| 878 | 362 | .500 (12.7) | | |
| 879 | — | .625 (15.9) | | |
| 880 | 363 | .750 (19.1) | | |
| 881 | — | .875 (22.2) | | |
| 882 | 364 | 1.000 (25.4) | | |
| 779 | 365 | 1.500 (38.1) | | |
| — | 366 | 2.000 (50.8) | | |
| 883 | — | .125 (3.2) | .250 (6.4) | .140 (3.5) For #6 |
| 884 | 367 | .250 (6.4) | | |
| 885 | 368 | .375 (9.5) | | |
| 886 | 369 | .500 (12.7) | | |
| 887 | — | .625 (15.9) | | |
| 888 | 370 | .750 (19.1) | | |
| 889 | — | .875 (22.2) | | |
| 890 | 371 | 1.000 (25.4) | | |
| 789 | 372 | 1.500 (38.1) | | |
| — | 373 | 2.000 (50.8) | | |
| 891 | — | .125 (3.2) | .250 (6.4) | .171 (4.3) For #8 |
| 892 | 1490 | .250 (6.4) | | |
| 893 | 1491 | .375 (9.5) | | |
| 894 | 1492 | .500 (12.7) | | |
| 895 | — | .625 (15.9) | | |
| 896 | 1493 | .750 (19.1) | | |
| 897 | — | .875 (22.2) | | |
| 898 | 1494 | 1.000 (25.4) | | |
| 799 | 374 | 1.500 (38.1) | | |
| — | 375 | 2.000 (50.8) | | |
| 790 | 453 | .250 (6.4) | .312 (7.9) | .196 (5.0) For #10 |
| 791 | 454 | .375 (9.5) | | |
| 792 | 455 | .500 (12.7) | | |
| 793 | — | .625 (15.9) | | |
| 794 | 456 | .750 (19.1) | | |
| 795 | — | .875 (22.2) | | |
| 796 | 457 | 1.000 (25.4) | | |
| 797 | 458 | 1.500 (38.1) | | |
| — | 459 | 2.000 (50.8) | | |

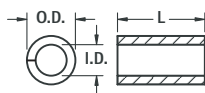
ALUMINUM ECONOMY SPACERS

- Made of flat strip aluminum and rolled on precision equipment.
- Assures maximum bearing surface, square ends.

Aluminum:
5052-H34 per QQ-A-250/8b



Tight Joint on Outside Diameter



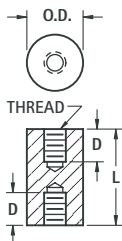
| SPACER FOR | I.D. | O.D. REF. |
|------------|------------|------------|
| # 4 | .120 (3.0) | .167 (4.3) |
| # 6 | .148 (3.8) | .193 (4.9) |
| # 8 | .176 (4.5) | .232 (5.9) |

| L LENGTH | SCREW CLEARANCE | | |
|-------------|-----------------|--------------|--------------|
| | # 4 CAT. NO. | # 6 CAT. NO. | # 8 CAT. NO. |
| .187 (4.7) | 397 | — | — |
| .250 (6.4) | 398 | 405 | 412 |
| .312 (7.9) | 399 | 406 | 413 |
| .375 (9.5) | 400 | 407 | 414 |
| .437 (11.1) | 401 | 408 | 415 |
| .500 (12.7) | 402 | 409 | 416 |
| .625 (15.9) | 403 | 410 | 417 |

| L LENGTH | SCREW CLEARANCE | | |
|--------------|-----------------|--------------|--------------|
| | # 4 CAT. NO. | # 6 CAT. NO. | # 8 CAT. NO. |
| .750 (19.1) | 418 | 425 | 432 |
| .875 (22.2) | 419 | 426 | 433 |
| 1.000 (25.4) | 420 | 427 | 434 |
| 1.250 (31.8) | 421 | 428 | 435 |
| 1.500 (38.1) | 422 | 429 | 436 |
| 1.750 (44.5) | — | 430 | 437 |
| 2.000 (50.8) | — | — | 438 |

CERAMIC STANDOFFS

- Ideal for very high temperature conditions
- Commercial and military types available
- Military types meet MIL-1-010, NL # clearly marked
- Exceptional strength in compression and tension
- Withstands very high voltage without flashover
- Special sizes available upon request



MATERIAL: Grade L5 Ceramic

| CAT. NO. | L LENGTH | O.D. | COMMERCIAL | |
|----------|---------------|-------------|------------|-------------|
| | | | T THREAD | D DEPTH |
| 7710 | 250 (6.4) | 250 (6.4) | 6-32 | THRU |
| 7711 | .500 (12.7) | .250 (6.4) | 6-32 | .156 (4.0) |
| 7712 | .375 (9.5) | .375 (9.5) | 6-32 | .156 (4.0) |
| 7713 | .500 (12.7) | .375 (9.5) | 6-32 | .156 (4.0) |
| 7714 | .500 (12.7) | .500 (12.7) | 6-32 | .140 (3.6) |
| 7715 | .750 (19.1) | .500 (12.7) | 6-32 | .250 (6.4) |
| 7716 | 1.000 (25.4) | .500 (12.7) | 6-32 | .375 (9.5) |
| 7717 | 1.500 (38.1) | .500 (12.7) | 6-32 | .562 (14.3) |
| 7718 | 2.500 (63.5) | .500 (12.7) | 6-32 | .500 (12.7) |
| 7719 | 2.500 (63.5) | .750 (19.1) | 1/4 - 20 | .750 (19.1) |
| 7720 | 4.000 (101.6) | .750 (19.1) | 1/4 - 20 | .750 (19.1) |

MILITARY

| CAT. NO. | L LENGTH | O.D. | T THREAD | D DEPTH | NL # |
|----------|--------------|--------------|----------|-------------|--------------|
| 7661 | .500 (12.7) | .375 (9.5) | 6-32 | .156 (4.0) | NL523W01-004 |
| 7662 | .625 (15.9) | .375 (9.5) | 6-32 | .250 (6.4) | NL523W01-005 |
| 7663 | .625 (15.9) | .500 (12.7) | 8-32 | .187 (4.7) | NL523W02-005 |
| 7664 | .750 (19.1) | .375 (9.5) | 6-32 | .250 (6.4) | NL523W01-006 |
| 7665 | .750 (19.1) | .500 (12.7) | 8-32 | .250 (6.4) | NL523W02-006 |
| 7666 | 1.000 (25.4) | .375 (9.5) | 6-32 | .375 (9.5) | NL523W01-008 |
| 7667 | 1.000 (25.4) | .500 (12.7) | 8-32 | .375 (9.5) | NL523W02-008 |
| 7668 | 1.000 (25.4) | .750 (19.1) | 10-32 | .375 (9.5) | NL523W03-008 |
| 7669 | 1.250 (31.8) | .375 (9.5) | 6-32 | .375 (9.5) | NL523W01-010 |
| 7670 | 1.250 (31.8) | .500 (12.7) | 8-32 | .375 (9.5) | NL523W02-010 |
| 7671 | 1.250 (31.8) | 1.000 (25.4) | 1/4 - 20 | .437 (11.1) | NL523W04-010 |
| 7672 | 1.500 (38.1) | .375 (9.5) | 6-32 | .375 (9.5) | NL523W01-012 |
| 7673 | 1.500 (38.1) | .500 (12.7) | 8-32 | .375 (9.5) | NL523W02-012 |
| 7674 | 1.500 (38.1) | .750 (19.1) | 10-32 | .375 (9.5) | NL523W03-012 |
| 7675 | 1.500 (38.1) | 1.000 (25.4) | 1/4 - 20 | .500 (12.7) | NL523W04-012 |
| 7676 | 2.000 (50.8) | .375 (9.5) | 6-32 | .375 (9.5) | NL523W01-016 |
| 7677 | 2.000 (50.8) | .500 (12.7) | 8-32 | .375 (9.5) | NL523W02-016 |
| 7678 | 2.000 (50.8) | .750 (19.1) | 10-32 | .375 (9.5) | NL523W03-016 |