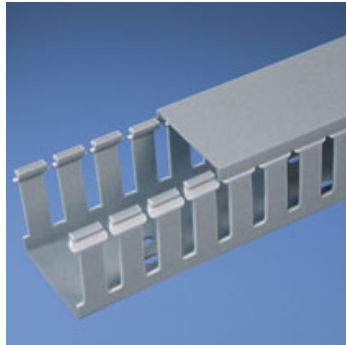




G3X3LG6-A

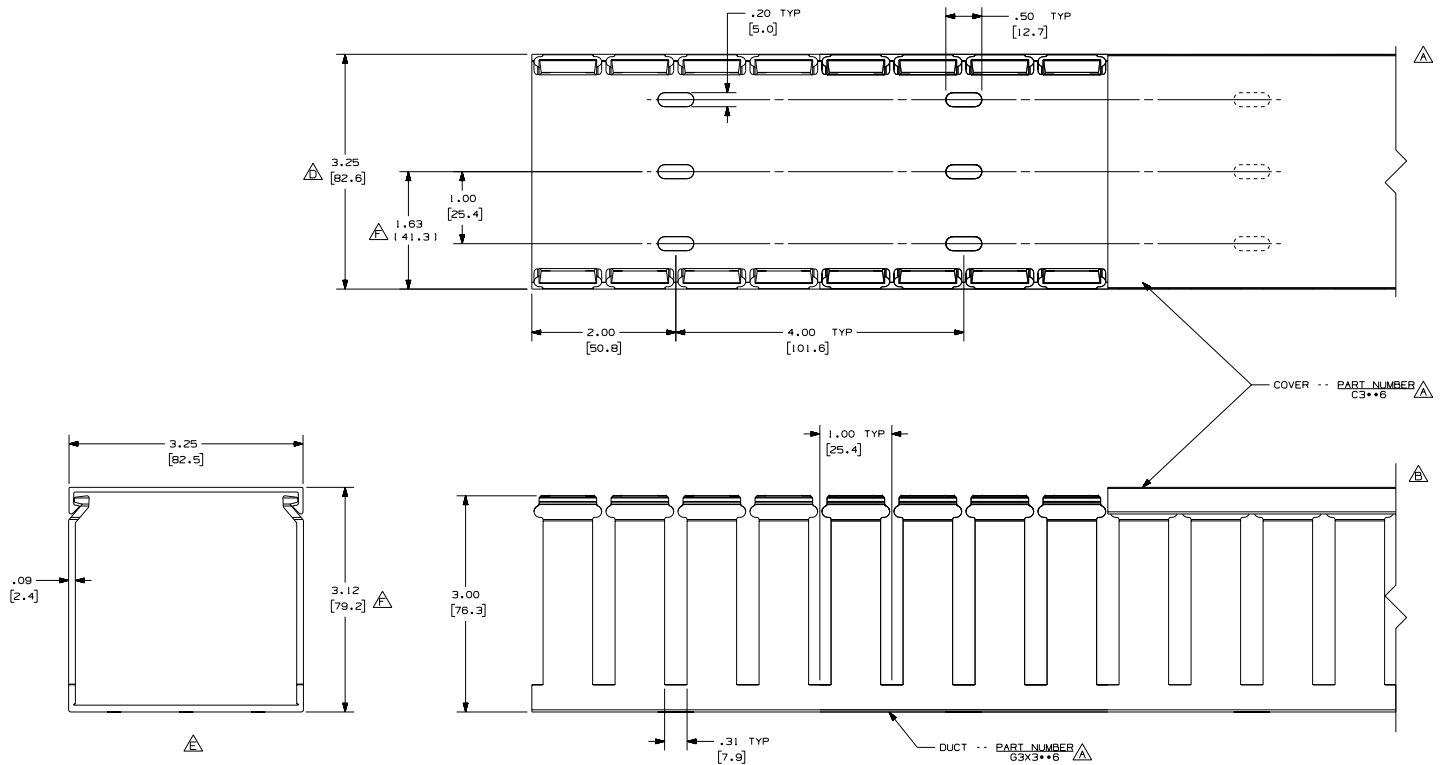


- Choose from 36 sizes of *PANDUIT*® Type G Wiring Duct from 0.5 "x 0.5" up to 6.0" x 4.0" in popular colors. Used for general purpose control panel wiring and to route and protect wiring in communication closets. The non-slip cover conceals all wiring and is easy to install. The duct and cover form a flush sidewall providing increased capacity and improved aesthetics.
- **Specifications**
 - Made of lead-free PVC
 - UL Recognized continuous use temperature: 122 °F (50°C)
 - UL94 Flammability Rating of V-0
 - Conforms with NFPA 79-2002 section 14.3.1 requirement for flame retardant material
 - Provided with mounting holes
- **Features and Benefits**
 - Wide finger/slot design provides greater sidewall rigidity and can be used with a wide range of wire bundle sizes
 - *PANDUIT*® exclusive rounded edges protects hands and wiring/cabling from abrasion
 - Non-slip cover stays in place during shipment, vibration and when in vertical orientation, eliminating rework
 - Flush cover design holds 10-12% more wires than traditional duct designs
 - Double scoreline allows quick modification for larger cabling bundles saving installation time leading to a lower installed cost
 - Specially formulated lead-free material eliminates health concerns associated with PVC that contains lead
 - Restricted slot design retains wire in slot for fast, easy wire installation or removal
- Base and cover sold separately.

• Part Number	G3X3LG6-A
• RoHS Compliancy Status	Compliant
• Part Description	Wide finger, slotted wiring duct.
• Material	Lead-Free PVC
• Color	Light Gray
• CSA Certified	Yes
• UL Recognized (File No. E147128)	Yes
• Length (ft.)	6
• Adhesive Mounting Tape	Yes
• CE Marking	Yes
• Duct Size W x H (In.)	3.25 x 3.12
• Duct Size W x H (mm)	82.6 x 79.2
• Mounting Method	Standard Mounting Holes with Adhesive
• Pricing Description	Slotted Duct, PVC,3"X3"X6',ADH,LGRY
• Slot Width (In.)	.31

▪ Slot Width (mm)	7.9
▪ Cover Part Number	C3LG6
▪ Min. Order UOM	FT
▪ Min. Order Qty.	6
▪ BOM Qty. (# of Pkgs.)	

THIS COPY IS PROVIDED ON A RESTRICTED BASIS AND IS NOT TO BE USED IN ANY WAY DETRIMENTAL TO THE INTERESTS OF PANDUIT CORP.



NOTES:

1. ALL DIMENSIONS ARE REFERENCE ONLY.
2. DIMENSIONS IN PARENTHESIS ARE METRIC.
3. THE ** DENOTE COLOR.
4. DUCT AND COVER ARE AVAILABLE IN 6 FT (1828.8) LENGTHS.

REV	DATE	BY	CHK	DESCRIPTION	DESIGNED BY	MATERIAL	SCALE	DRAWING NO.	DATE	SIZE
1	5-20-04	JCST	MKB	A. CHANGED VIEW B. CHANGED VIEW C. CHANGED DRAWING SIZE	JCST	PVC	FULL	36897-711	3-5-03	C
2	7-6-07	JCST	MKB	D. ADDED DIMENSION E. DELETED DIMENSION F. CORRECTED DIMENSION G. ADDED LENGTH NOTE H. ADDED TOP VIEW, NOTES, AND LABELS	JCST	PVC	FULL	36897-711	3-5-03	C
R	3-5-03	JCST	JGG	DRAWING RELEASED	JGG	PVC	FULL	36897-711	3-5-03	C

FILE NAME: D110000Y_DC_00C

PANDUIT CORP., TINLEY PARK, ILLINOIS

WIRING DUCT - TYPE G DUCT WITH COVER
3X3

MARKETING DRAWING