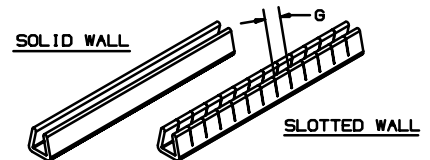
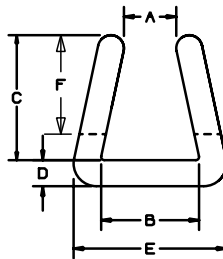
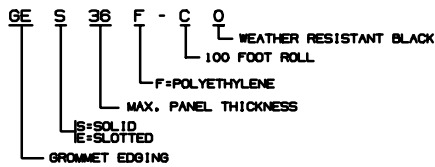


THIS COPY IS PROVIDED ON A RESTRICTED BASIS AND IS NOT TO BE USED IN ANY WAY DETRIMENTAL TO THE INTERESTS OF PANDUIT CORP.

PANDUIT PART NO. **	PANEL THICKNESS	A	B	C	D	E REF.	F * REF.	G * REF.
GE_36F-C	TO 0.036 (0.91)	0.025 (0.64)	0.045 (1.14)	0.087 (2.21)	0.030 (0.76)	0.106 (2.69)	.080	0.150 (3.81)
GE_62F-C	0.036 - 0.062 (0.91) - (1.57)	0.035 (0.89)	0.070 (1.78)	0.130 (3.30)	0.030 (0.76)	0.131 (3.33)	.105	0.150 (3.81)
GE_99F-C	0.062 - 0.099 (1.57) - (2.51)	0.054 (1.37)	0.108 (2.74)	0.155 (3.94)	0.030 (0.76)	0.169 (4.29)	.125	0.150 (3.81)
GE_144F-C	0.099 - 0.144 (2.51) - (3.68)	0.090 (2.29)	0.152 (3.86)	0.192 (4.88)	0.030 (0.76)	0.213 (5.41)	.160	0.150 (3.81)
GE_189F-C	0.144 - 0.189 (3.68) - (4.80)	0.12 (3.2)	0.206 (5.23)	0.255 (6.48)	0.046 (1.17)	0.297 (7.55)	---	---

NOTES:

- * 1) DIM'S F & G APPLY ONLY TO SLOTTED GROMMET EDGING.
- ** 2) PART NO. EXAMPLE:



- 3) SEE CURRENT PRICE SHEET FOR PART NO. SUFFIX DESIGNATION FOR PACKAGE SIZE.
- 4) COLOR: a) NATURAL
b) -0 AFTER PART NO. DENOTES WEATHER RESISTANT BLACK
- 5) SLOTTED WALL STYLE IS RECOMMENDED FOR INSIDE EDGE OF PANEL CUT OUTS.
SOLID WALL STYLE IS RECOMMENDED FOR STRAIGHT, OUTSIDE EDGES.

(DIMENSIONS IN PARENTHESES ARE IN METRIC.)

DWG FILENAME/LAYER

G00239FU_DC_03A.PRT

PANDUIT

CORP. TINLEY PARK, ILLINOIS

CONTINUOUS ROLL GROMMET EDGING

REV	DATE	BY	CHK	DESCRIPTION	ECN	R	CUST	SUP	DATE	DRW'G	MAT'L'S	SCALE	DWG NO.	DWG SIZE
3	2/4/03	LG6		UPDATED DIM 'A' ON GE_189F-C WAS 0.125 (3.18)	G80239FU	2								
2	6/12/02	LG6		UPDATED DIM 'F' AS REFERENCE	G80239FU	2								
1	4/10/02	LG6		CHG 'G' DIM TO REF	G80239FU	1								
R	8-5-98	CPE		ADDED NOTE #5, UPDATED FILE NAME	G80239FU	R			5-24-85	SEE NOTE #2			G80239FU	A

UNLESS OTHERWISE SPECIFIED, DIMENSIONAL TOLERANCES ARE:
 (.X) ±0.1(2.5) (.XXX) ±0.020(.5)
 (.XX) ±0.05(1.3) ANGLES ±5°

UNLESS OTHERWISE SPECIFIED, ALL DIMENSIONS ARE GIVEN IN INCHES, THIRD ANGLE PROJECTION.

DRAWN BY

CEW

MAT'L'S

SEE NOTE #2

SCALE

NONE

DRAWING NO.

G80239FU

DWG

A

SIZE