



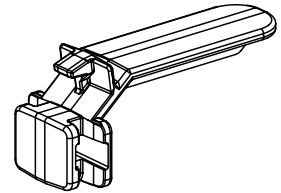
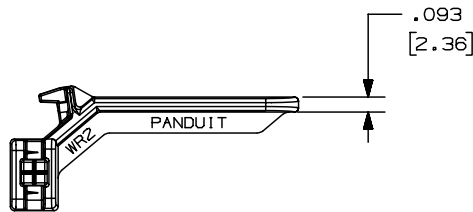
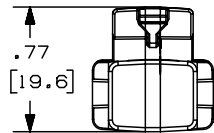
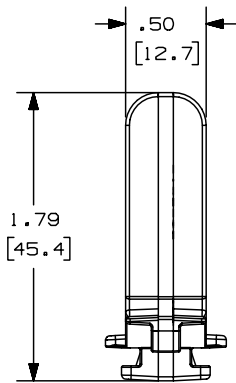
WR2-C



- Insert between fingers of type G wiring duct to contain wiring when cover is removed
- Adjustable height

| | |
|--|--|
| ▪ Part Number | WR2-C |
| ▪ RoHS Compliancy Status | Compliant |
| ▪ Part Description | Wire retainer for use with Type G Wiring Duct. |
| ▪ Material | ABS |
| ▪ For Duct Height Inches (mm) | 2.00 – 4.00 (50.8 – 101.6) |
| ▪ For Duct Size Width and Height (In.) | 2.0x4.0 or Under |
| ▪ For Duct Size Width and Height (mm) | 50.8x101.6 or Under |
| ▪ For Duct Width Inches (mm) | 2.00 (50.8) |
| ▪ Pricing Description | Duct Wire Retainer, Type E & G, 2" |
| ▪ Min. Order UOM | PC |
| ▪ Min. Order Qty. | 100 |
| ▪ BOM Qty. (# of Pkgs.) | |

THIS COPY IS PROVIDED ON A RESTRICTED BASIS AND IS NOT TO BE USED IN ANY WAY DETRIMENTAL TO THE INTERESTS OF PANDUIT CORP.



| PANDUIT P/N | WEIGHT |
|-------------|-------------------------------------|
| WR2 | .506 LB/ 100PCS. (230g/ 100PCS.) |



NOTES:

1. SEE CURRENT CATALOG FOR ADDITIONAL PART SUFFIXES TO INDICATE COLOR AND OR PACKAGE QUANTITY.
2. THIS WIRE RETAINER IS TO BE USED TO RETAIN WIRES IN "G" DUCT SIZES 2" X 1" THRU 2" X 4".
3. DIMENSIONS IN PARENTHESIS ARE METRIC.



CAD FILENAME/LAYERS D35541DH_DC_WR2_03C.PRT

PANDUIT CORP. TINLEY PARK, ILLINOIS
 WIRING DUCT AND CABLE MANAGEMENT
 WIRE RETAINER (WR2)
 FOR USE WITH TYPE "G" DUCT - CUSTOMER DRAWING

| REV | DATE | BY | CHK | DESCRIPTION | ECN | R | CUST | SUP | DRAWN BY | DATE | CHK'D | MAT'L: | SCALE | DRAWING NO. | DWG SIZE |
|-----|---------|------|-----|--------------------------------------|----------|---|------|-----|----------|---------|-------|--------|-------|-------------|----------|
| 2 | 3/9/04 | JCST | JKG | C. CHANGED NOTES B. CHANGED TITLE | 35541-60 | | HIW | HIW | RCA | 3-13-97 | CEF | ABS | NONE | 35541-60 | A |
| 1 | 8-29-00 | JHNU | HIW | A. REVISED AND REDRAWN. | 35541-60 | | HIW | HIW | | | | | | | |
| R | 3-13-97 | RCA | CEF | RELEASED TO PRODUCTION | 35541-60 | | CEF | CEF | | | | | | | |
| | | | | | | | | | | | | | | | |

UNLESS OTHERWISE SPECIFIED,
 DIMENSIONAL TOLERANCES ARE:
 (.X) ± (.XXX) ±
 (.XX) ±.03(.8) ANGLES ±

UNLESS OTHERWISE SPECIFIED,
 ALL DIMENSIONS ARE GIVEN
 IN INCHES, THIRD ANGLE PROJECTION.