



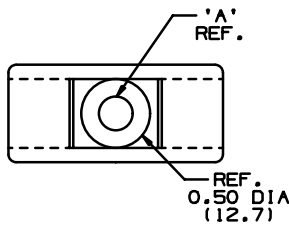
TMEH-S25-Q0



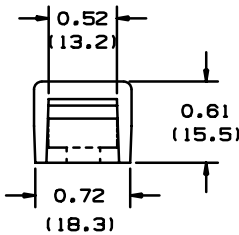
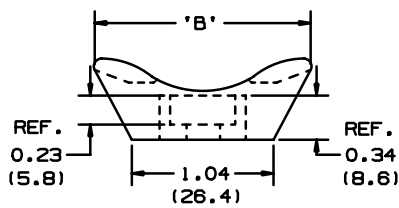
- Mounts designed specially for use with *PANDUIT* Extra-Heavy cross section ties for mounting cable, large wire bundles or tubular shapes.
- Unique cradle design provides maximum stability for cable bundle
- Route and support large diameter and heavy cable bundles
- ‡ Cable Tie Cross Section Sizes: M = Miniature, I = Intermediate, S = Standard, HS = Heavy-Standard, LH = Light-Heavy, H = Heavy, HLM = Miniature *Tak-Ty*® Hook & Loop Cable Ties.

• Part Number	TMEH-S25-Q0
• RoHS Compliancy Status	Compliant
• Part Description	Extra Heavy Cable Tie Mount
• Material	Weather Resistant Nylon 6.6
• Color	Black
• UL Recognized	E136577
• Height (In.)	.61
• Height (mm)	15.5
• Length (In.)	1.62
• Length (mm)	41.1
• Width (In.)	.72
• Width (mm)	18.3
• Environment	Outdoors
• Flammability Rating	UL94 V-2
• Hole Diameter (In.)	.26
• Hole Diameter (mm)	6.6
• Max. Bundle Diameter (mm)	12.7
• Mounting Method	1/4 (M6) Screw
• Pricing Description	Cable Tie Mount, Extra-Heavy, 1/4 Screw, Weather Resistant Nylon
• Screw Size	1/4 (M6)
• Screw Size Metric	M6
• Used With Cable Ties	I, S, H, EH
• Min. Order UOM	PC
• Min. Order Qty.	25
• BOM Qty. (# of Pkgs.)	

THIS COPY IS PROVIDED ON A RESTRICTED BASIS AND IS NOT TO BE USED IN ANY WAY DETRIMENTAL TO THE INTERESTS OF PANDUIT CORP.



PANDUIT PART NUMBER*	*MATERIAL SUFFIX	'A' DIA.	'B'	MTG. SCREW	WEIGHT lbs/100 pcs (g)/100 pcs	USE WITH ANY OF THESE CABLE TIES
TMEH-S8	-0	0.18 (4.6)	1.62 (41.1)	#8 (M4)	1.04 (471.4)	I,S,H,EH
TMEH-S10	-0	0.20 (5.1)	1.62 (41.1)	#10 (M5)	1.03 (467.4)	I,S,H,EH
	-100 -109		1.65 (41.9)			
TMEH-S25	-0	0.28 (6.6)	1.62 (41.1)	1/4" (M6)	1.01 (458.0)	I,S,H,EH



*MATERIAL SUFFIX	MATERIAL
-0	WEATHER RESISTANT NYLON
-100 -109	WEATHER RESISTANT POLYPROPYLENE

- NOTES:
 1. SEE CURRENT PRICE SHEET FOR PART NUMBER SUFFIX DESIGNATION FOR PACKAGE SIZE.
 2. CABLE TIE CROSS SECTION CODE:
 I=INTERMEDIATE,S=STANDARD
 H=HEAVY DUTY,EH=EXTRA HEAVY.

DIMENSIONS IN BRACKETS ARE METRIC [mm]

000 FILES/LAYERS G00239EL_PB_TMEH_02

PANDUIT CORP. TINLEY PARK, ILLINOIS

TMEH-XX
TIE MOUNT

REV	DATE	BY	CHK	DESCRIPTION	ECN	R	CUST	SUP	DATE	DRW'G	MAT'L'S	SCALE	DWG NO.	DWG SIZE
2	10/28/03	MSAC		ADDED SEPERATE TMEH-S10 ROW FOR -100 AND -109 PARTS. 0.50 (12.7) DIA WAS .52 (13.2), 'B' WAS 1.65 (41.9) FOR -0 PARTS, 0.72 (18.3) WAS .74 (18.8) 1.04 (26.4) WAS 1.05 (26.7)	G80239EL	2								
1	7/24/01	LGG		ADDED REF & UPDATED	G80239EL	1				12/13/98	SEE TABLE	NONE	G80239EL	A
R	12/13/98	AJV		INITIAL RELEASE	G80239EL	R								

UNLESS OTHERWISE SPECIFIED, DIMENSIONAL TOLERANCES ARE:
 (.X) ±0.05 (1.3) (.XX) ±0.010 (0.25)
 (.XX) ±0.02 (0.5) ANGLES ±5°

UNLESS OTHERWISE SPECIFIED, ALL DIMENSIONS ARE GIVEN IN INCHES, THIRD ANGLE PROJECTION.

DRAWN BY AJV

MAT'L'S

SCALE NONE

DATE

12/13/98

SEE TABLE

DWG NO.

G80239EL

DWG

A

SIZE