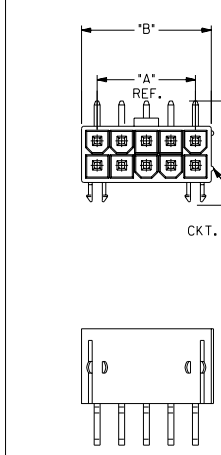
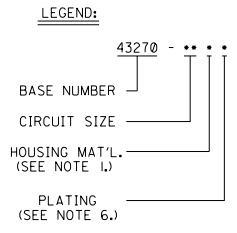
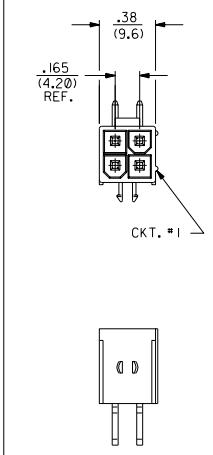


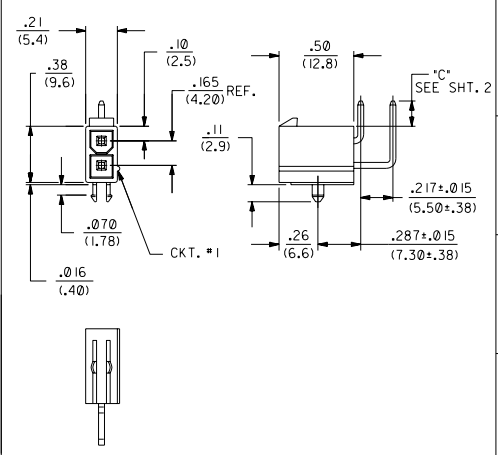
CIRCUIT SIZE	DIM. "A"	DIM. "B"
6	.33 (8.4)	.54 (13.8)
8	.50 (12.6)	.71 (18.0)
10	.66 (16.8)	.87 (22.2)
12	.83 (21.0)	1.04 (26.4)
14	.99 (25.2)	1.20 (30.6)
16	1.16 (29.4)	1.37 (34.8)
18	1.32 (33.6)	1.54 (39.0)
20	1.49 (37.8)	1.70 (43.2)
22	1.65 (42.0)	1.87 (47.4)
24	1.82 (46.2)	2.03 (51.6)



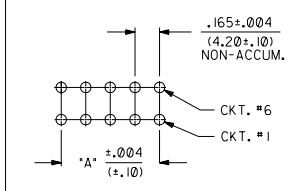
5569-•A2•••



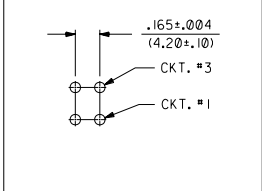
5569-04A2•••



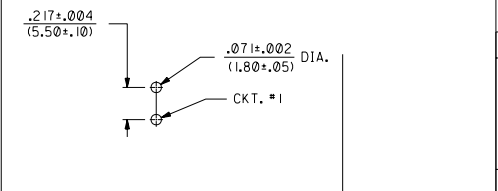
5569-02A2•••



RECOMMENDED HOLE LAYOUT FOR
.070/(1.78) MAX. THICK P.C. BOARD
(FROM UNDER-SIDE OF BOARD)
(SEE NOTE 4.)



RECOMMENDED HOLE LAYOUT FOR
.070/(1.78) MAX. THICK P.C. BOARD
(FROM UNDER-SIDE OF BOARD)
(SEE NOTE 4.)



RECOMMENDED HOLE LAYOUT FOR
.070/(1.78) MAX. THICK P.C. BOARD
(FROM UNDER-SIDE OF BOARD)
(SEE NOTE 4.)

- NOTES:**
- HOUSING MATERIAL:
 - NYLON 6/6, U.L. 94V-2, COLOR: BLACK (DYED).
 - NYLON 6/6, U.L. 94V-2, COLOR: NATURAL.
 - NYLON 6/6, U.L. 94V-0, COLOR: NATURAL.
 - TERMINAL MATERIAL: BRASS ALLOY 260.
 - PART MATES WITH MINI-FIT JR. RECEPTACLE #5557.
 - PART IS DESIGNED IN METRIC.
 - ITEM NO'S. PRECEDED BY AN "X" IN THE CHART ARE NOT AVAILABLE.
 - TERMINAL PLATING:
 - .000200/(.00508) MIN. TIN OVER .000100/(.00254) MIN. COPPER.
 - .000030/(.00076) MIN. GOLD OVER .000050/(.00127) MIN. NICKEL.
 - .000015/(.00038) MIN. GOLD OVER .000030/(.00076) MIN. NICKEL.
 - .000050/(.00127) MIN. GOLD OVER .000050/(.00127) MIN. NICKEL.
 - .000030/(.00076) MIN. SELECT GOLD AND .000100/(.00254) MIN. SELECT MATTE TIN OVER .000050/(.00127) MIN. NICKEL OVERALL.
 - .000015/(.00038) MIN. SELECT GOLD AND .000100/(.00254) MIN. SELECT MATTE TIN OVER .000050/(.00127) MIN. NICKEL OVERALL.
 - .000100/(.00254) MIN. TIN OVER .000050/(.00127) MIN. NICKEL.
 - THE PRIMARY SHIPPING CARTON WILL BE LABELED "COMPLIANT TO RoHS DIRECTIVE 2002/95/EC AND ELV ANNEX II OF DIRECTIVE 2000/53/EC". CARTONS WITHOUT THIS LABEL MAY CONTAIN PRODUCT WITH TIN-LEAD PLATING.
 - PRODUCT SPECIFICATIONS AND PROCESSING PARAMETERS: SEE PS-5556-001 EXCEPT FOR ITEM NO'S. 4-2-6 AND 4-2-7 UNDER MECHANICAL PERFORMANCE.

C	REV PLATING NOTE UCP2004-1849 3/24/2004 CZUMA
B	REV PS NOTE UCP2003-0356 9/5/2003 SAMEC
A2	REVISED UCR2001-0460 JHWANG 00-11-10
A1	ADDED "X" S PER ECN U30610 GEP 10-15-93
A	REMOVE "X" PER ECN U30600 GEP 6-4-93
2	"X" REL PER ECN U30677 GEP 5-4-93
A2	REV. LTR.
1	REV. LTR.
C	REV. LTR.
MFG.	SH.
REV.	LTR.
REVISE ONLY ON CAD SYSTEM	

MOLEX INCORPORATED SHEET NO. DATE
U.S.A. 1 OF 2 5/4/93

SEE CHART SDA-43270-•

NO DIMENSIONS CONTAINING INFORMATION THAT IS PROPRIETARY TO MOLEX INC. AND SHOULD NOT BE USED WITHOUT WRITTEN PERMISSION. CP

13					12					11					10					9					8					7					6					4					3					2					1				
ITEM NUMBER	CKT. SIZE	TERMINAL PLATING			HOUSING MATERIAL			DIM "C"			ITEM NUMBER	CKT. SIZE	TERMINAL PLATING			HOUSING MATERIAL			DIM "C"			43270																																					
43270-0211	2	200 TIN OVER 100 COPPER.			94V-2			.17 (4.3)			43270-0001	2	200 TIN OVER 100 COPPER.			94V-2			.12 (3.1)																																								
43270-0411	4										43270-0002	4																																															
43270-0611	6										43270-0003	6																																															
43270-0811	8										43270-0004	8																																															
43270-1011	10										43270-0005	10																																															
43270-1211	12										43270-0006	12																																															
43270-1411	14										43270-0007	14																																															
43270-1611	16										43270-0008	16																																															
X 43270-1811	18										X 43270-0009	18																																															
X 43270-2011	20										X 43270-0010	20																																															
X 43270-2211	22										X 43270-0011	22																																															
X 43270-2411	24	200 TIN OVER 100 COPPER.			94V-2			.17 (4.3)			X 43270-0012	24	200 TIN OVER 100 COPPER.			94V-2			.12 (3.1)																																								

DIMENSIONS SHOWN METRIC INCH		∇=0	▽=0	REVISE ONLY ON CAD SYSTEM
UNLESS OTHERWISE SPECIFIED TOLERANCES ANGULAR ± 1/2°				
INCH METRIC				
3 PLACE	± .001	± .025		
2 PLACE	± .005	± .050		
1 PLACE	± .015	± .150		
DRAFT WHERE APPLICABLE MUST REMAIN WITHIN DIMENSIONS				
DRWG. BY	GEP	CHK'D. BY	RJF	
APP'D. BY	RJF	SCALE	1:1	
LTR.	REVISIONS	LTR.	REVISIONS	

TITLE		PART NO.		DRWG. NO.	
MINI-FIT JR. RIGHT ANGLE HEADER ASS'Y. WITH MTG. PEGS, PINS ROTATED 180°		SEE CHART		SDA-43270-*	
MOLEX INCORPORATED		SHEET NO.		DATE	
1315EJALL		2		5/4/93	
U.S.A.		U.S.A.		U.S.A.	
THIS DRAWING CONTAINS INFORMATION THAT IS PROPRIETARY TO MOLEX INC. AND SHOULD NOT BE USED WITHOUT WRITTEN PERMISSION.		CP		C	