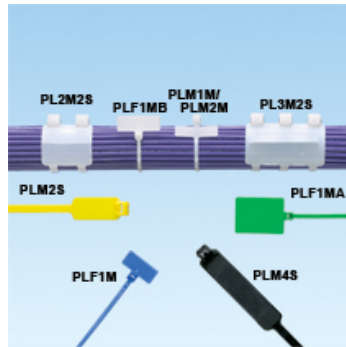




PLM1M-C

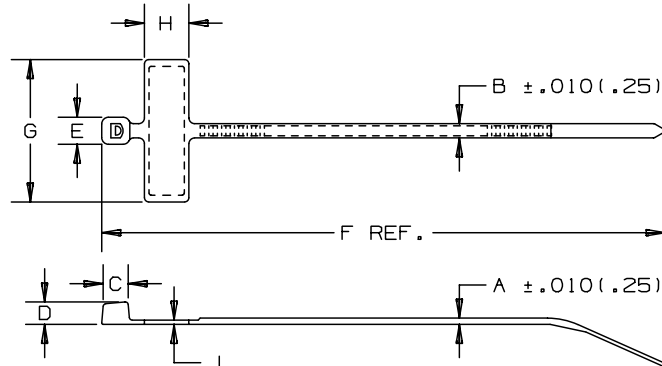


- For indoor use
- Used to fasten and identify bundles at the same time
- One-piece construction for consistent performance and reliability
- Can be marked with *PANDUIT* marker pens or custom imprinted with text, symbols, or trademarks available using *PANDUIT* Custom Hot Stamping Service
- Curved tip is easy to pick up from flat surfaces and allows faster initial threading to speed installation

• Part Number	PLM1M-C
• RoHS Compliancy Status	Compliant
• Part Description	Marker Tie, Wrap, 3.9", Miniature cross section
• Product Type	Cable Ties
• Material	Nylon 6.6
• Color	Natural
• CSA Certified	Yes
• Mil. Std. Part Number	MS3368-5-9E
• UL Listed (File #E56854)	No
• UL Recognized (File #E56854)	Yes
• Length (In.)	3.9
• Length (mm)	99
• Width (In.)	.098
• Width (mm)	2.5
• CE Compliant	Yes
• Cross Section	Miniature
• Head Height (In.)	.154
• Head Height (mm)	3.9
• Head Width (In.)	.180
• Head Width (mm)	4.6
• Locking Style	Locking
• Marker Type	Wrap
• Marker Write-On Area (In.)	.26 x .95
• Marker Write-On Area (mm)	6.6 x 24.1
• Material Flammability Rating	UL 94V-2
• Max. Bundle Diameter (In.)	.75

▪ Max. Bundle Diameter (mm)	19
▪ Max. Continuous Use Temperature	185°F (85°C)
▪ Min. Loop Tensile Strength (Lbs.)	18
▪ Min. Loop Tensile Strength (N)	80
▪ Pricing Description	Marker Tie, Wrap, 3.9"L (99mm), Miniature, Nylon, Natural
▪ Thickness (In.)	.035
▪ Thickness (mm)	.9
▪ Tool	GTS, GTSL, GS2B, PTS, PPTS, STS2
▪ Min. Order UOM	PC
▪ Min. Order Qty.	100

THIS COPY IS PROVIDED ON A RESTRICTED BASIS AND IS NOT TO BE USED IN ANY WAY DETRIMENTAL TO THE INTERESTS OF PANDUIT CORP.



PANDUIT * PART NO.	BUNDLE DIA.		A	B	C	D	E	F	G	H	J	WRITE-ON AREA in (mm)	MIN. LOOP TENSILE lbs. (N)	CROSS SECTION	WEIGHT (g) lbs./100 pcs.
	MIN. in (mm)	MAX. in (mm)	in (mm)	in (mm)	in (mm)	in (mm)	in (mm)	in (mm)	in (mm)	in (mm)	in (mm)				
PLM1M	.18 (4.6)	.75 (19)	.035 (.9)	.098 (2.5)	.169 (4.3)	.154 (3.9)	.180 (4.6)	3.9 (99)	.98 (24.9)	.31 (7.9)	.03 (.8)	.26 x .95 (6.6 x 24.1)	18 (80)	MINIATURE	.11 (50)
PLM2M	.18 (4.6)	2.0 (51)	.035 (.9)	.098 (2.5)	.169 (4.3)	.154 (3.9)	.180 (4.6)	8.0 (203)	.98 (24.9)	.31 (7.9)	.03 (.8)	.26 x .95 (6.6 x 24.1)	18 (80)	MINIATURE	.17 (77)

NOTES:

*SEE CURRENT PRICE SHEET FOR PART NUMBER SUFFIX DESIGNATION FOR PACKAGE SIZE AND PART COLOR.
RECOGNIZED UNDER THE COMPONENT PROGRAM OF UNDERWRITERS LABORATORIES INC.

										DIMENSIONS IN PARENTHESIS ARE IN METRIC UNITS.					
										SS_5261.PRT					
										PANDUIT CORP. TINLEY PARK, ILLINOIS					
										PAN-TY® MARKER PLM SERIES					
										UNLESS OTHERWISE SPECIFIED, DIMENSIONAL TOLERANCES ARE: (.X) ± ---- (.XXX) ± .020 (.51) (.XX) ± .02 (.5) ANGLES ± ----	UNLESS OTHERWISE SPECIFIED, ALL DIMENSIONS ARE GIVEN IN INCHES, THIRD ANGLE PROJECTION.				
---	-----	---								CORRECTED MAX & MIN (mm) BUNDLE DIAMETERS	-----	---	DRAWN BY K.L	MAT'L:	SCALE NONE
5	2/12/03	JABO								CORRECTED PLM1M WEIGHT IN (g) TO (50)	26823	5	DATE 6/9/88	NYLON 6/6	DRAWING NO. SS-5261
REV	DATE	BY	CHK							DESCRIPTION	ECN	R	CUST	SUP	DWG SIZE A