



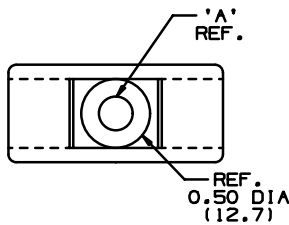
TMEH-S10-Q0



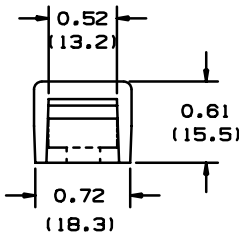
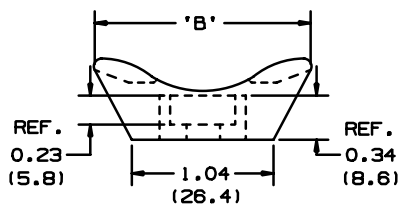
- Mounts designed specially for use with *PANDUIT* Extra-Heavy cross section ties for mounting cable, large wire bundles or tubular shapes.
- Unique cradle design provides maximum stability for cable bundle
- Route and support large diameter and heavy cable bundles
- ‡ Cable Tie Cross Section Sizes: M = Miniature, I = Intermediate, S = Standard, HS = Heavy-Standard, LH = Light-Heavy, H = Heavy, HLM = Miniature *Tak-Ty*® Hook & Loop Cable Ties.

▪ Part Number	TMEH-S10-Q0
▪ RoHS Compliancy Status	Compliant
▪ Part Description	Extra Heavy Cable Tie Mount
▪ Material	Weather Resistant Nylon 6.6
▪ Color	Black
▪ UL Recognized	E136577
▪ Height (In.)	.61
▪ Height (mm)	15.5
▪ Length (In.)	1.65
▪ Length (mm)	42.0
▪ Width (In.)	.74
▪ Width (mm)	19.0
▪ Environment	Outdoors
▪ Flammability Rating	UL94 V-2
▪ Hole Diameter (In.)	.20
▪ Hole Diameter (mm)	5.1
▪ Max. Bundle Diameter (mm)	12.7
▪ Mounting Method	#10 (M5) Screw
▪ Pricing Description	Cable Tie Mount, Extra-Heavy, #10 Screw (M5), Weather Resistant Nylon
▪ Screw Size	#10 (M5)
▪ Screw Size Metric	M5
▪ Used With Cable Ties	I, S, H, EH
▪ Min. Order UOM	PC
▪ Min. Order Qty.	25
▪ BOM Qty. (# of Pkgs.)	

THIS COPY IS PROVIDED ON A RESTRICTED BASIS AND IS NOT TO BE USED IN ANY WAY DETRIMENTAL TO THE INTERESTS OF PANDUIT CORP.



PANDUIT PART NUMBER*	*MATERIAL SUFFIX	'A' DIA.	'B'	MTG. SCREW	WEIGHT lbs/100 pcs (g)/100 pcs	USE WITH ANY OF THESE CABLE TIES
TMEH-S8	-0	0.18 (4.6)	1.62 (41.1)	#8 (M4)	1.04 (471.4)	I,S,H,EH
TMEH-S10	-0	0.20 (5.1)	1.62 (41.1)	#10 (M5)	1.03 (467.4)	I,S,H,EH
	-100 -109		1.65 (41.9)			
TMEH-S25	-0	0.28 (6.6)	1.62 (41.1)	1/4" (M6)	1.01 (458.0)	I,S,H,EH



*MATERIAL SUFFIX	MATERIAL
-0	WEATHER RESISTANT NYLON
-100 -109	WEATHER RESISTANT POLYPROPYLENE

- NOTES:
 1. SEE CURRENT PRICE SHEET FOR PART NUMBER SUFFIX DESIGNATION FOR PACKAGE SIZE.
 2. CABLE TIE CROSS SECTION CODE:
 I=INTERMEDIATE,S=STANDARD
 H=HEAVY DUTY,EH=EXTRA HEAVY.

DIMENSIONS IN BRACKETS ARE METRIC [mm]

000 FILES/LAYERS G00239EL_PB_TMEH_02

PANDUIT CORP. TINLEY PARK, ILLINOIS

TMEH-XX
TIE MOUNT

REV	DATE	BY	CHK	DESCRIPTION	ECN	R	CUST	SUP	DATE	MAT'L	SCALE	DWG NO.	DWG SIZE
2	10/28/03	MSAC		ADDED SEPERATE TMEH-S10 ROW FOR -100 AND -109 PARTS. 0.50 (12.7) DIA WAS .52 (13.2), 'B' WAS 1.65 (41.9) FOR -0 PARTS, 0.72 (18.3) WAS .74 (18.8) 1.04 (26.4) WAS 1.05 (26.7)	G80239EL	2							
1	7/24/01	LGG		ADDED REF & UPDATED	G80239EL	1			12/13/98	SEE TABLE	NONE	G80239EL	A
R	12/13/98	AJV		INITIAL RELEASE	G80239EL	R							

UNLESS OTHERWISE SPECIFIED, DIMENSIONAL TOLERANCES ARE:
 (.X) ±0.05 (1.3) (.XX) ±0.010 (0.25)
 (.XX) ±0.02 (0.5) ANGLES ±5°

UNLESS OTHERWISE SPECIFIED, ALL DIMENSIONS ARE GIVEN IN INCHES, THIRD ANGLE PROJECTION.

DRAWN BY AJV

MAT'L:

SCALE NONE

DATE 12/13/98

SEE TABLE

DRAWING NO.

G80239EL

DWG

A

SIZE