



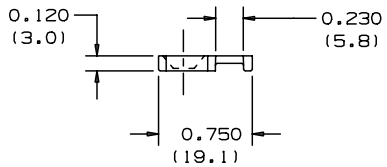
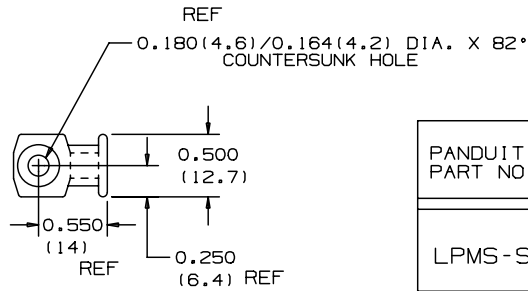
LPMS-S8-C



- Small overall size allows use where space is limited
- Install with a screw or rivet for a strong, secure installation
- Low profile design keeps bundle close to mounting surface where overhead space is limited
- ‡ Cable Tie Cross Section Sizes: M = Miniature, I = Intermediate, S = Standard, HS = Heavy-Standard, LH = Light-Heavy, H = Heavy, HLM = Miniature *Tak-Ty*® Hook & Loop Ties.

| | |
|-----------------------------|---|
| ▪ Part Number | LPMS-S8-C |
| ▪ RoHS Compliancy Status | Compliant |
| ▪ Part Description | Low Profile Cable Tie Mount |
| ▪ Product Type | Cable Tie Mounts - Screw / Rivet Mounted |
| ▪ Material | Nylon 6.6 |
| ▪ Color | Natural |
| ▪ UL Recognized | E136577 |
| ▪ Height (In.) | .12 |
| ▪ Height (mm) | 3.0 |
| ▪ Length (In.) | .75 |
| ▪ Length (mm) | 19.1 |
| ▪ Width (In.) | .50 |
| ▪ Width (mm) | 12.7 |
| ▪ CE Compliant | CT-ACC4 / 10.96 |
| ▪ Environment | Indoors |
| ▪ Flammability Rating | UL94 V-2 |
| ▪ Hole Diameter (In.) | .180 |
| ▪ Hole Diameter (mm) | 4.6 |
| ▪ Max. Bundle Diameter (mm) | 4.8 |
| ▪ Mounting Method | #8 (M4) Countersunk Screw |
| ▪ Pricing Description | Cable Tie Mount, Low Profile, #8 Screw (M4) |
| ▪ Screw Size | #8 (M4) |
| ▪ Screw Size Metric | M4 |
| ▪ Used With Cable Ties | M, I, S |
| ▪ Min. Order UOM | PC |
| ▪ Min. Order Qty. | 100 |

THIS COPY IS PROVIDED ON A RESTRICTED BASIS AND IS NOT TO BE USED IN ANY WAY DETRIMENTAL TO THE INTERESTS OF PANDUIT CORP.



NOTES:

*1) SEE CURRENT PRICE SHEET FOR PART NUMBER SUFFIX DESIGNATION FOR PACKAGE SIZE AND COLOR.

| PANDUIT * PART NO. | USE WITH ANY OF THESE CABLE TIE CROSS-SECTIONS | WEIGHT lbs/100pcs. (g) | SCREW SIZE |
|-----------------------|--|------------------------------|---------------|
| LPMS-S8 | MINIATURE INTERMEDIATE STANDARD | 0.102 (46.3) | #8 (M4) |

DIMENSIONS IN PARENTHESES ARE IN METRIC UNITS.

CAD FILENAME/LAYERS

© G00239HG_P1_LPMS_00

PANDUIT

CORP. TINLEY PARK, ILLINOIS

LOW PROFILE MOUNT LPMS-S8

UNLESS OTHERWISE SPECIFIED,
DIMENSIONAL TOLERANCES ARE:
(.X) ± ----- (.XXX) ± .020 (.5)
(.XX) ± ----- ANGLES ± -----

UNLESS OTHERWISE SPECIFIED,
ALL DIMENSIONS ARE GIVEN
IN INCHES, THIRD ANGLE PROJECTION.

DRAWN BY
LGG

MAT'L:

SCALE
NONE

DATE
6-06-01

NYLON 6/6

DRAWING NO.
GB0239HG

DWG
A
SIZE

| REV | DATE | BY | CHK | DESCRIPTION | ECN | R | CUST | SUP |
|-----|--------|-----|-----|--|----------|---|------|-----|
| R | 6-6-01 | LGG | | REVISED DRAWING FROM SS-5783-A-RV 3 TO NEW DRAWING NUMBER | GB0239HG | R | | |