



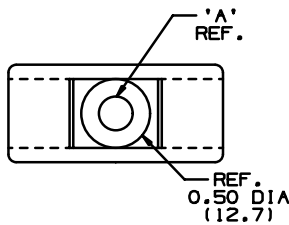
TMEH-S8-Q0



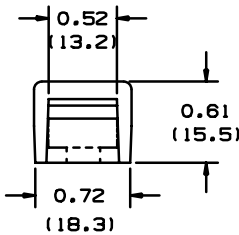
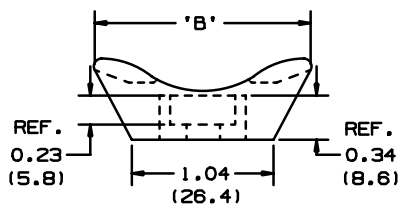
- Mounts designed specially for use with *PANDUIT* Extra-Heavy cross section ties for mounting cable, large wire bundles or tubular shapes.
- • Unique cradle design provides maximum stability for cable bundle
- • Route and support large diameter and heavy cable bundles
- ‡ Cable Tie Cross Section Sizes: M = Miniature, I = Intermediate, S = Standard, HS = Heavy-Standard, LH = Light-Heavy, H = Heavy, HLM = Miniature *Tak-Ty*® Hook & Loop Cable Ties.

| | |
|-----------------------------|--|
| ▪ Part Number | TMEH-S8-Q0 |
| ▪ RoHS Compliancy Status | Compliant |
| ▪ Part Description | Extra Heavy Cable Tie Mount |
| ▪ Material | Weather Resistant Nylon 6.6 |
| ▪ Color | Black |
| ▪ UL Recognized | E136577 |
| ▪ Height (In.) | .61 |
| ▪ Height (mm) | 15.5 |
| ▪ Length (In.) | 1.62 |
| ▪ Length (mm) | 42.0 |
| ▪ Width (In.) | .72 |
| ▪ Width (mm) | 19.0 |
| ▪ Environment | Outdoors |
| ▪ Flammability Rating | UL94 V-2 |
| ▪ Hole Diameter (In.) | .18 |
| ▪ Hole Diameter (mm) | 4.3 |
| ▪ Max. Bundle Diameter (mm) | 12.7 |
| ▪ Mounting Method | #8 (M4) Screw |
| ▪ Pricing Description | Cable Tie Mount, Extra-Heavy, #8 Screw (M4), Weather Resistant Nylon |
| ▪ Screw Size | #8 (M4) |
| ▪ Screw Size Metric | M4 |
| ▪ Used With Cable Ties | I, S, H, EH |
| ▪ Min. Order UOM | PC |
| ▪ Min. Order Qty. | 25 |
| ▪ BOM Qty. (# of Pkgs.) | |

THIS COPY IS PROVIDED ON A RESTRICTED BASIS AND IS NOT TO BE USED IN ANY WAY DETRIMENTAL TO THE INTERESTS OF PANDUIT CORP.



| PANDUIT PART NUMBER* | *MATERIAL SUFFIX | 'A' DIA. | 'B' | MTG. SCREW | WEIGHT lbs/100 pcs (g)/100 pcs | USE WITH ANY OF THESE CABLE TIES |
|----------------------|------------------|------------|-------------|------------|--------------------------------|----------------------------------|
| TMEH-S8 | -0 | 0.18 (4.6) | 1.62 (41.1) | #8 (M4) | 1.04 (471.4) | I,S,H,EH |
| TMEH-S10 | -0 | 0.20 (5.1) | 1.62 (41.1) | #10 (M5) | 1.03 (467.4) | I,S,H,EH |
| | -100 -109 | | 1.65 (41.9) | | | |
| TMEH-S25 | -0 | 0.28 (6.6) | 1.62 (41.1) | 1/4" (M6) | 1.01 (458.0) | I,S,H,EH |



| *MATERIAL SUFFIX | MATERIAL |
|------------------|--|
| -0 | WEATHER RESISTANT NYLON |
| -100 -109 | WEATHER RESISTANT POLYPROPYLENE POLYPROPYLENE |

- NOTES:
 1. SEE CURRENT PRICE SHEET FOR PART NUMBER SUFFIX DESIGNATION FOR PACKAGE SIZE.
 2. CABLE TIE CROSS SECTION CODE:
 I=INTERMEDIATE,S=STANDARD
 H=HEAVY DUTY,EH=EXTRA HEAVY.

DIMENSIONS IN BRACKETS ARE METRIC [mm]

000 FILES/LAYERS G00239EL_PB_TMEH_02

PANDUIT CORP.

TINLEY PARK, ILLINOIS

TMEH-XX
TIE MOUNT

| REV | DATE | BY | CHK | DESCRIPTION | ECN | R | CUST | SUP | DATE | DRW'G | MAT'L'S | SCALE | DWG NO. | DWG SIZE |
|-----|----------|------|-----|---|----------|---|------|-----|------|----------|-----------|-------|----------|----------|
| 2 | 10/28/03 | MSAC | | ADDED SEPERATE TMEH-S10 ROW FOR -100 AND -109 PARTS. 0.50 (12.7) DIA WAS .52 (13.2), 'B' WAS 1.65 (41.9) FOR -0 PARTS, 0.72 (18.3) WAS .74 (18.8) 1.04 (26.4) WAS 1.05 (26.7) | G80239EL | 2 | | | | | | | | |
| 1 | 7/24/01 | LGG | | ADDED REF & UPDATED | G80239EL | 1 | | | | 12/13/98 | SEE TABLE | NONE | G80239EL | A |
| R | 12/13/98 | AJV | | INITIAL RELEASE | G80239EL | R | | | | | | | | |
| | | | | | | | | | | | | | | |

UNLESS OTHERWISE SPECIFIED, DIMENSIONAL TOLERANCES ARE:
 (.X) ±0.05 (1.3) (.XX) ±0.010 (0.25)
 (.XX) ±0.02 (0.5) ANGLES ±5°

UNLESS OTHERWISE SPECIFIED, ALL DIMENSIONS ARE GIVEN IN INCHES, THIRD ANGLE PROJECTION.

DRAWN BY AJV

MAT'L'S

SCALE NONE

DATE 12/13/98

SEE TABLE

DWG NO.

G80239EL

DWG

A

SIZE